

VOLVO Diagnostic Software User Guide

CONTENT

1. Usage Brief	1
1.1 About Software	1
1.2 Application Range	1
1.3 Attention	1
2. Instructions	1
2.1 Menu Selection	1
2.1.1 Automatically Read VIN	2
2.1.2 Manually Input VIN	4
2.1.3 Manually Select Car Model	5

LAUNCH

1. Usage Brief

1.1 About Software

VOLVO Diagnostic Software diagnoses VOLVO Car Model Version Information, DTC, Data Stream, Actuation Test and Special Functions.

1.2 Application Range

This document is applicable for VOLVO diagnostic software developing engineer, technical engineer and customer.

1.3 Attention

With the developing of VOLVO software, this document may vary. If any problem found during the usage, please feedback to VOLVO diagnostic software developing engineer.

2. Instructions

2.1 Menu Selection

Download the latest VOLVO diagnostic software from <http://www.x431.com/> or <http://mycar.dbscar.com/>. After accessing the software, the main interface is as shown in below Figure 1. It includes "Automatically Read VIN", "Manually Input VIN" and "Select Car Model". Following are the details.



Figure 1

2.1.1 Automatically Read VIN

1). Select "Automatically Read VIN" to scan VIN, see Figure 2.



Figure 2

2). After scanning, it displays the basic car model information and prompts whether to carry out fast system scan. See Figure 3.

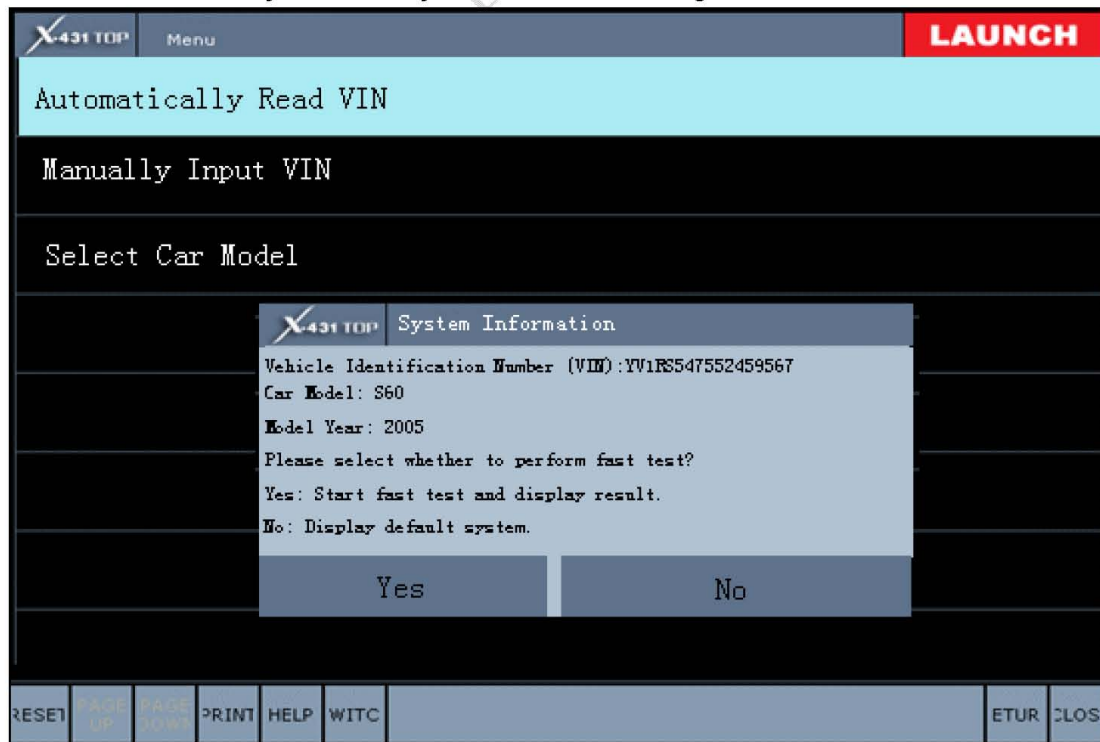


Figure 3

- 3). Select YES to perform the fast system scan. After scanning, it lists the existing systems and DTCs. See Figure 4.

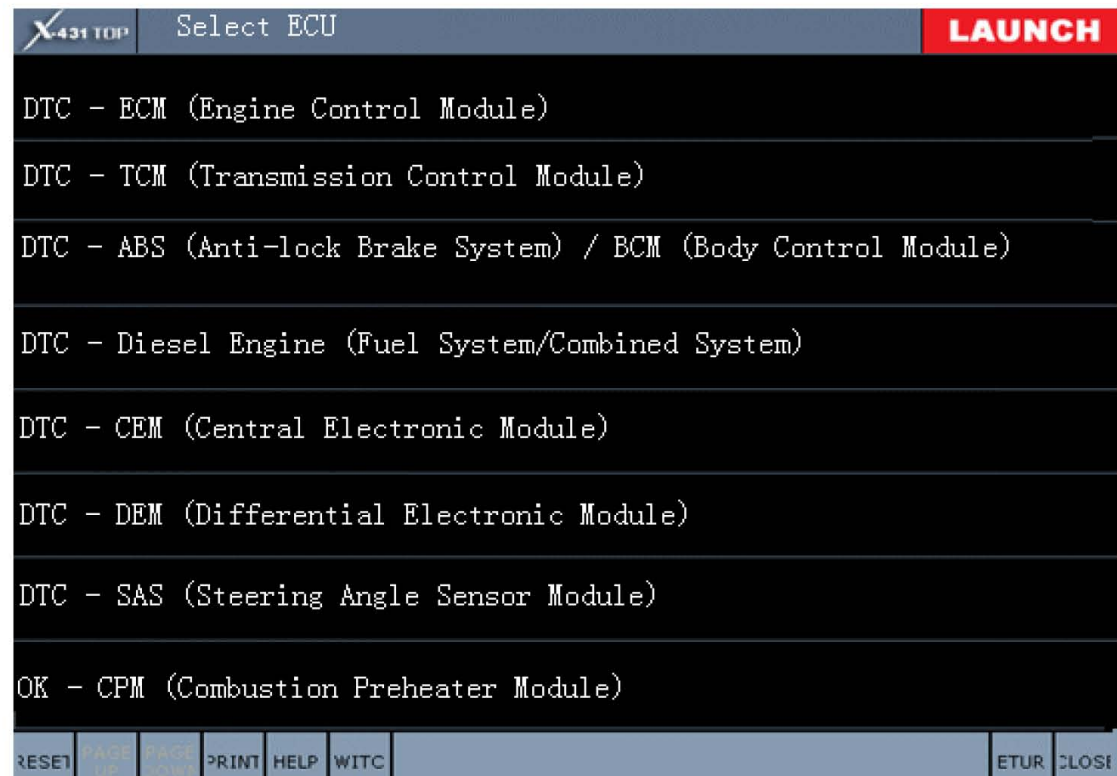


Figure 4

- 4). Select NO to enter default system menu. See Figure 5.

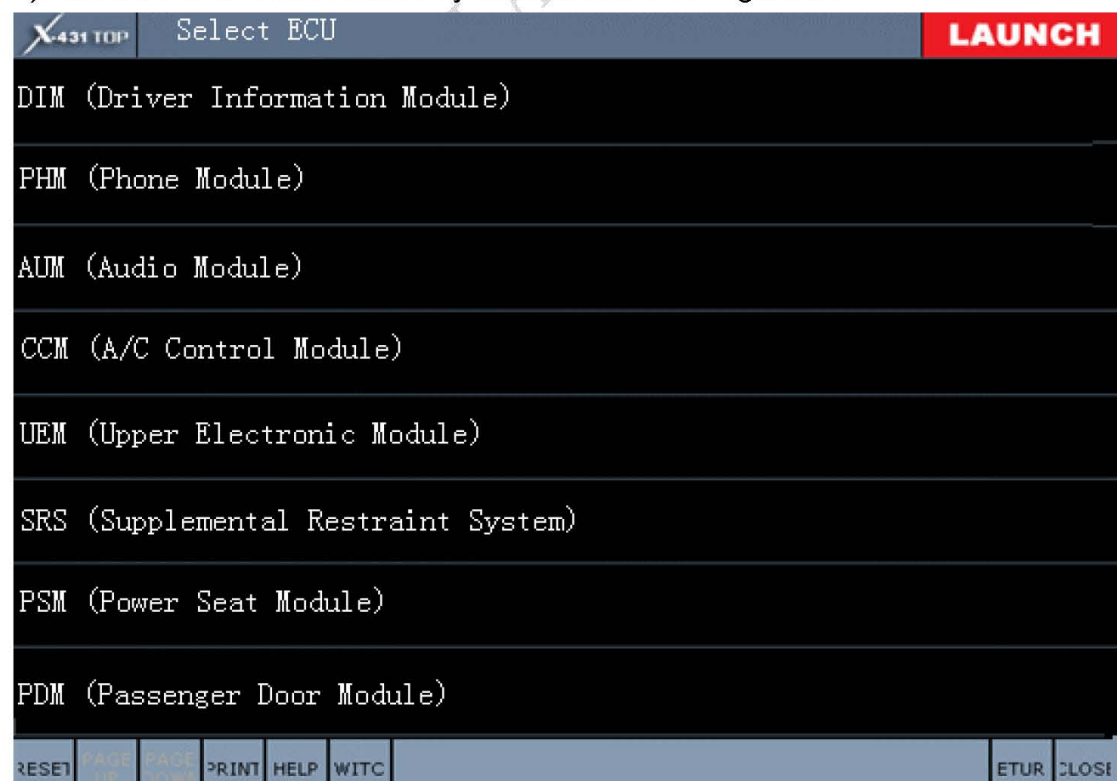


Figure 5

- 5). Select the scanned system or default system to enter the detailed function menu, including Version Information, DTC, Data Stream, Actuation Test and Special Functions. See Figure 6.



Figure 6

2.1.2 Manually Input VIN

- 1). Select "Manually Input VIN", it prompts the VIN Box. Manually enter the VIN of the car being tested. See Figure 7.

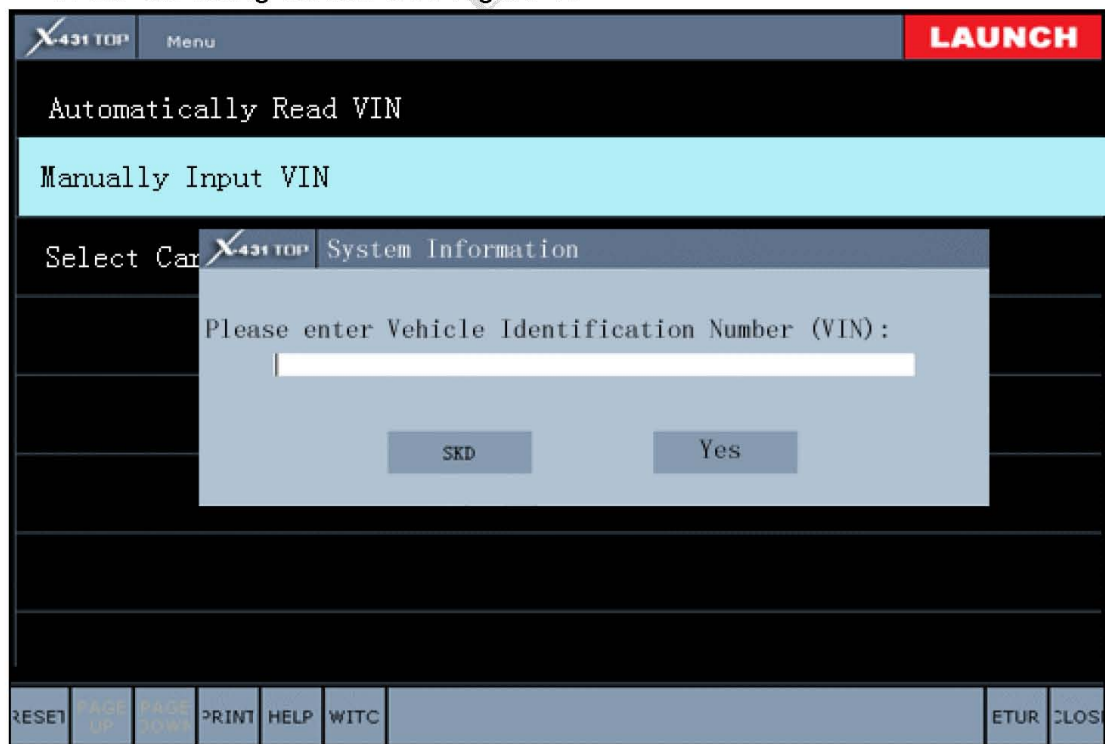


Figure 7

- 2). After entering VIN, select OK, it then displays the basic car model information and prompts whether to carry out fast scan. Next steps are the same as those of Automatically Read VIN.

2.1.3 Manually Select Car Model

- 1). Select primary menu "Select Car Model" to enter car model list. See Figure 8.



Figure 8

- 2). Number in the bracket shows the year. For example, S80 (-06), it means S80 in and before year of 2006. S80 (07-) means S80 in and after year of 2007. Select corresponding car model to enter model year menu. See Figure 9.

X431 TOP		Menu				LAUNCH	
Vehicle Identification Number (VIN)							
2007							
2008							
2009							
2010							
RESET	PAGE UP	PAGE DOWN	PRINT	HELP	WITC		
						ETUR	CLO

Figure 9

3). Select corresponding model year to enter system menu. See Figure 10.

X431 TOP		Menu				LAUNCH	
Fast Test							
General Service							
ECM (Gasoline Engine)							
DIESEL ENG (Diesel Engine)							
TCM (Automatic Transmission)							
ABS/BCM (Anti-lock Brake)							
SRS (Supplemental Restraint System)							
CEM (Central Electronic Module)							
RESET	PAGE UP	PAGE DOWN	PRINT	HELP	WITC		
						ETUR	CLO

Figure 10

- 4). System menu includes "Fast Test", "General Service" and different systems contained in the car model. Select "Fast Test" to perform a fast scan for every system. After scanning, it lists the system being scanned and the DTC status. This part of function is the same as that fast scan after scanning VIN. Select "General Service", it will list the common special functions of Service Light Reset, etc. See Figure 11. Select the system to enter detailed diagnostic functions. See Figure 12.



Figure 11



Figure 12