

# Operation Method for the Reset of the Detection of Water in Fuel of 2013 Land Rover New Freelander 2

Product model	Date	Number
X-431 series	20160505	—

## Actual Measured Vehicle Model:

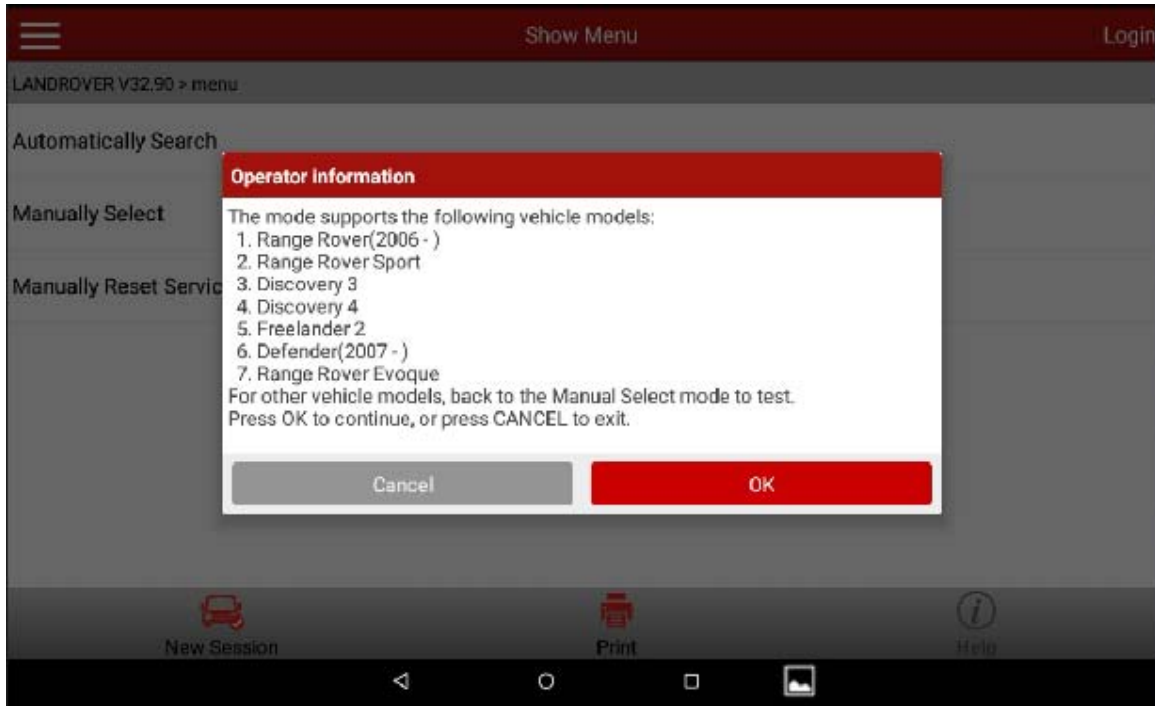
- Land Rover Freelander 2 Diesel, 2013, VIN=SALFA2BD7EH3\*\*\*\*\*.
- The engine MIL is on; sometimes, the engine is hard to ignite, which shall go to the workshop to repair. After replaced the diesel lattice and drained the water, carry out the reset of the detection of water in fuel.

## Operation method:

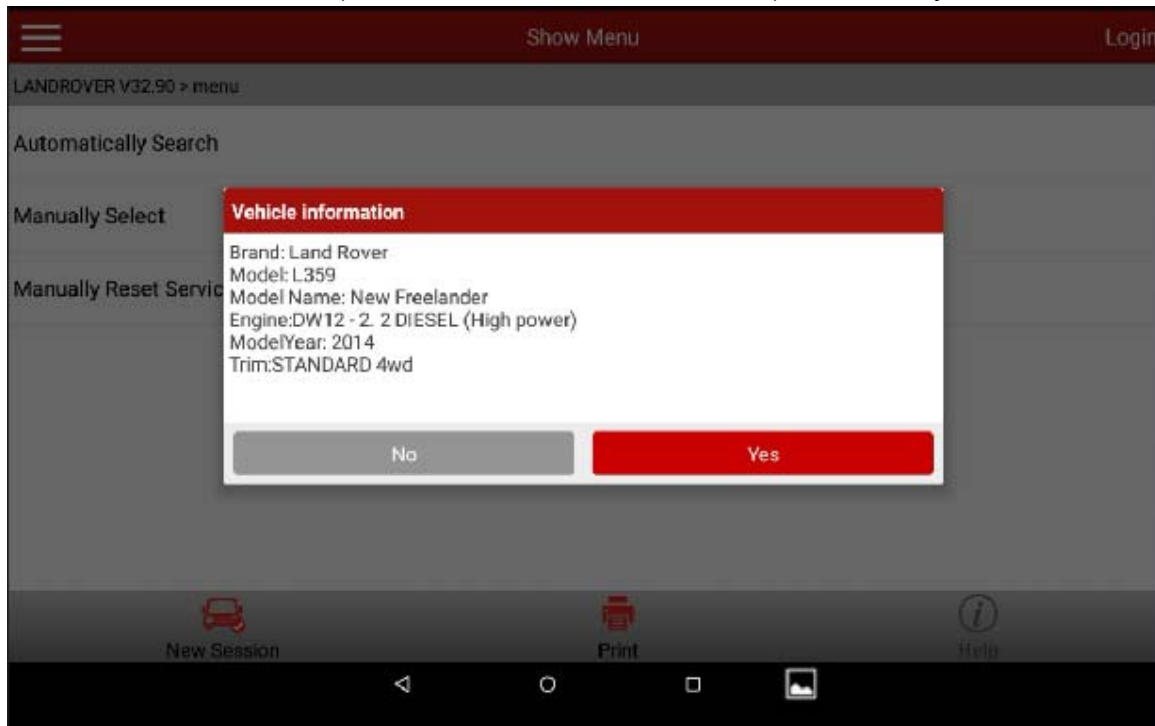
- 1). Select Land Rover V32.82 or above;

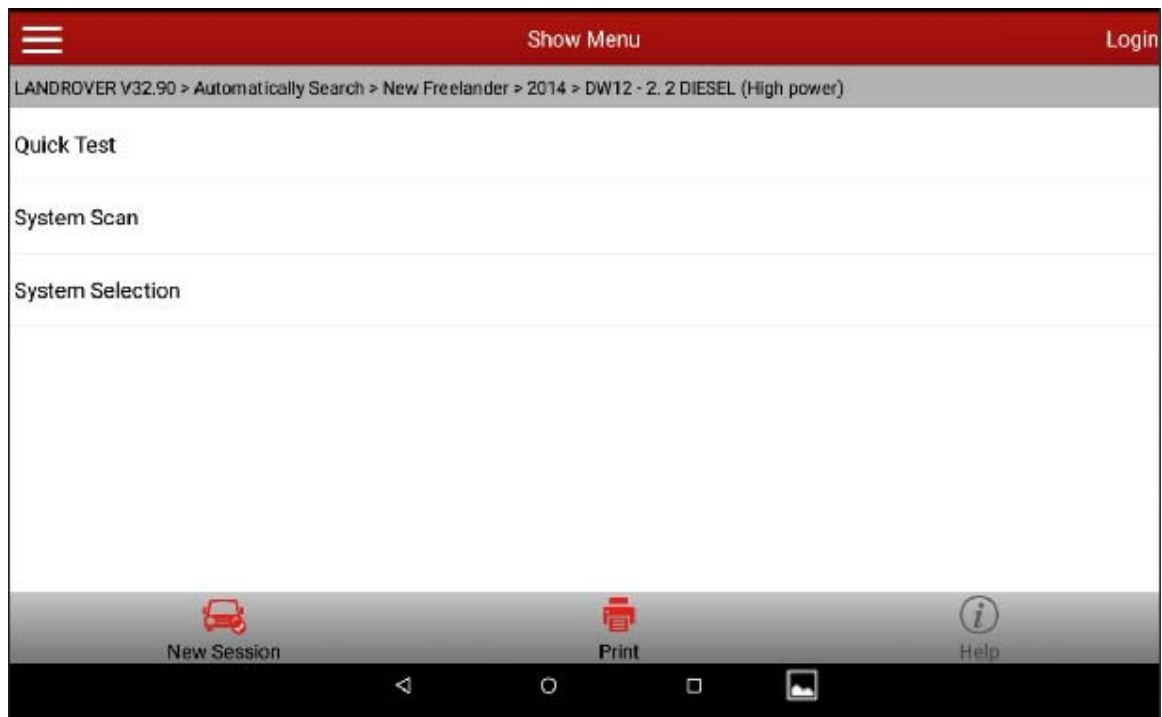


2). It indicates the operator info. Confirm the vehicle model is correct;

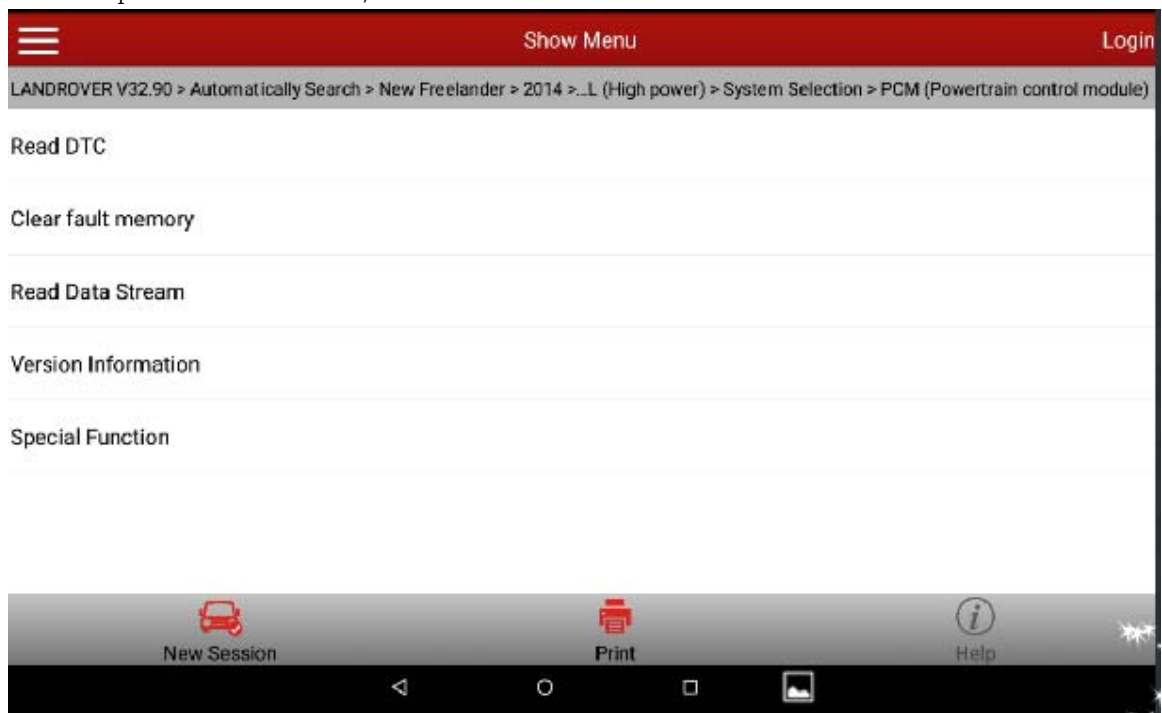


3). Check the vehicle info, and click Yes to continue, select system selection

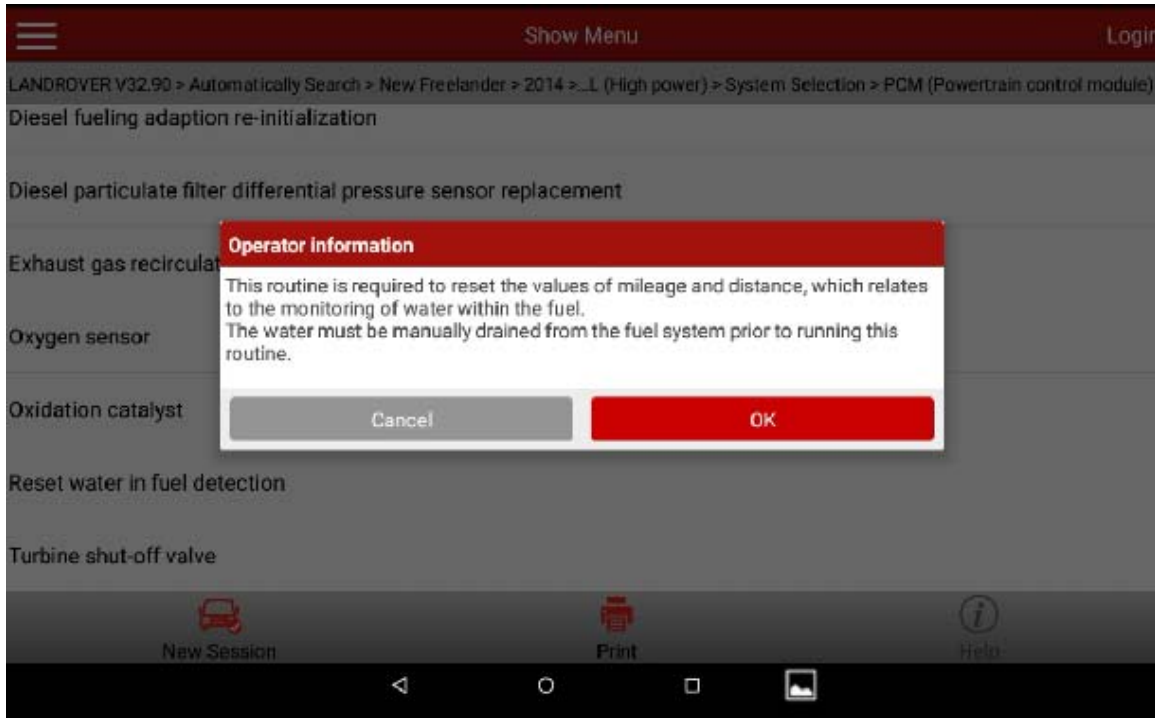




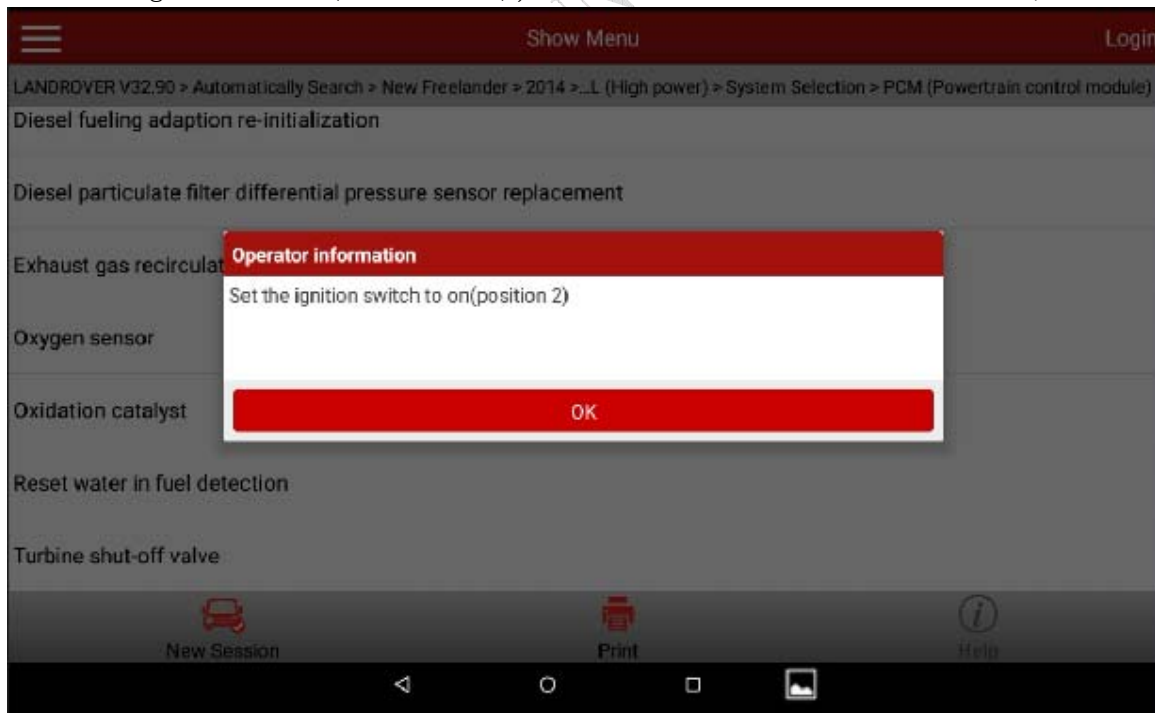
4). Select Special Function;



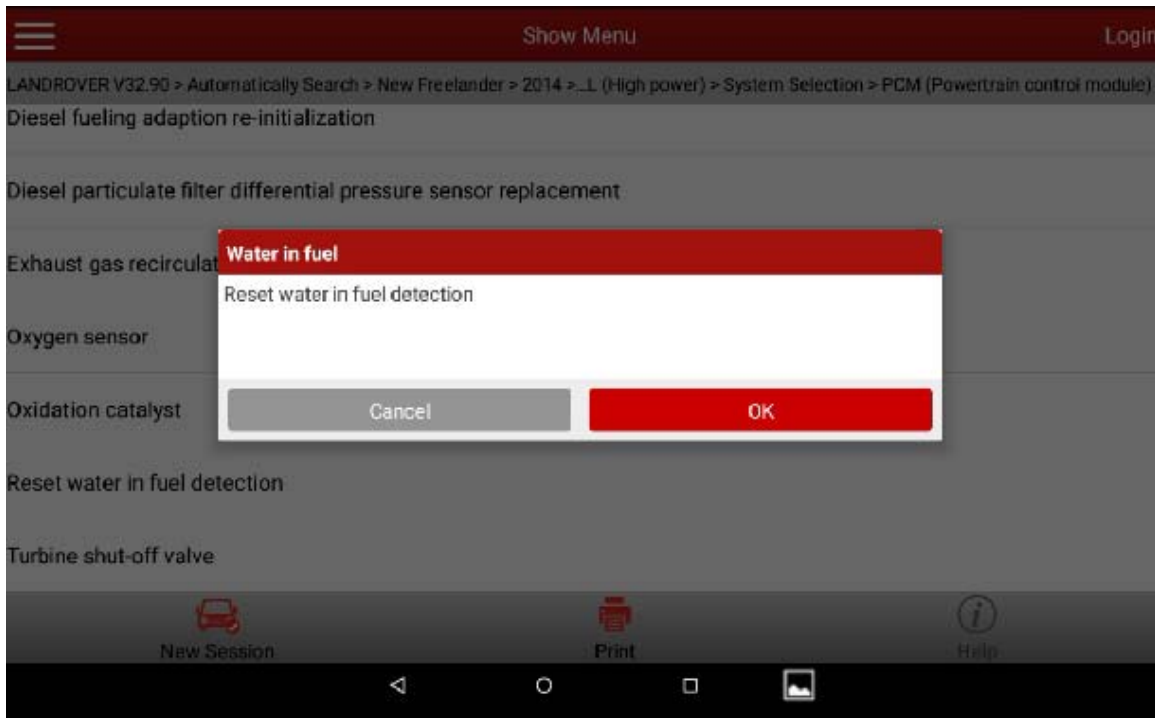
- 5). Select "Reset of the Detection of Water in Fuel". This procedure is required after drained the water to reset the mileage and the distance, which is related to the monitoring of water in fuel. The water must be drained manually from the fuel system before this normal procedure runs. Then click Confirm to continue;



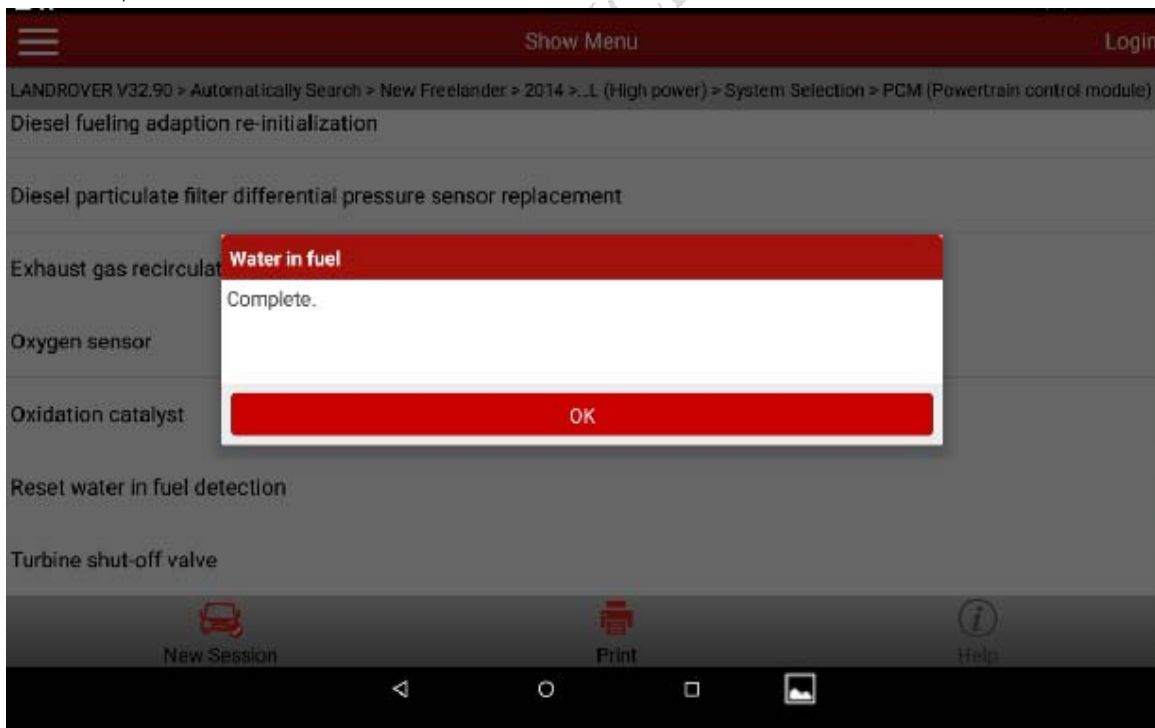
- 6). Turn the ignition on (Position 2), then click Confirm to continue;



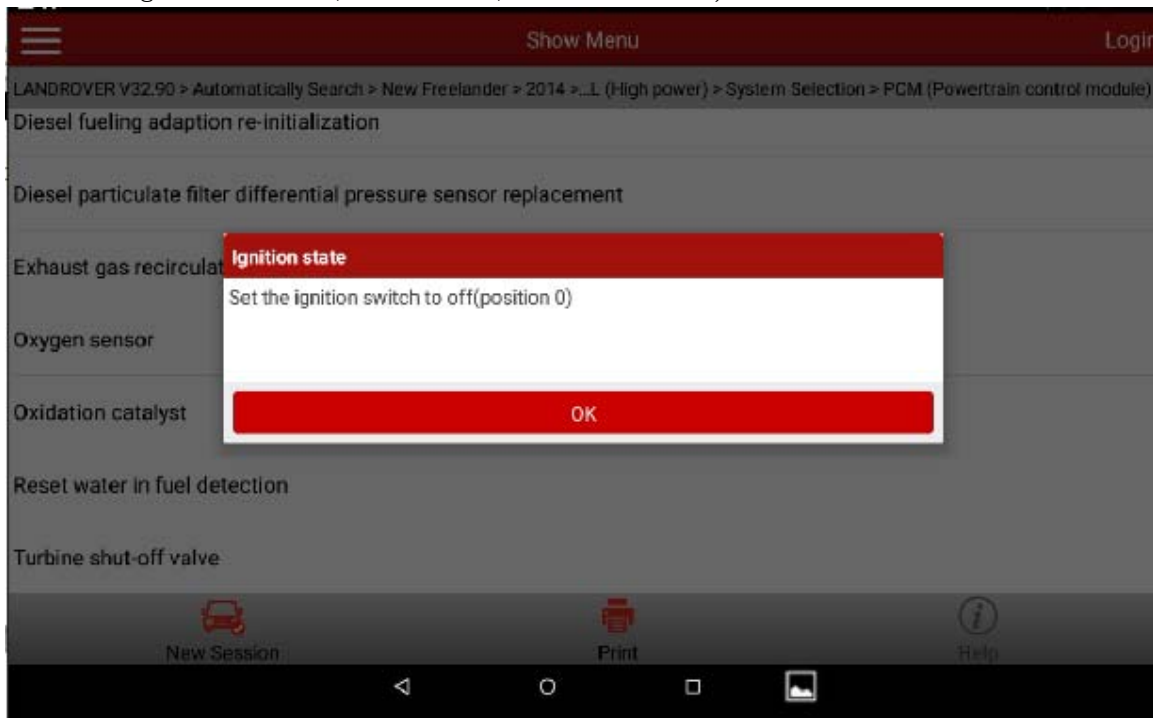
- 7). This procedure is the "Reset of the Detection of Water in Fuel", then click Confirm to continue;



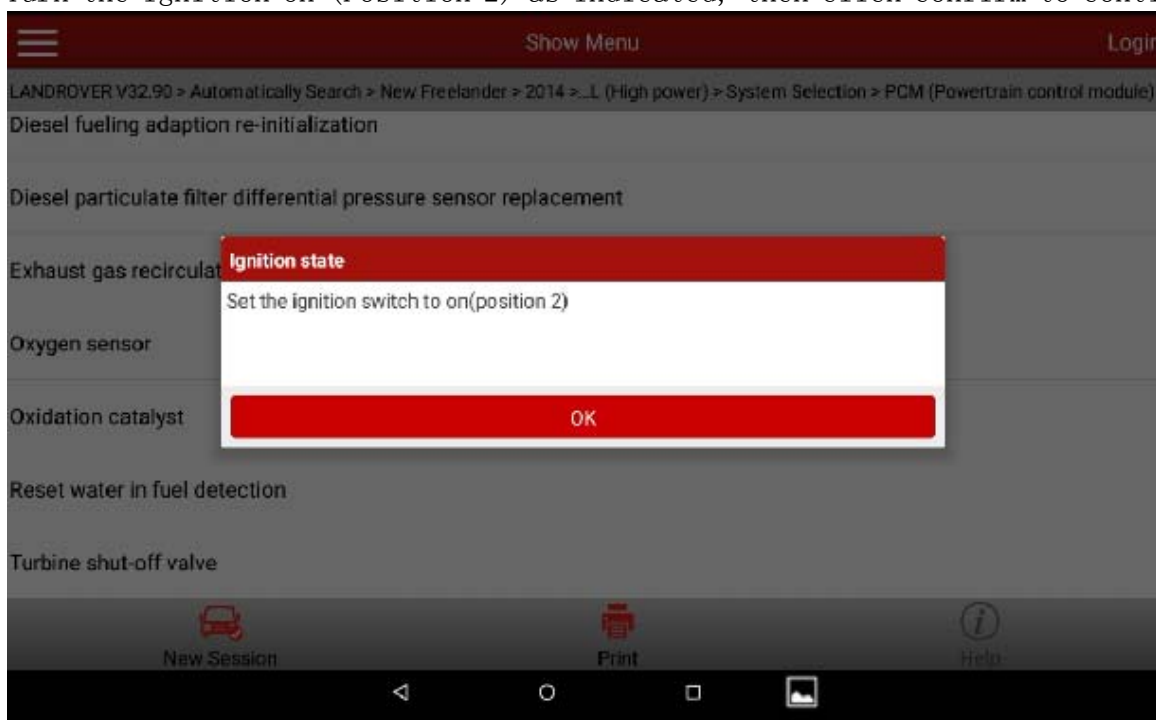
- 8). The Reset of the Detection of Water in Fuel is completed, then click Confirm to continue;



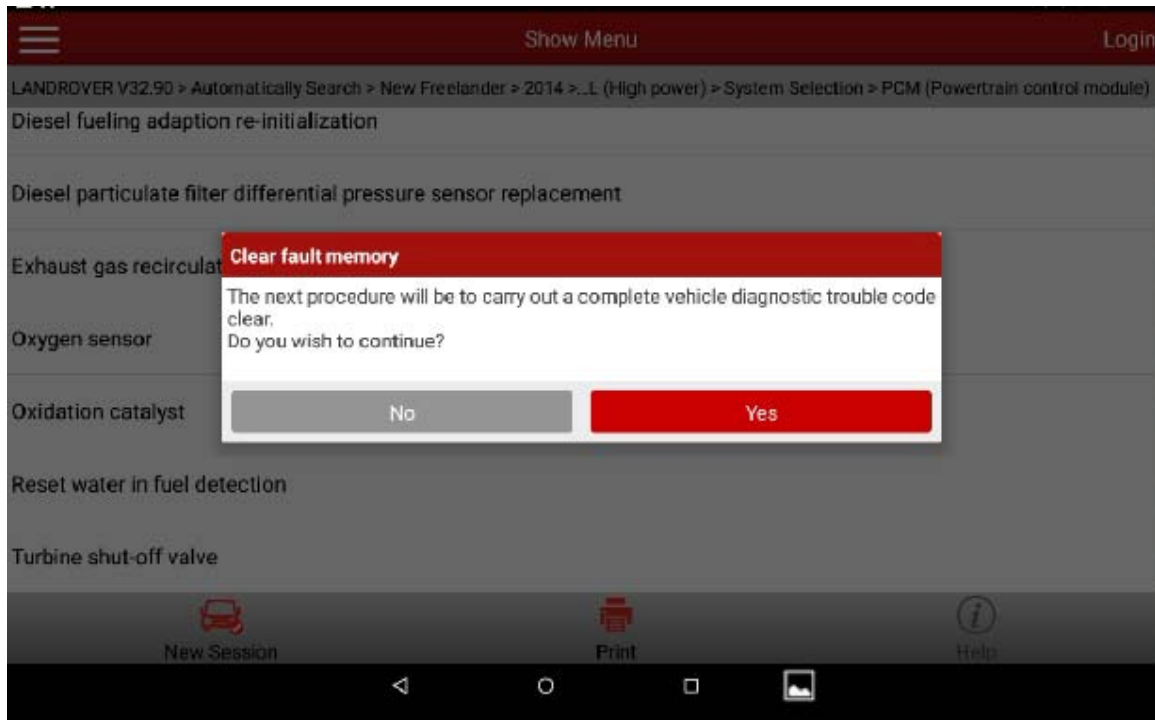
9). Turn the ignition off (Position 0) as indicated, then click Confirm to continue;



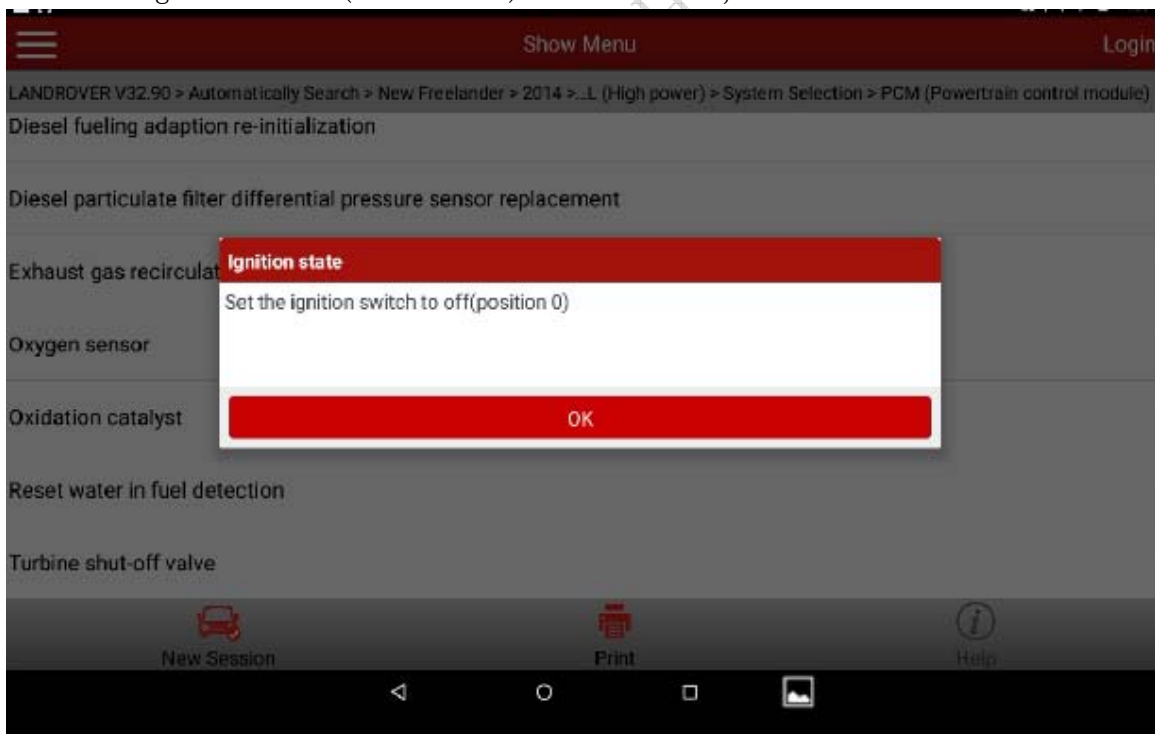
10). Turn the ignition on (Position 2) as indicated, then click Confirm to continue;



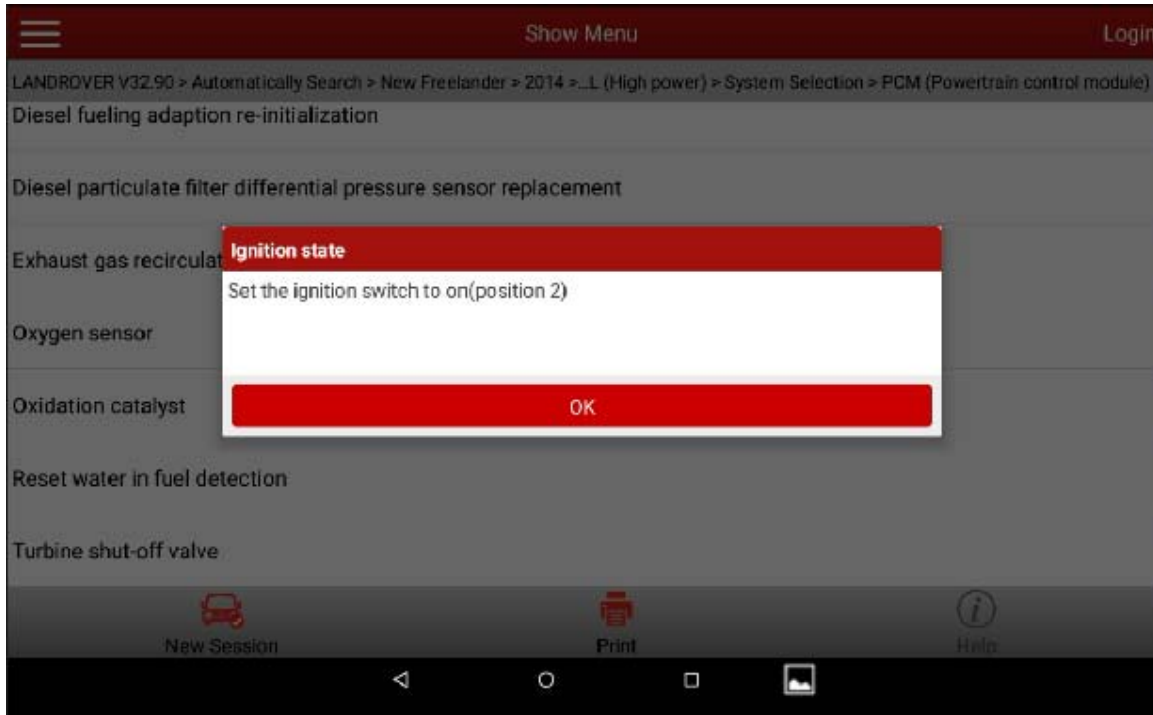
- 11). It indicates to clear all DTCs of the vehicle in the next step. Continue? Click Yes to continue;



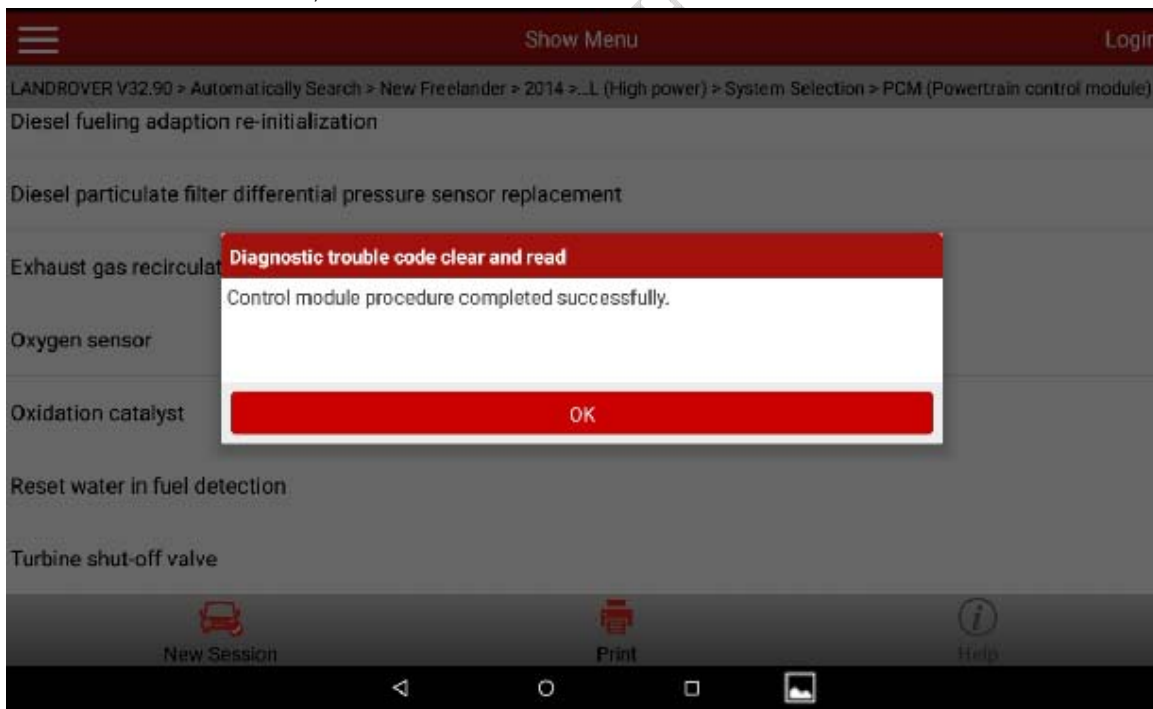
- 12). Turn the ignition off (Position 0) as indicated, then click Confirm to continue;



- 13). Turn the ignition on (Position 2) as indicated, then click Confirm to continue;

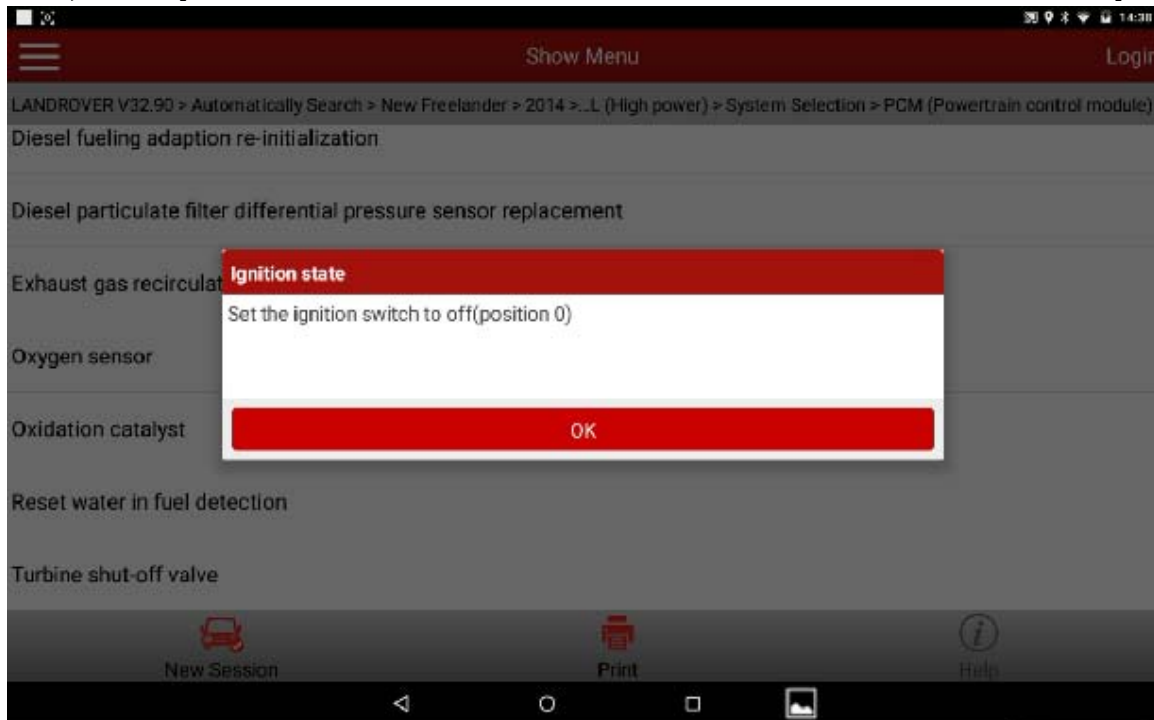


- 14). It indicates "Control module procedure successfully completed", then click Confirm to continue;





- 15). Turn the ignition off (Position 0) as indicated, and then click Confirm; At this time, the special function Reset of the Detection of Water in Fuel completed.



LAUNCH is dedicated to pursuing good functions and addressing customer needs. Follow LAUNCH, you will "make a little progress every day"!

