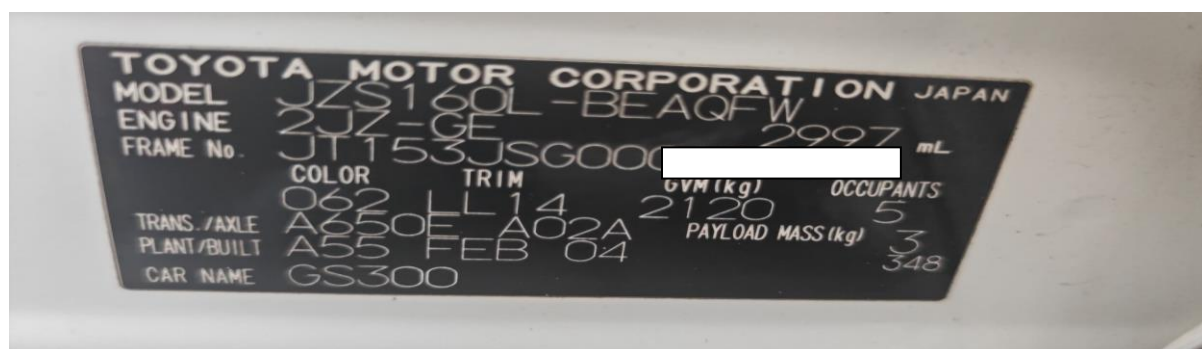


Lexus GS300 Deceleration Sensor Zero Calibration

Function description: On the ABS system of Lexus GS300, there is a DTC: C1336 zero calibration of deceleration sensor undone. The "Test Mode" special function needs to be performed.

Supported products: Launch PRO or PAD series comprehensive diagnostic equipment

Tested model: 2000 Lexus GS300, VIN: JT153JSG000***** (see the following figure)



The instrument "VSC" and "ABS" MILs flash. See the following figure.



Procedure:

1. On the ABS system, there is a DTC: C1336 zero calibration of deceleration sensor undone. (See the following figure.)

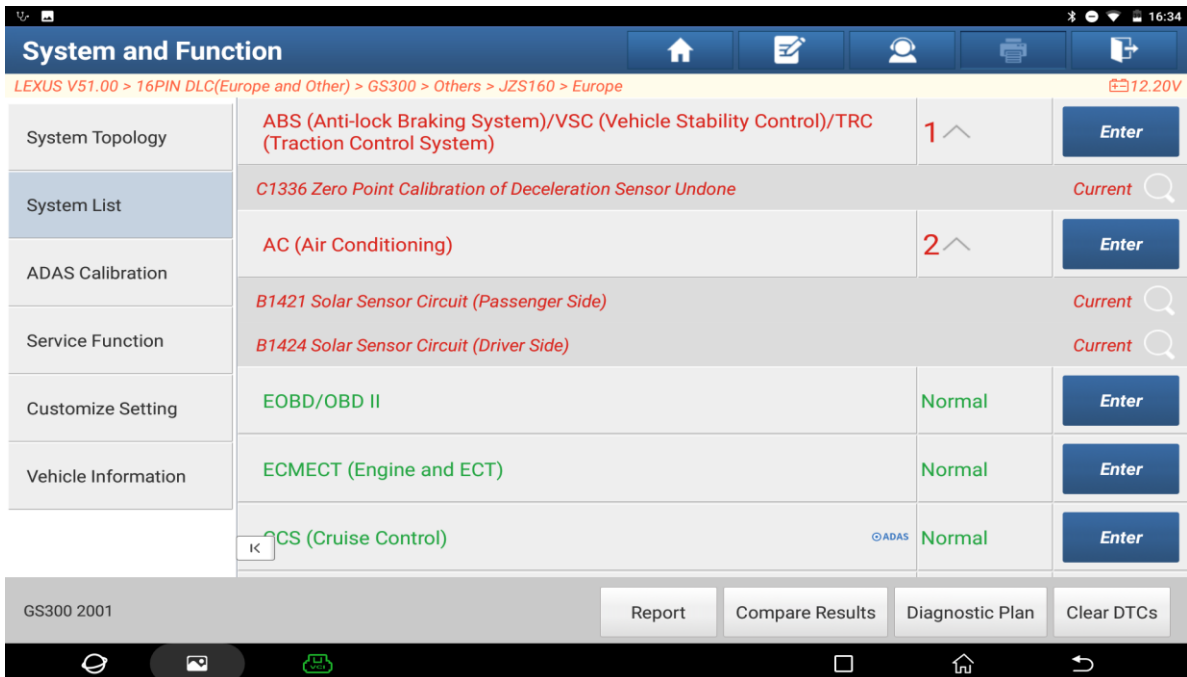


Figure 1

2. Choose [Special Function]. (See the following figure.)

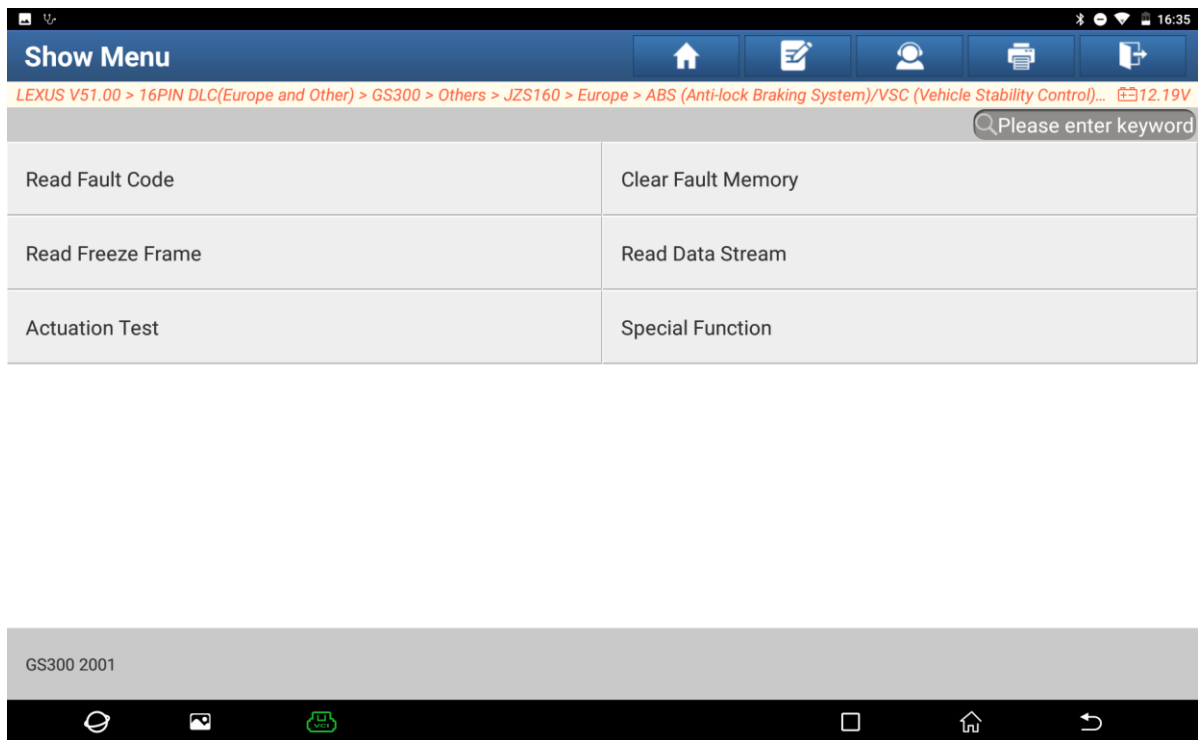


Figure 2

3. Choose [Test Mode]. (See the following figure.)

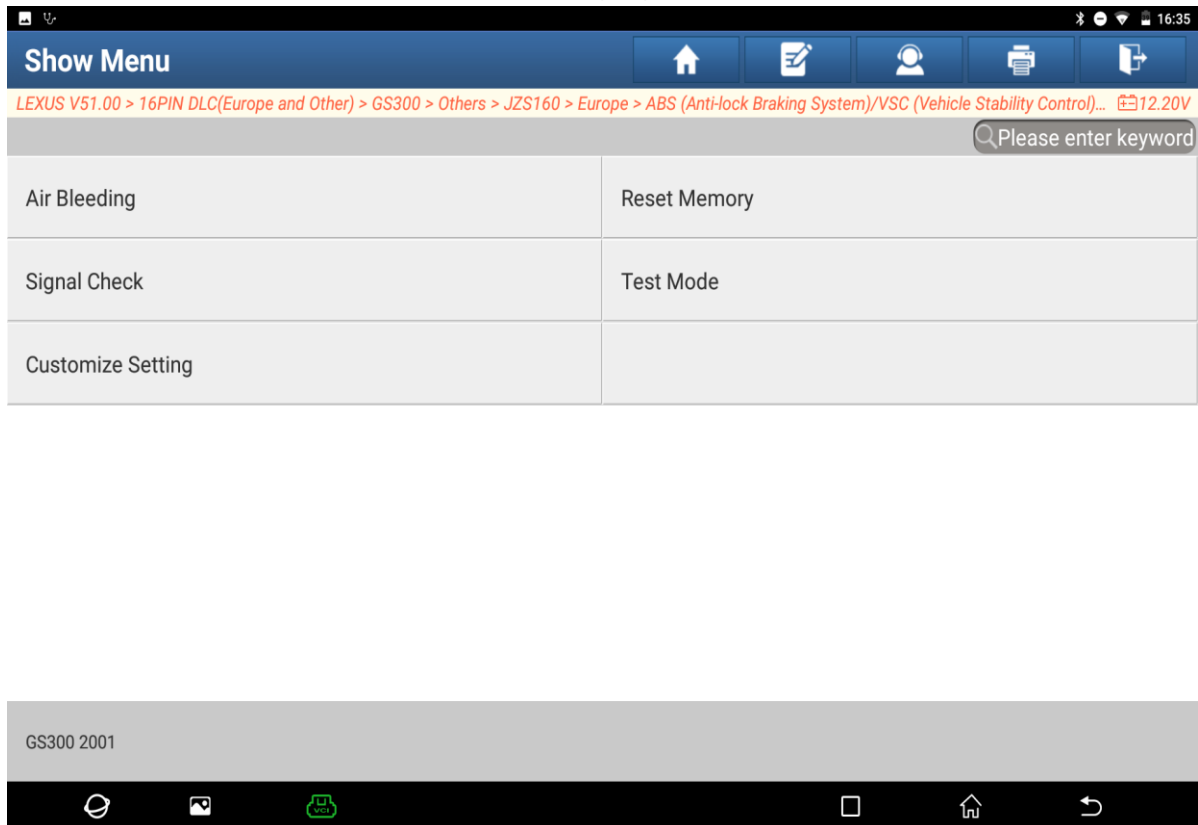


Figure 3

4. Use this function after replacing the skid control ECU or G & yaw rate sensor. Click OK. (See the following figure.) Click OK. (See the following figure.)

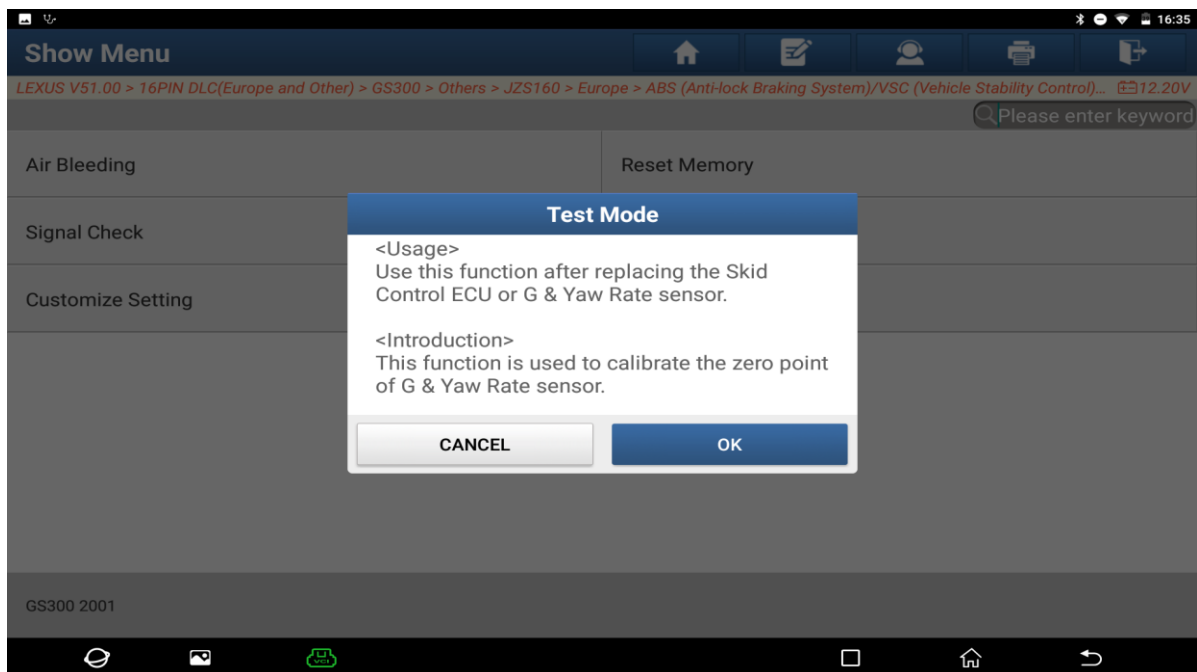


Figure 4

5. Confirm that the conditions are met. Click OK. (See the following figure.)

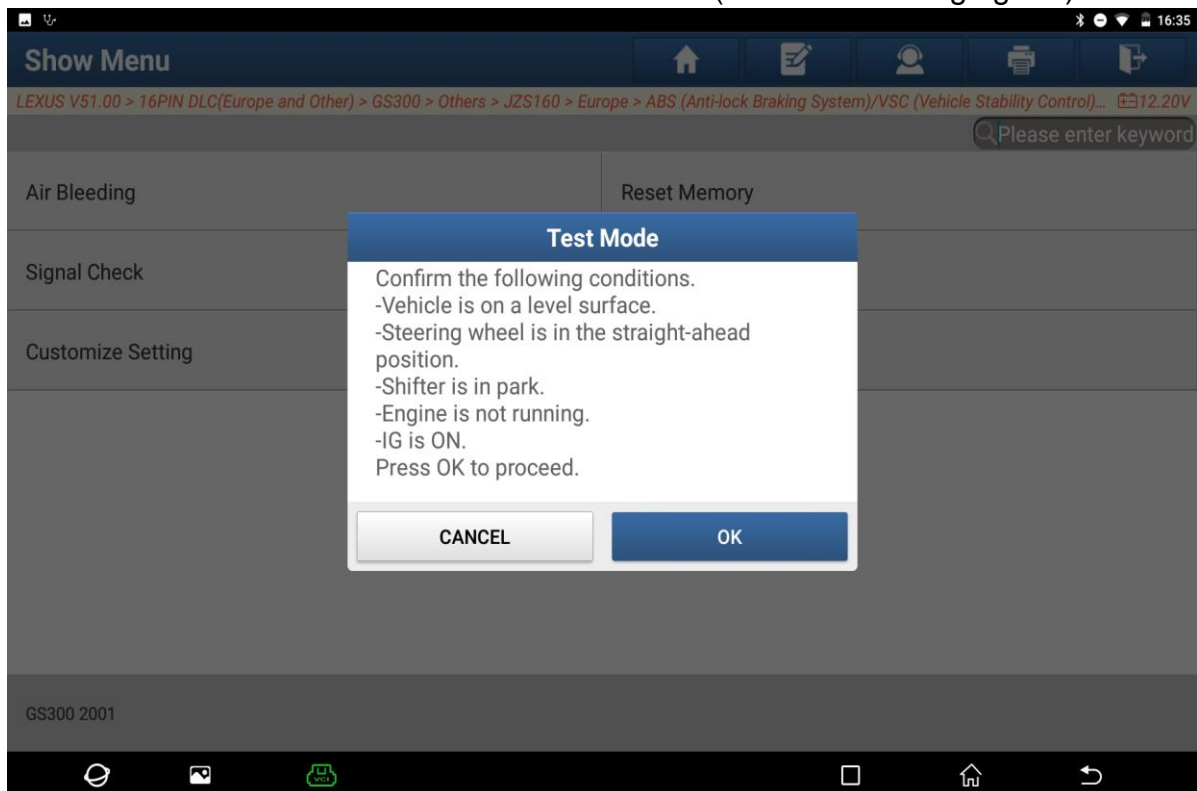


Figure 5

6. Please wait. (See the following figure.)

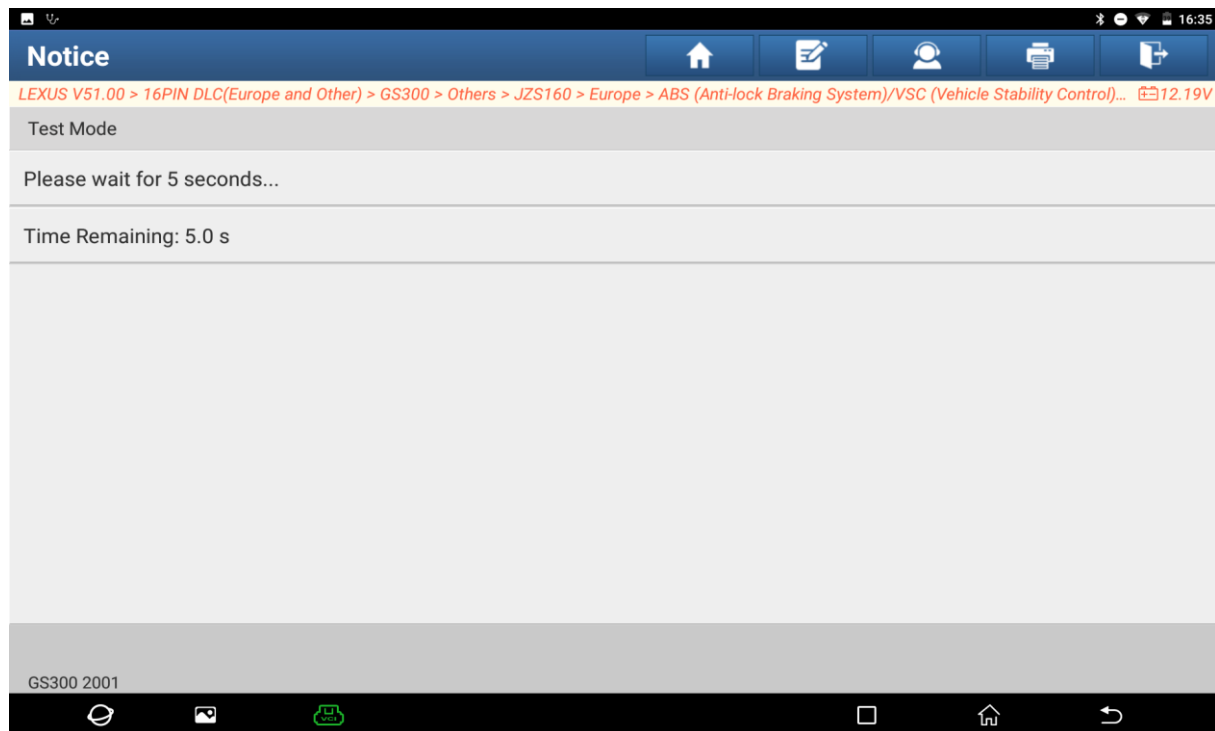


Figure 6

7. Keep the vehicle stationary for two seconds or more. Click Next. (See the following figure.)

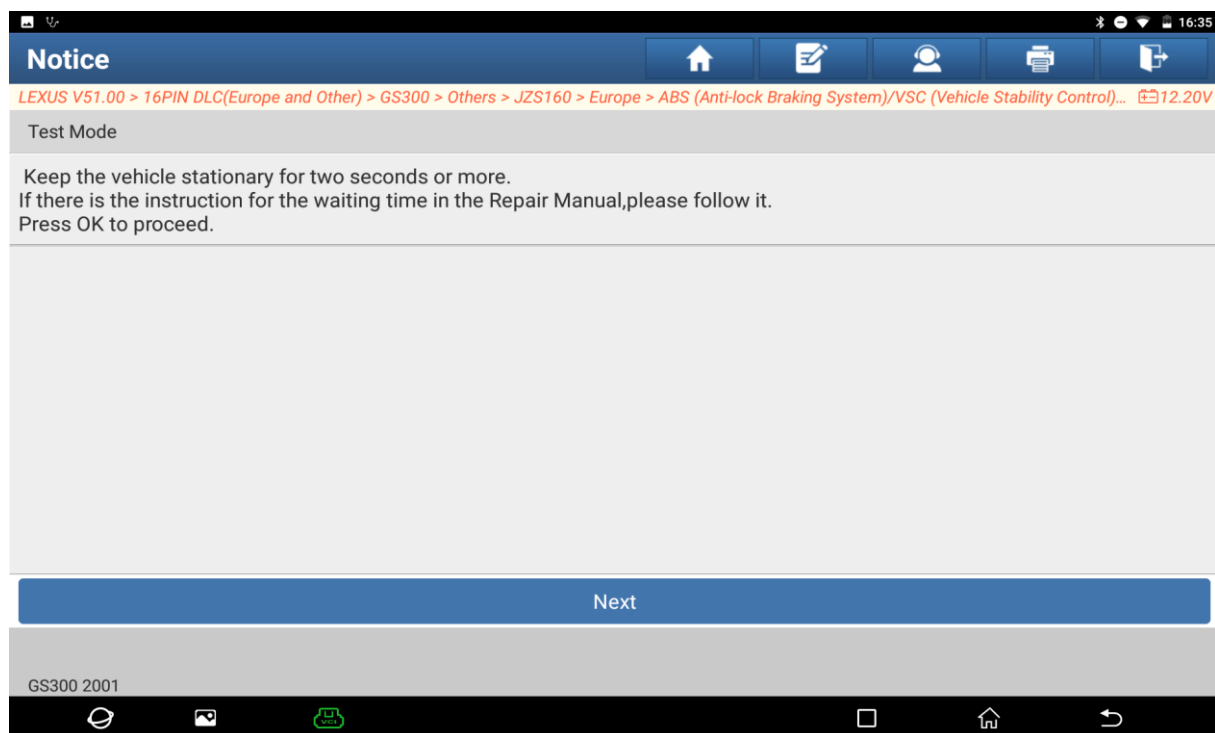


Figure 7

8. The ABS and VSC lamps flash. Calibration is completed. (See the following figure.)

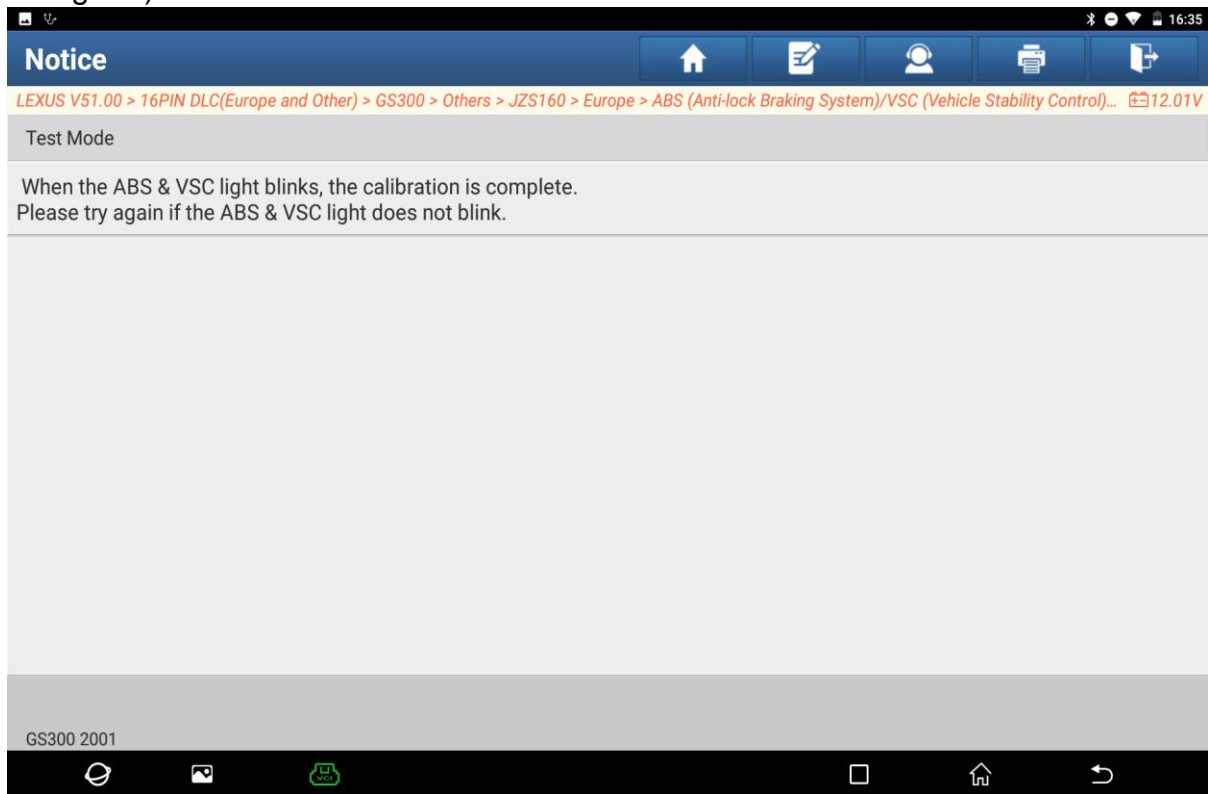


Figure 8

9. There is no DTC for the ABS system. (See the following figure.)

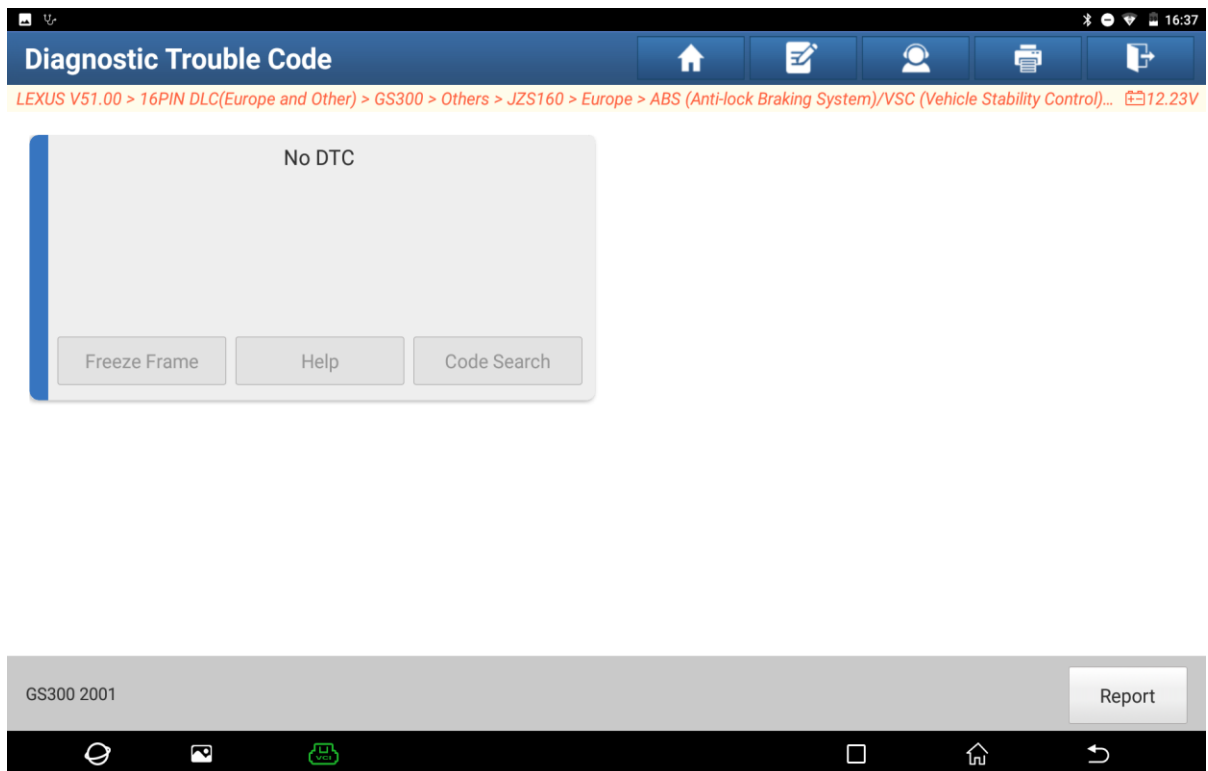


Figure 9

10. The instrument "VSC" and "ABS" MILs turn off. (See the following figure.)



Figure 10

Statement:

The content of this document is copyrighted by Shenzhen Launch Tech Co., Ltd., and no individual or organization may quote or reprint it without consent.