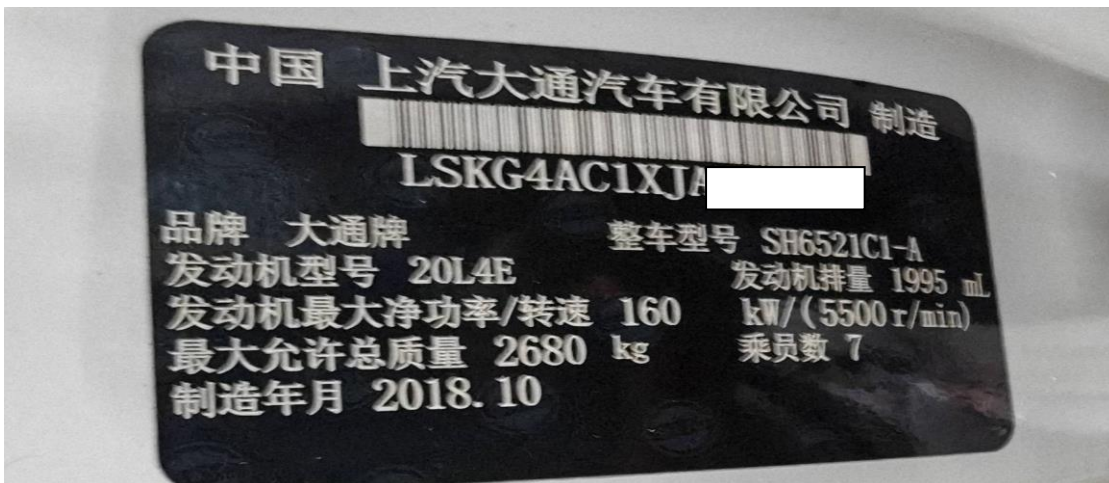


SAIC Maxus G10 Airbag System Writing Customer Mode

Function description: After replacing the airbag module on SAIC Maxus G10, it is necessary to perform the special function "writing customer mode".

Supported products: Launch PRO or PAD series comprehensive diagnostic equipment

Tested model: 2018 SAIC Maxus G10, VIN: LSKG4AC1XJA (see the following figure)



The instrument panel prompts "Please check the airbag". (See the following figure.)



Procedure:

1. There is no DTC for the airbag. (See the following figure.)

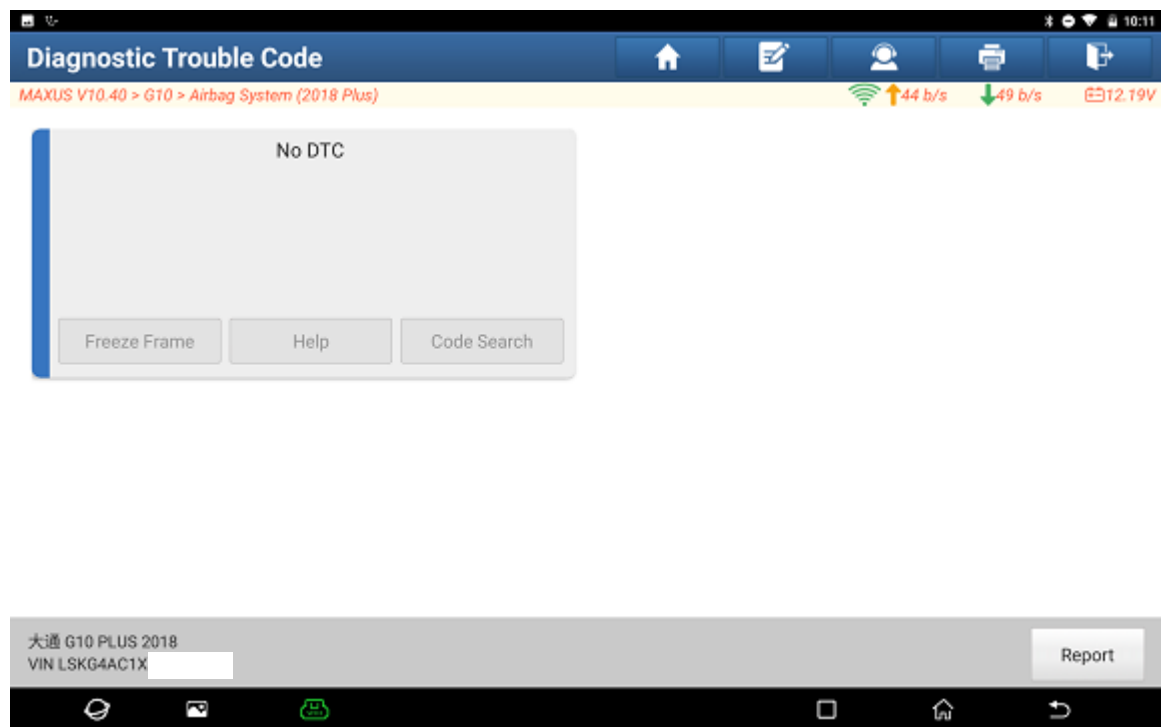


Figure 1

2. Choose [Special Function]. (See the following figure.)

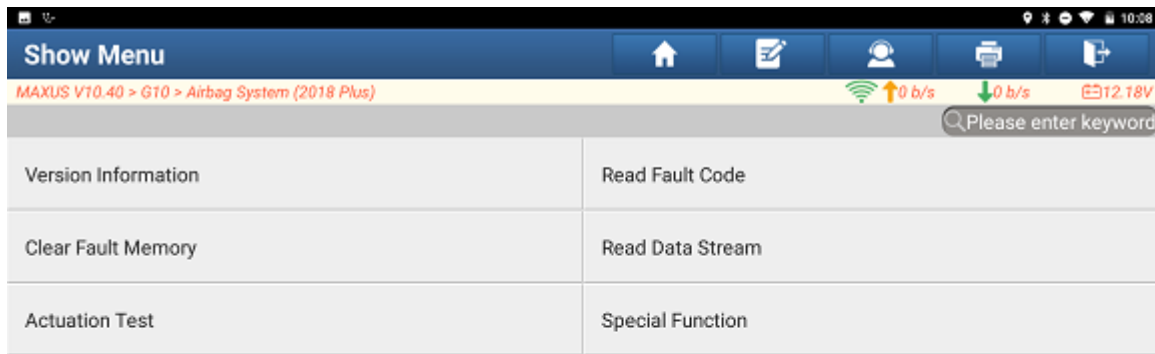


Figure 2

3. Choose [Write Customer Mode]. (See the following figure.)

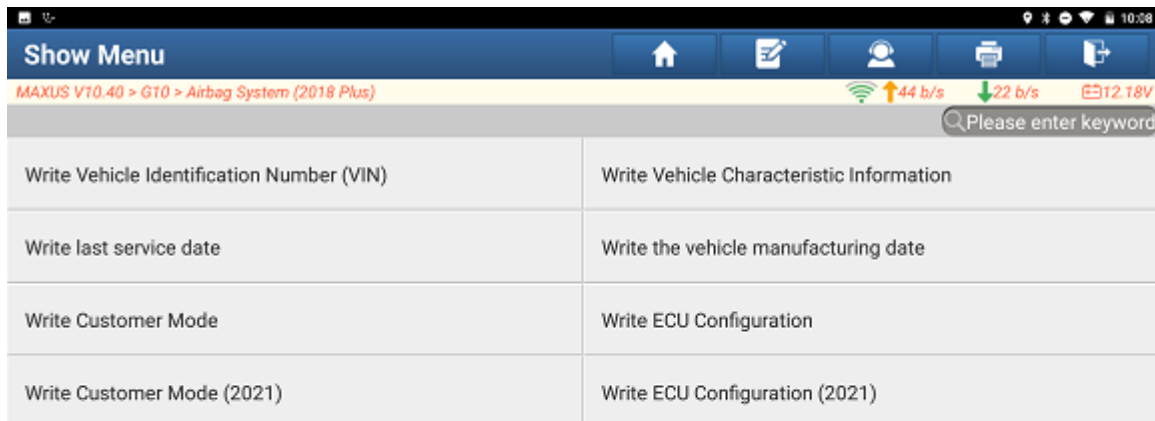


Figure 3

4. The code value is “Customer production mode (disable ignition)”. (See the following figure.)

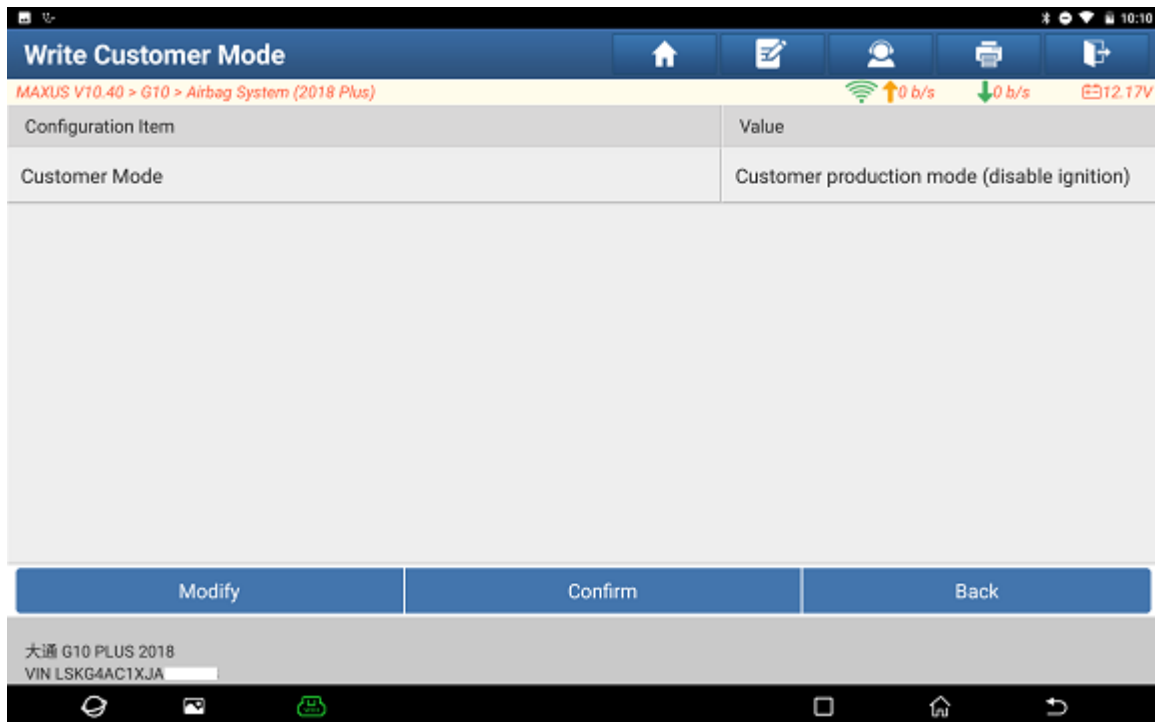


Figure 4

5. Choose [Customer on site mode (enable ignition)]. (See the following figure.)

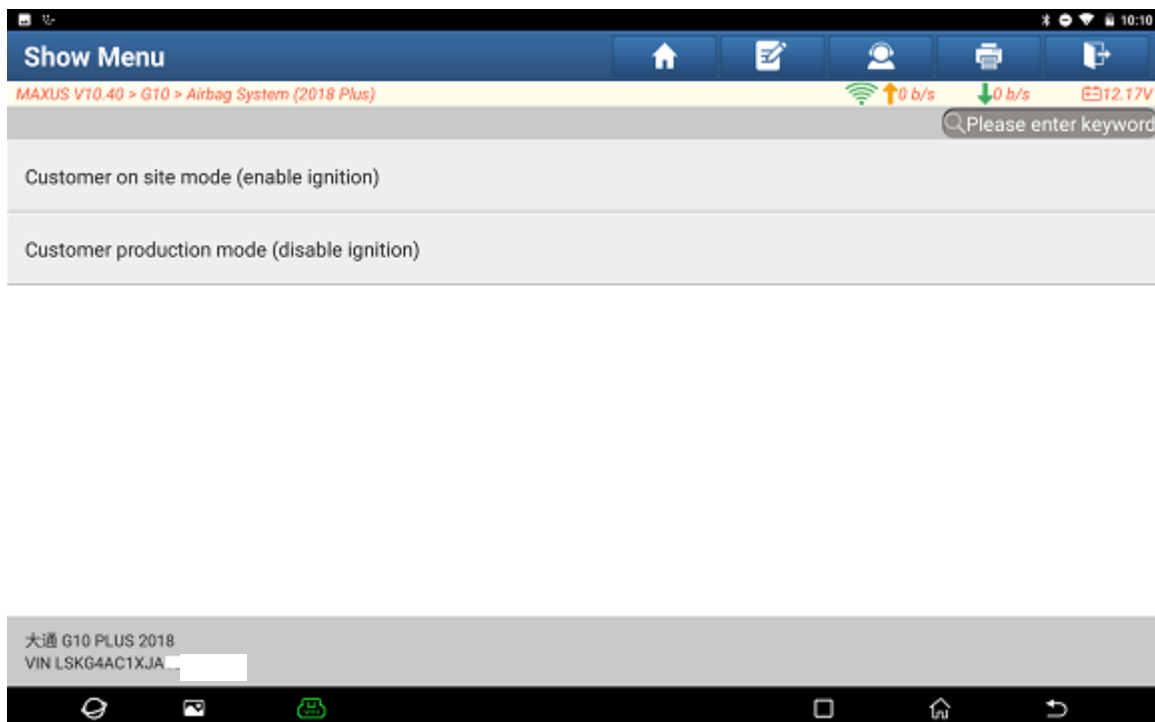


Figure 5

6. The code value is “Customer on site mode (enable ignition)”. (See the following figure.)

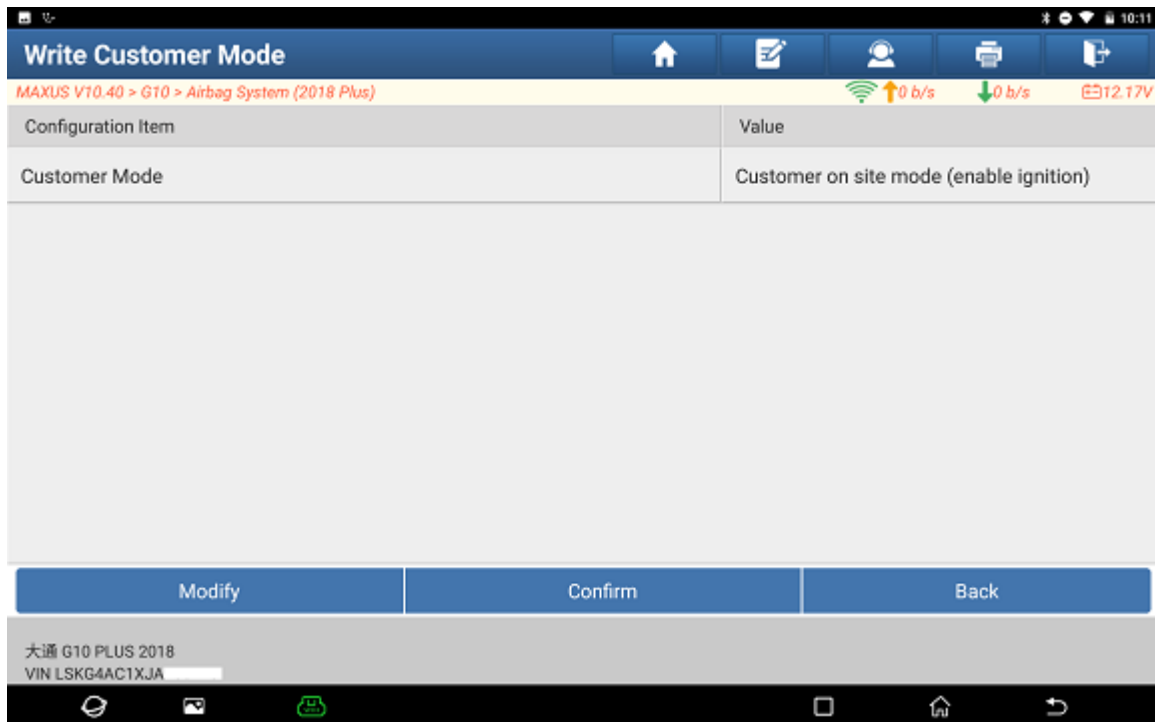


Figure 6

7. There is no DTC for the airbag. (See the following figure.)

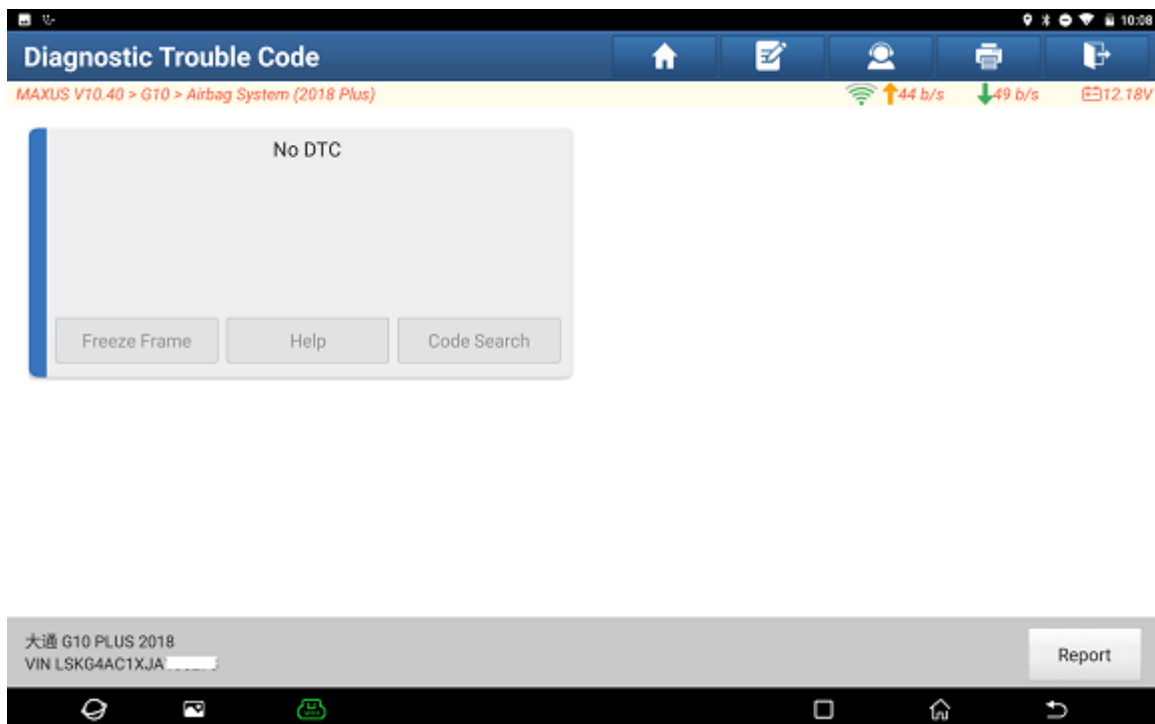


Figure 7

8. The airbag MIL turns off. (See the following figure.)



Figure 8

Statement:

The content of this document is copyrighted by Shenzhen Launch Tech Co., Ltd., and no individual or organization may quote or reprint it without consent.