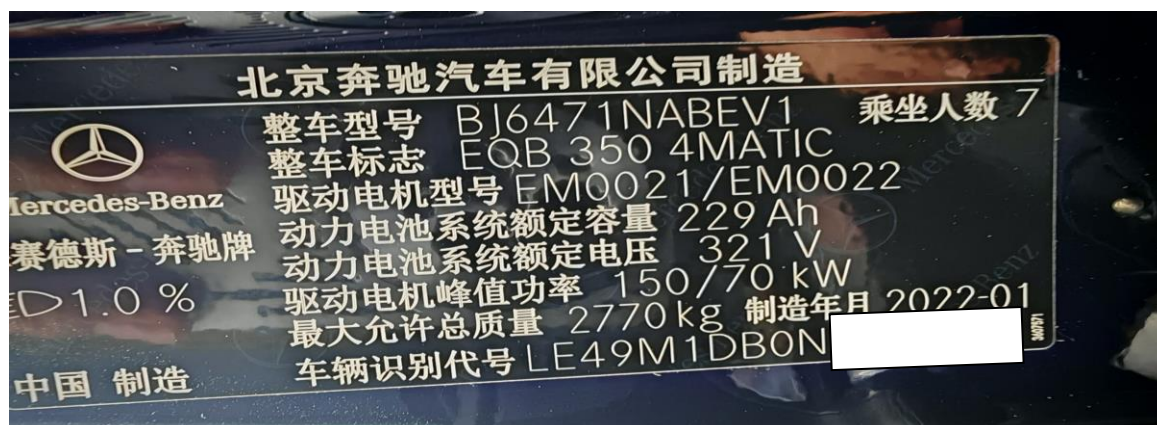


Mercedes-Benz EQB Battery Matching

Function Description: Battery matching, taking Mercedes-Benz EQB as an example.

Supported Products: Launch PRO or PAD series comprehensive diagnostic equipment

Tested Model: 2022 Mercedes-Benz EQB, VIN: LE49M1DB0NL***** (see the following figure)



Procedure:

1. Access the [Front signal acquisition and actuation module] system, and then choose [Actuation Test]. (See the following figure.)

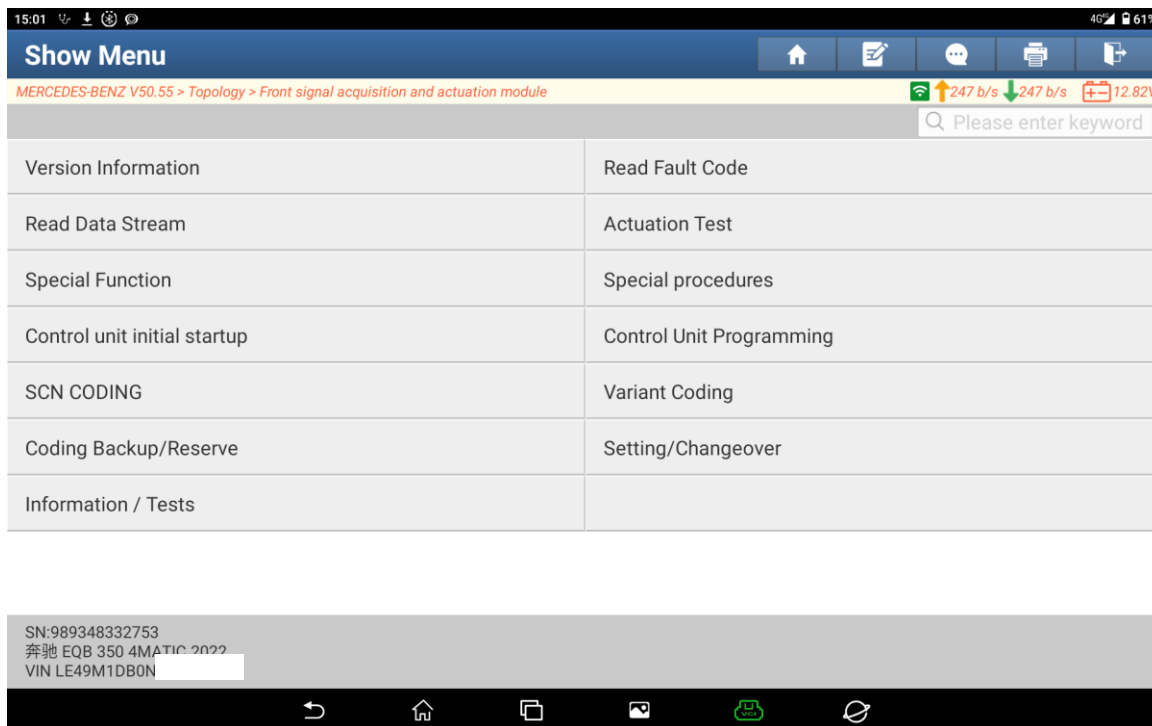


Figure 1

2. Choose [Confirmation of battery change]. (See the following figure.)

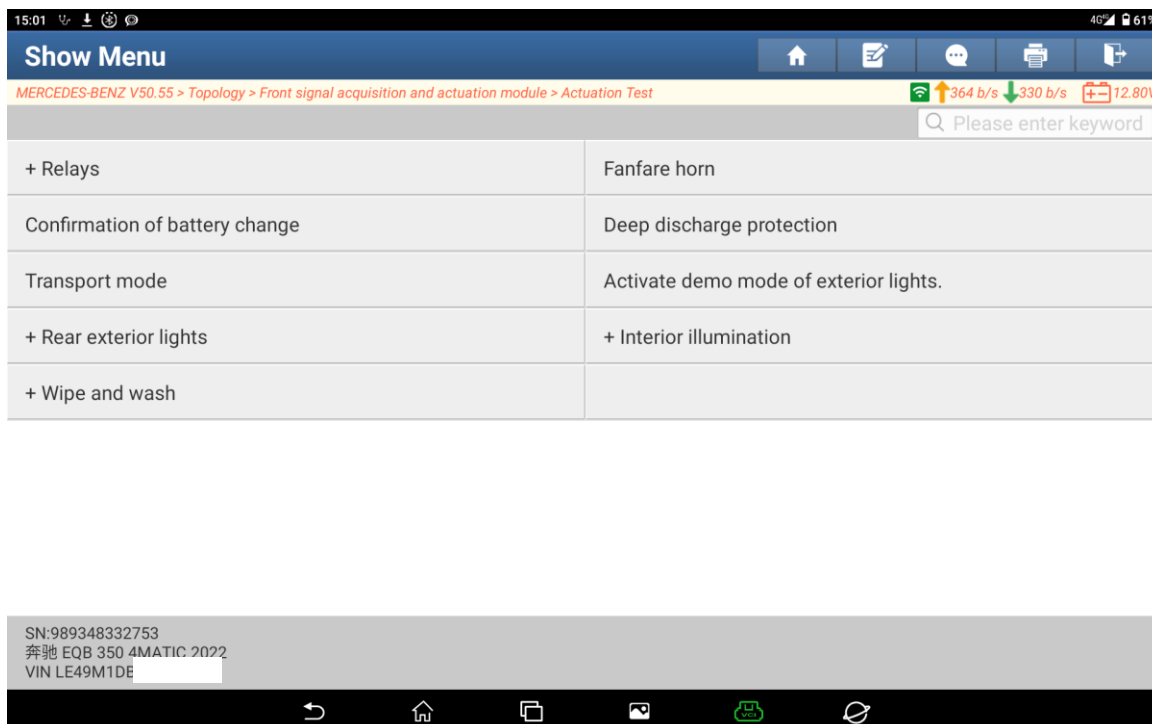


Figure 2

3. The current electrical charge throughput is 1357.1 Ah. Click [OK]. (See the following figure.)

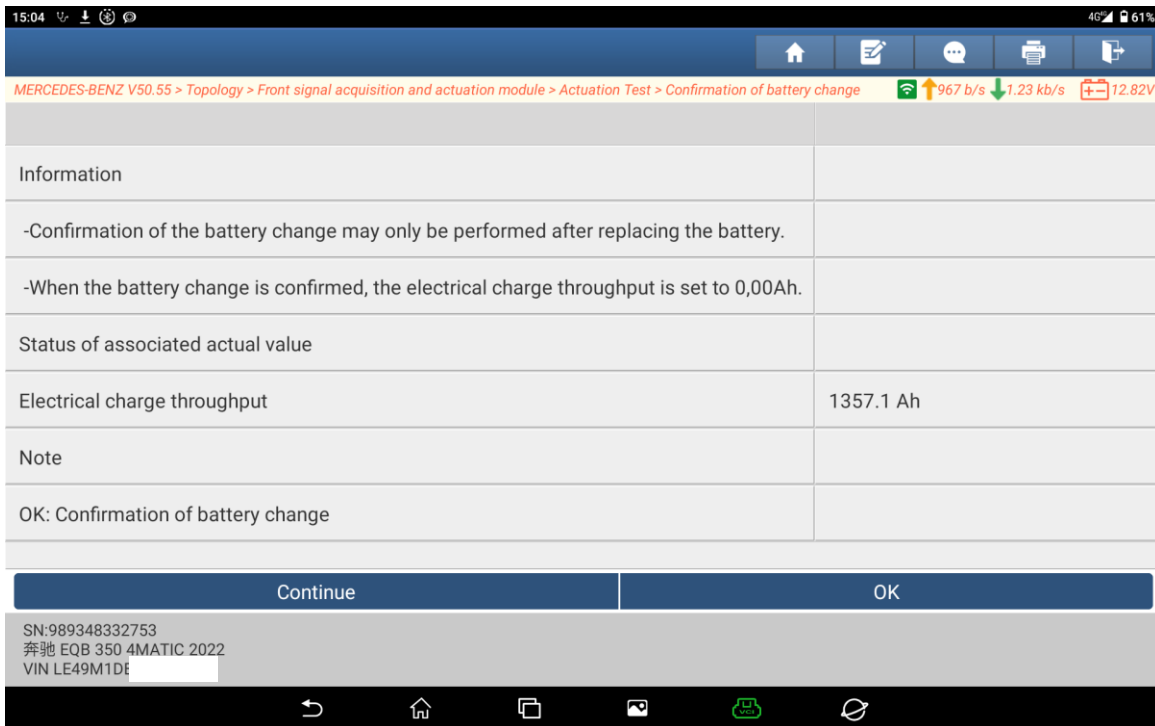


Figure 3

4. Reset completed successfully. Click [Continue]. (See the following figure.)

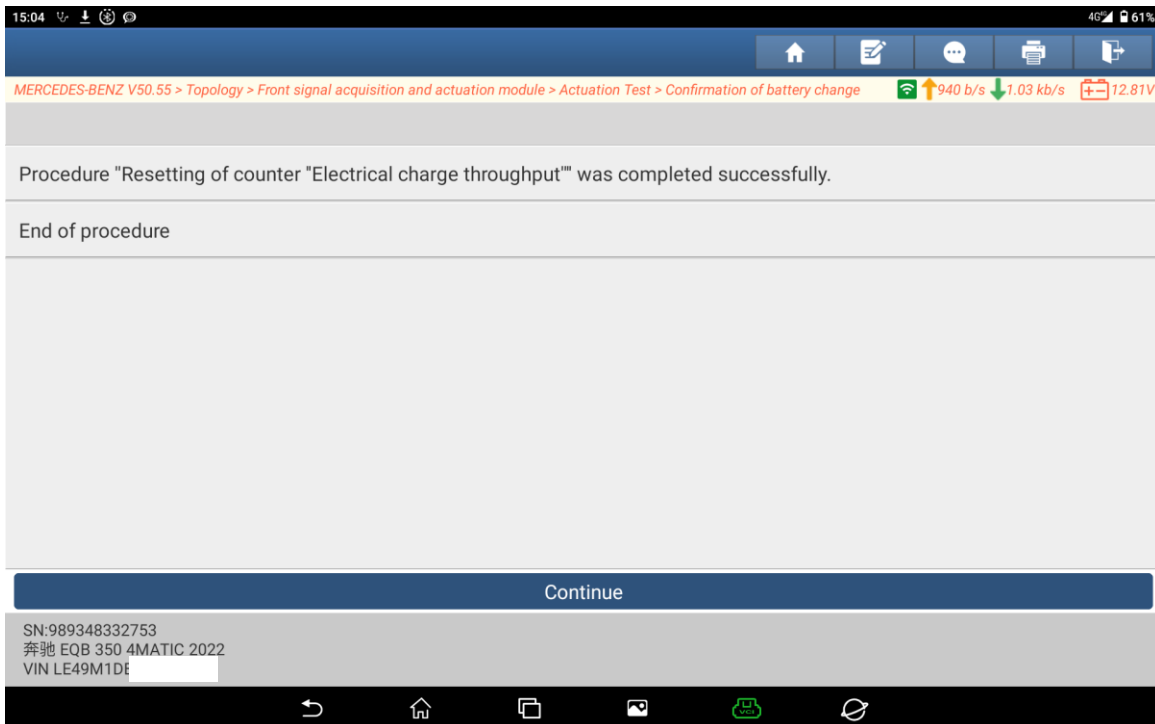
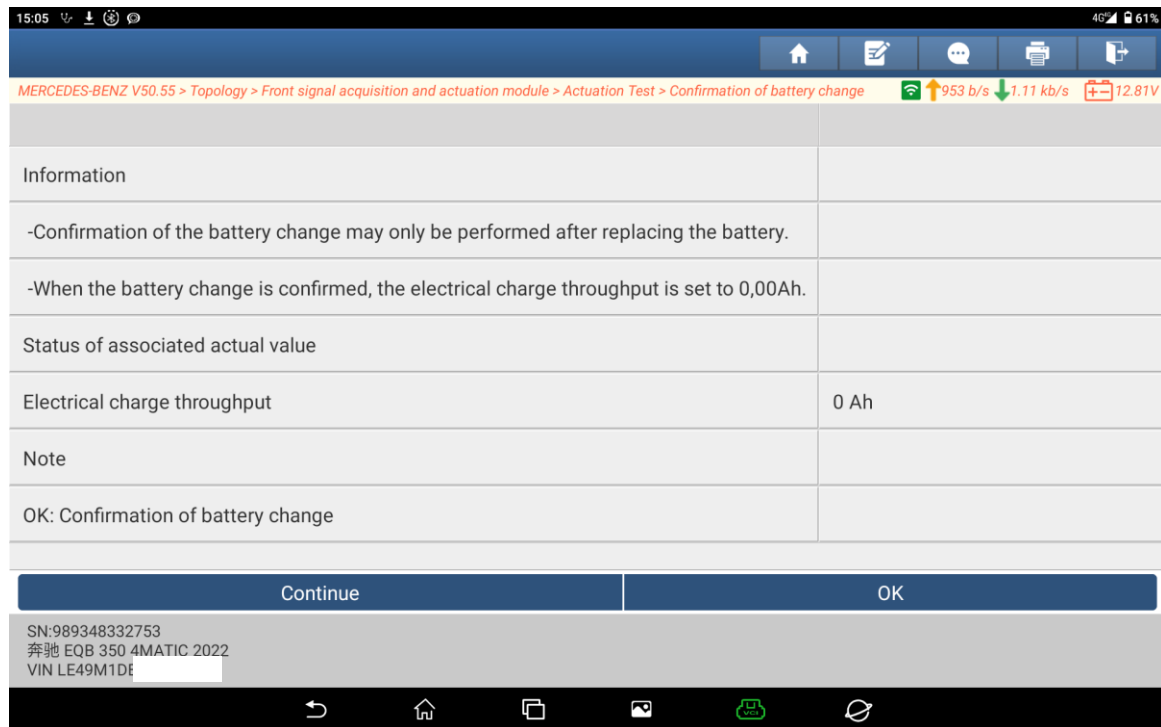


Figure 4

5. The electrical charge throughput after reset is 0 Ah. (See the following figure.)



Statement:

The content of this document is copyrighted by LAUNCH TECH CO., LTD., and no individual or organization may quote or reprint it without consent.