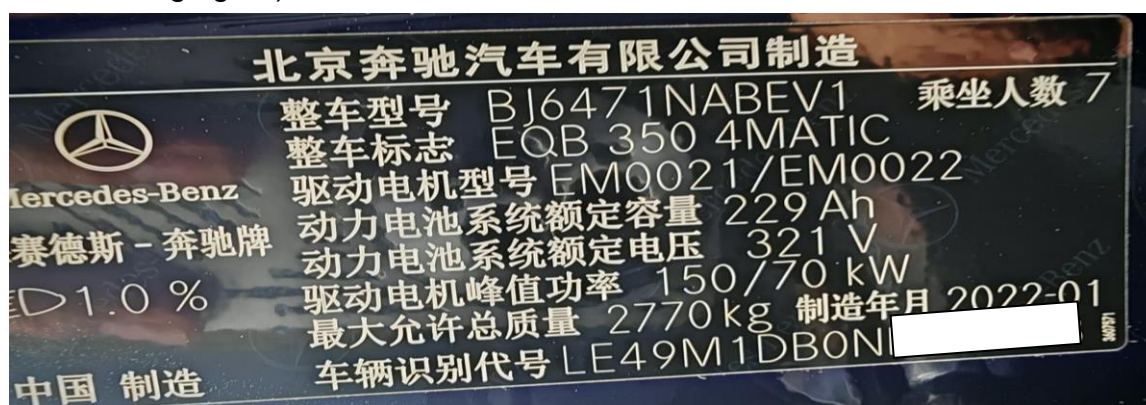


Mercedes-Benz EQB Service Light Reset

Function Description: Service light reset, taking Mercedes-Benz EQB as an example.

Supported Products: Launch PRO or PAD series comprehensive diagnostic equipment

Tested Model: Mercedes-Benz EQB 2022, VIN: LE49M1DB0NL***** (see the following figure)



Instrument cluster prompt: Next service B1 due in 567 km



Procedure:

1. Access the [Instrument cluster] system and choose [Actuation Test]. (See the following figure.)

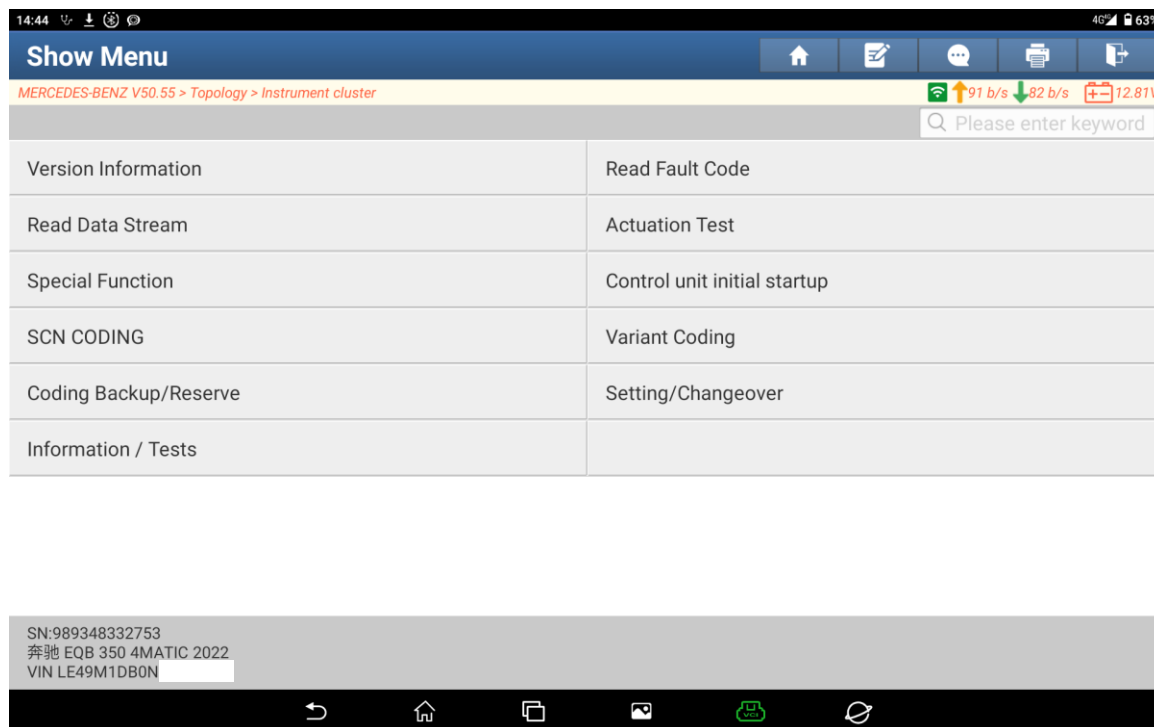


Figure 1

2. Choose [+ Maintenance]. (See the following figure.)



Figure 2

3. Choose [Confirmation of general maintenance]. (See the following figure.)

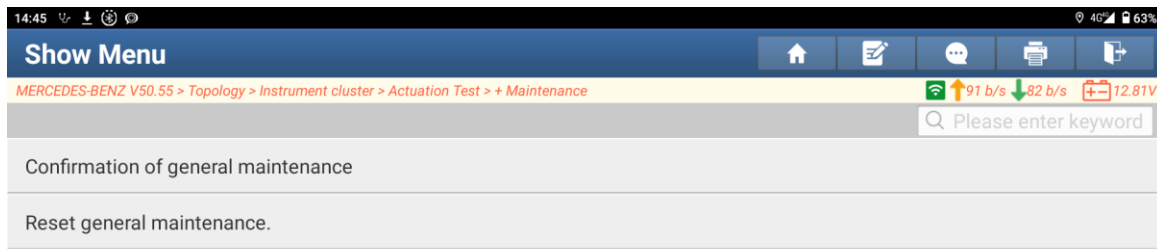


Figure 3

4. Remaining mileage until next service: 567 km. Click [F1]. (See the following figure.)



Figure 4

5. Execution successful. (See the following figure.)

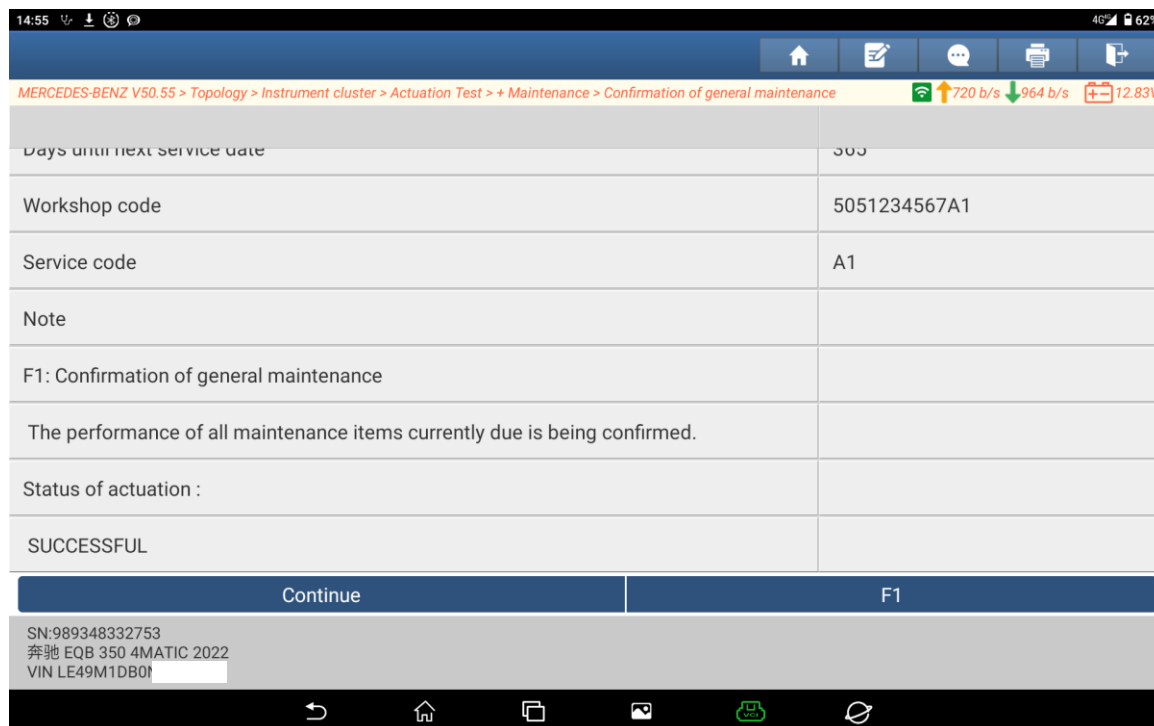


Figure 5

6. Remaining mileage until next service: 20000 km. (See the following figure.)

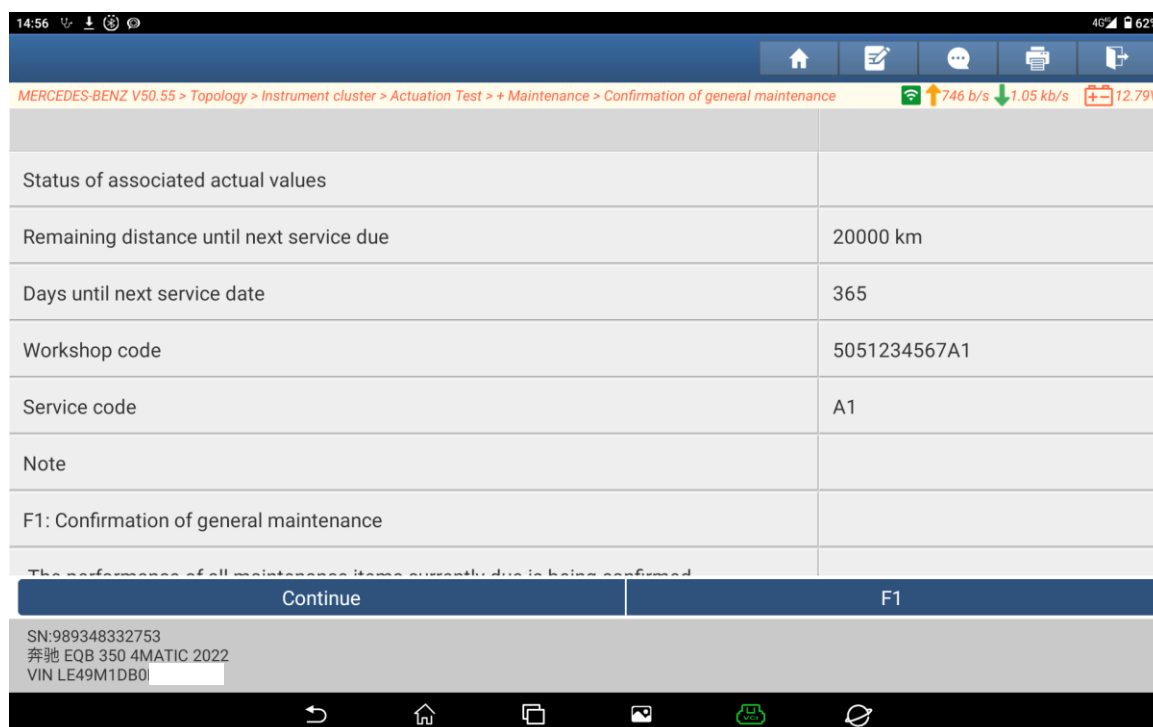


Figure 6

7. Instrument cluster prompt: Next service A due in 20000 km. (See the following figure.)



Figure 7

Statement:

The content of this document is copyrighted by LAUNCH TECH CO., LTD., and no individual or organization may quote or reprint it without consent.