

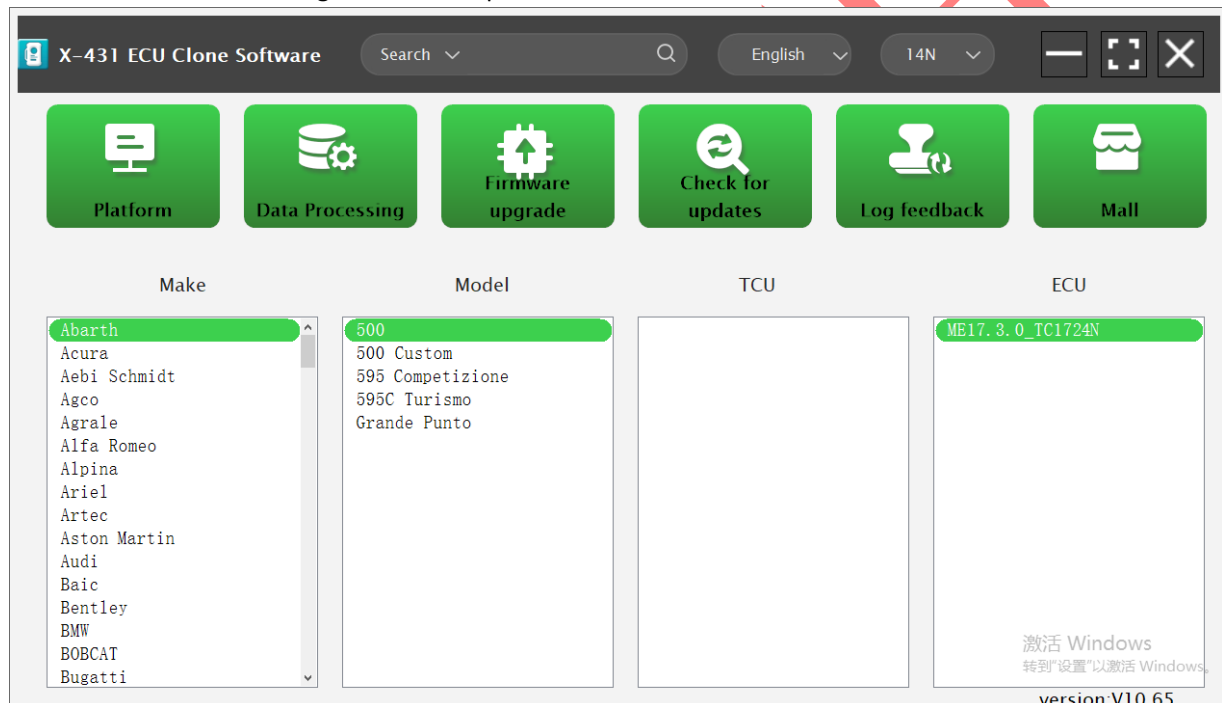
# MPS6 Transmission TCU Cloning

**Function Description:** Cloning service for MPS6 transmission control unit (TCU)

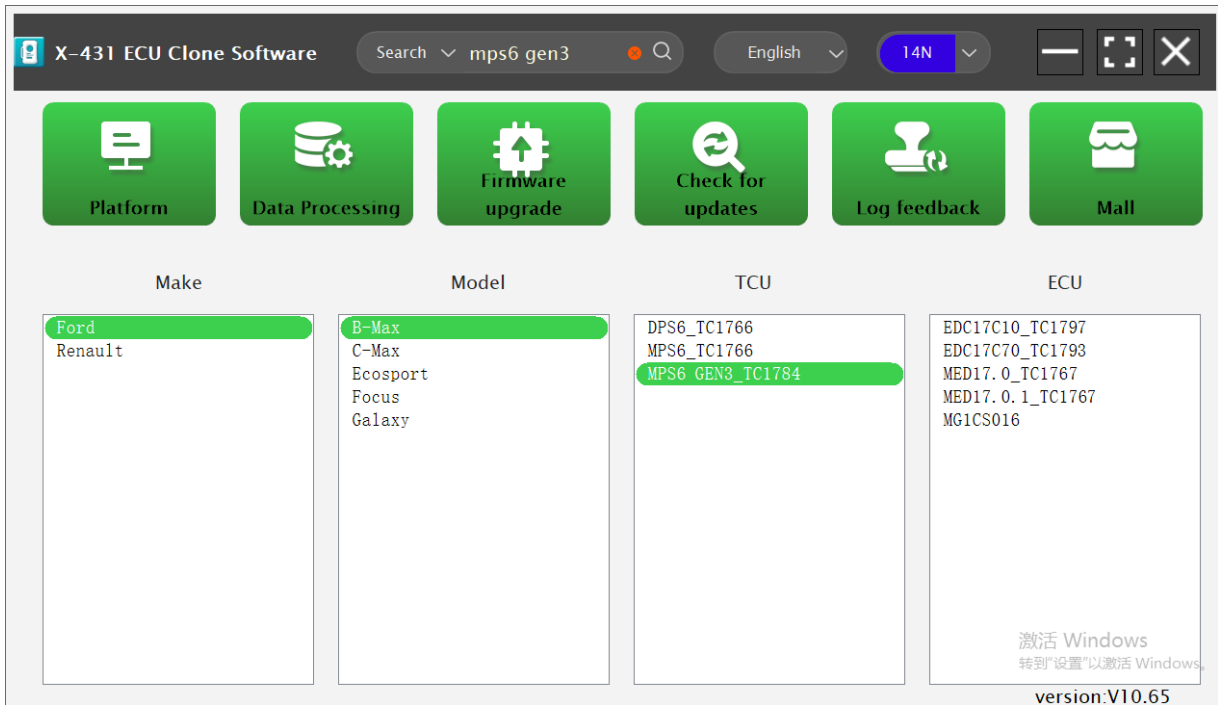
**Supported Equipment:** X-431 ECU cloning module, G3-PC anti-theft programming device and G3 programmer

## Operating Procedures:

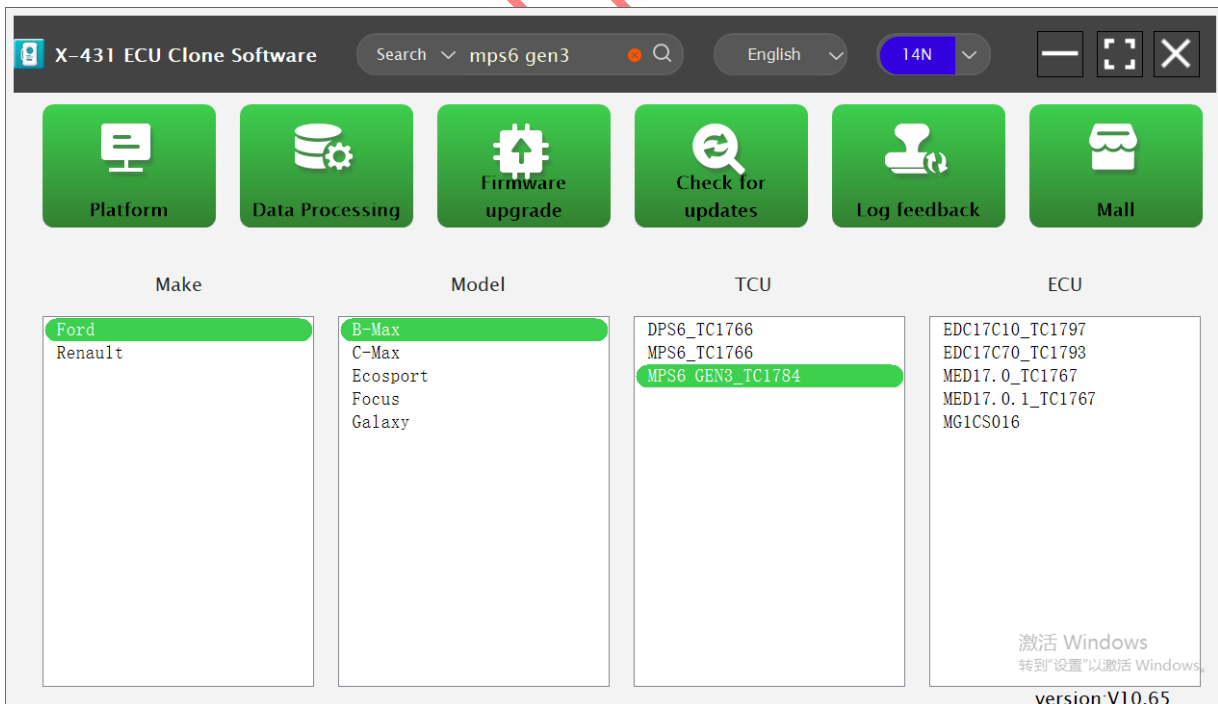
1. Connect the ECU cloning tool to a computer and ensure stable network access, then launch the software



2. Enter the transmission model **MPS6** in the top search bar



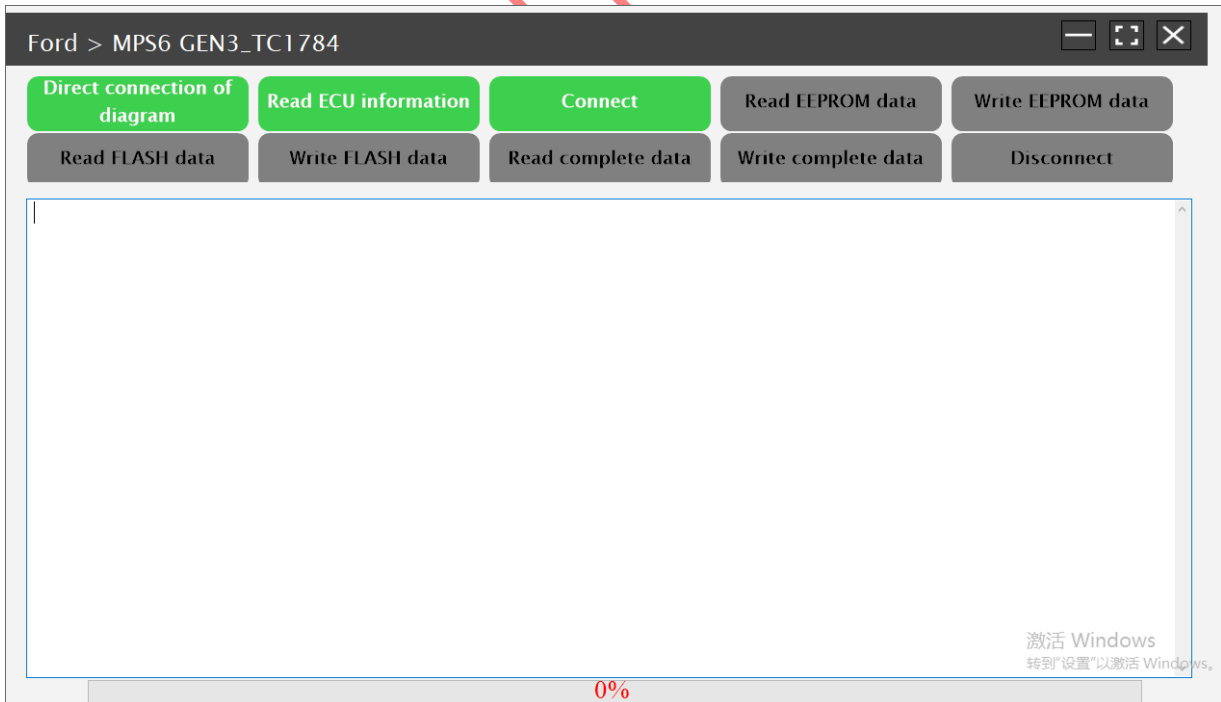
3. Select the corresponding vehicle brand and model, double-click the MPS6 transmission specification to enter the next page



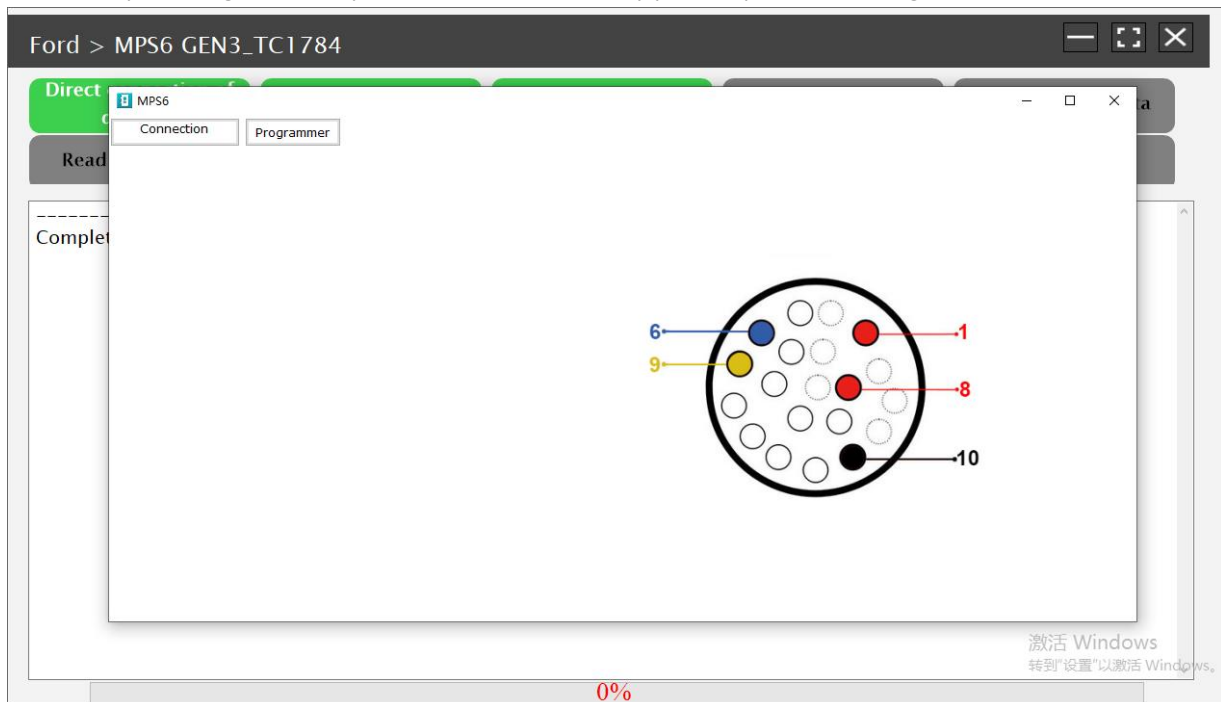
4. Click **Next**



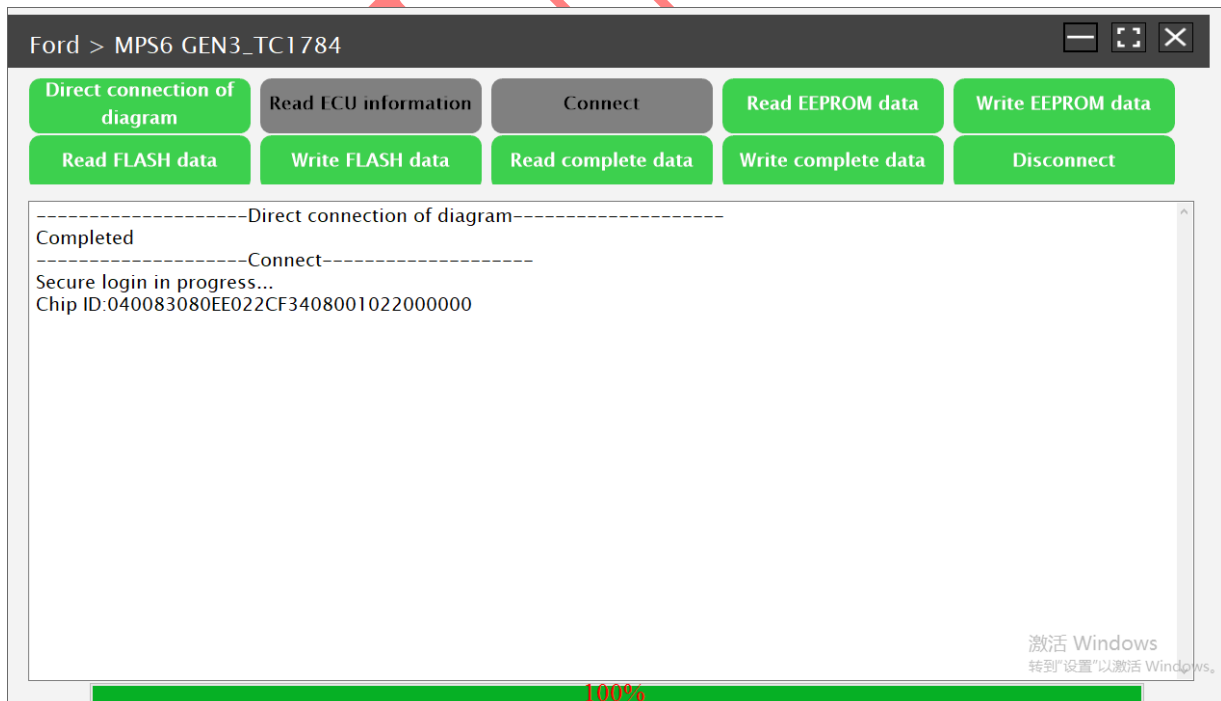
5. Select **Direct Wiring Diagram**

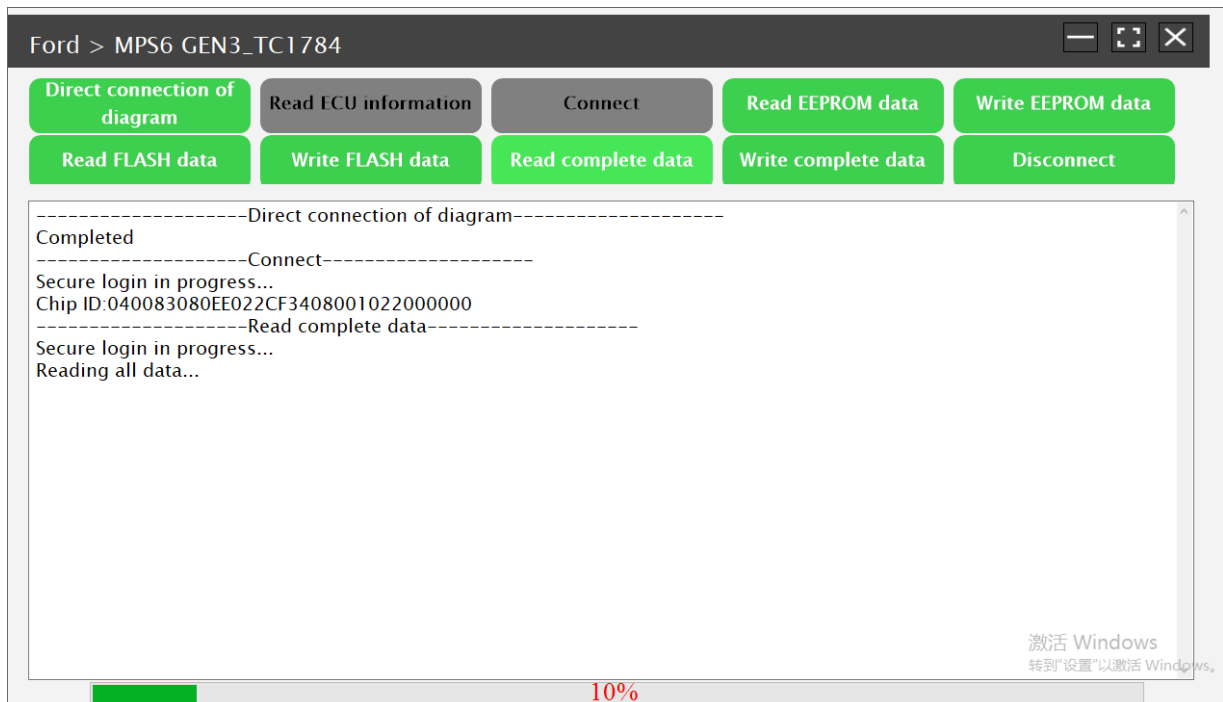


6. Wire up the original factory transmission TCU strictly per the provided wiring schematic

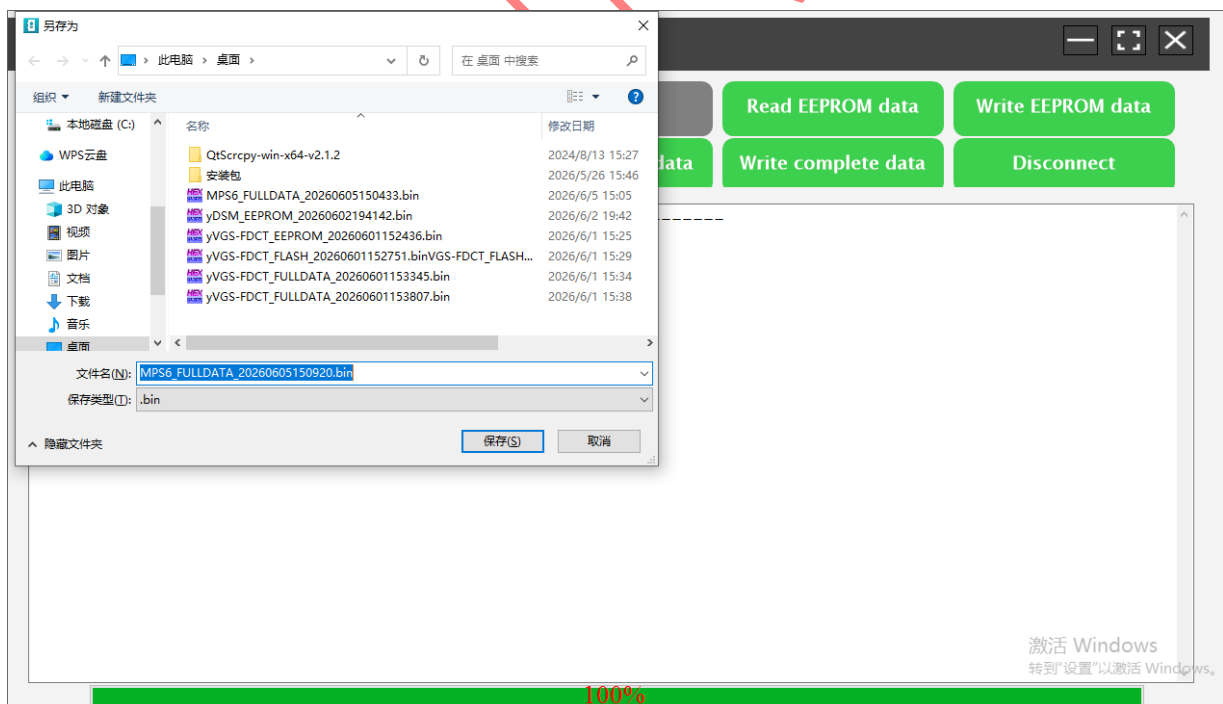


7. Keep network connected and click **Connect**; the tool will automatically read TCU version information including software and hardware part numbers

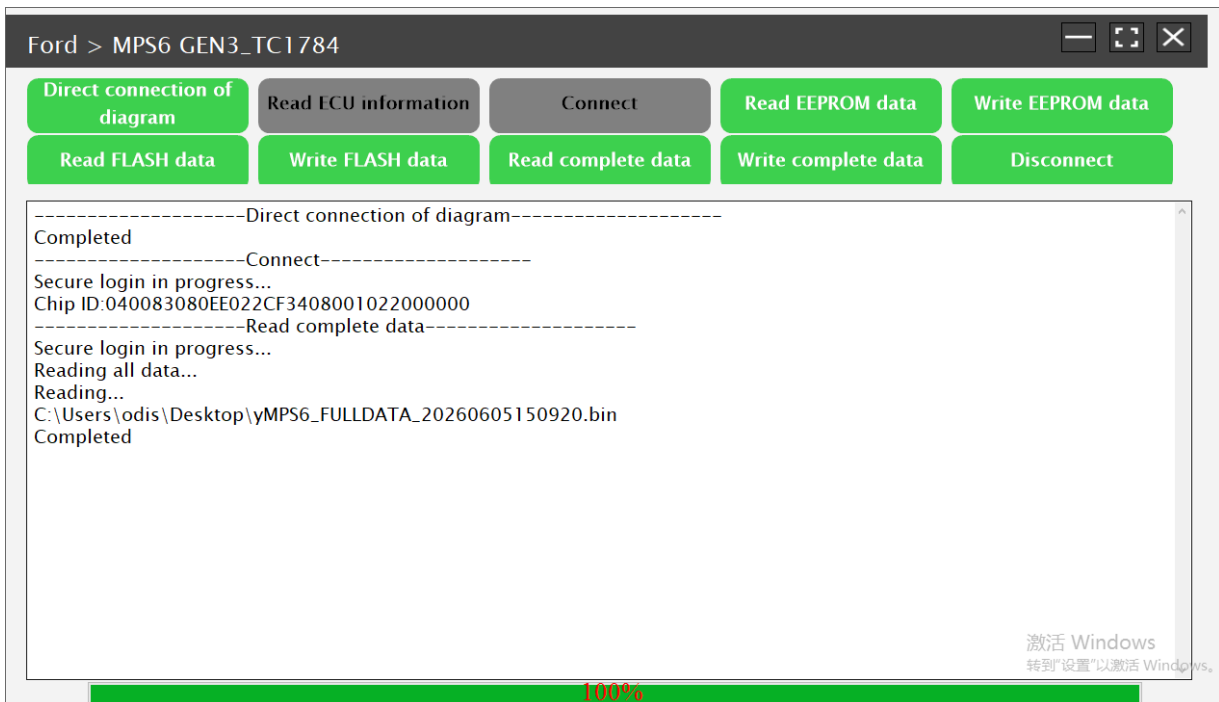


8. After successful connection, click **Read Full Data**

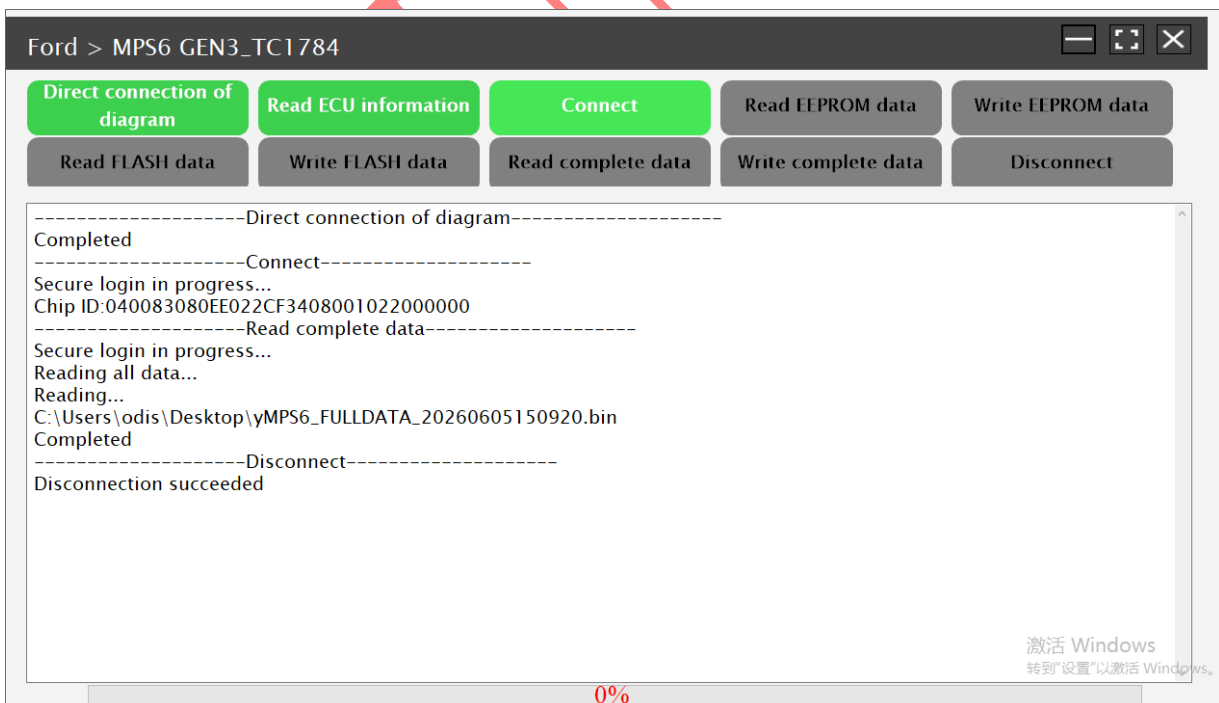
## 9. Data read successful, save the read file



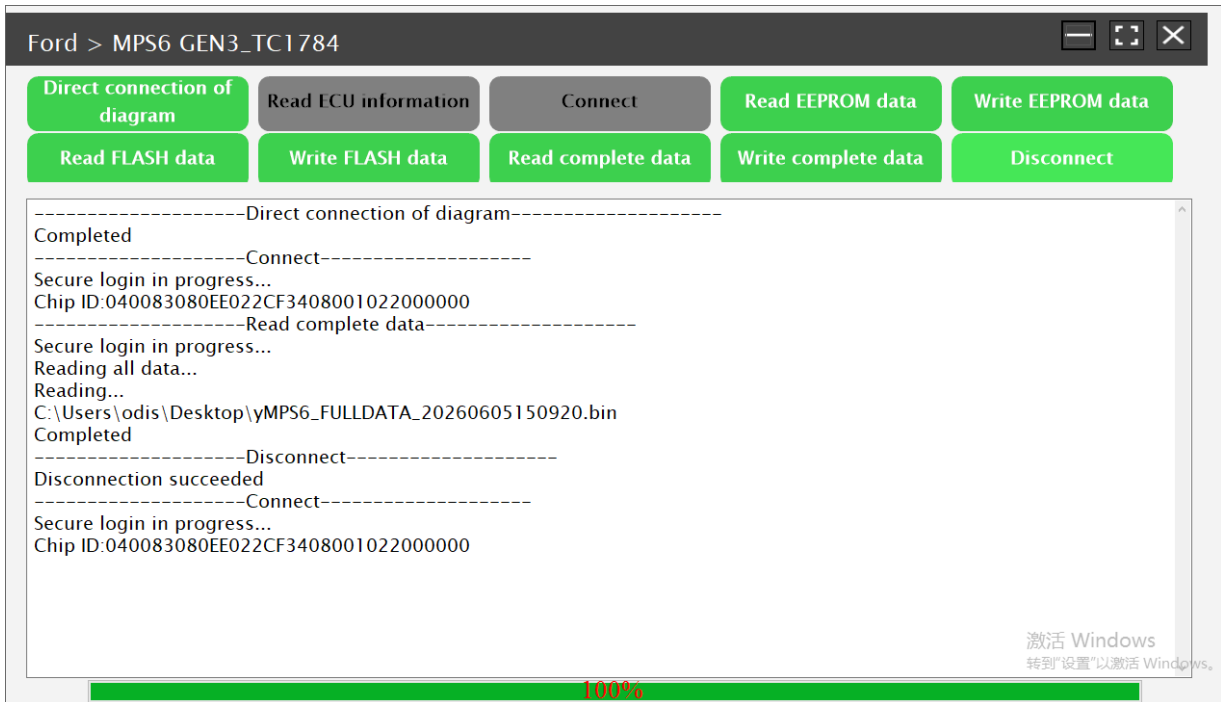
10. After saving the data, select [Disconnect]



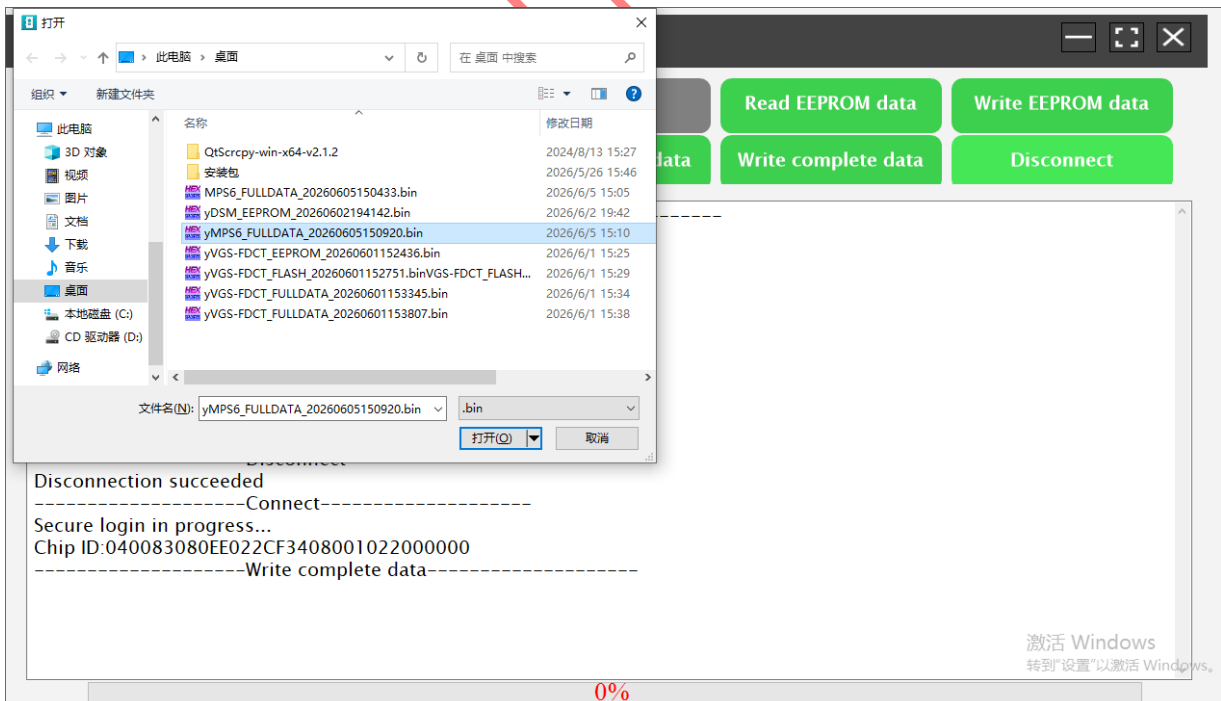
11. Connect the second-hand computer and select [Connect] to enter



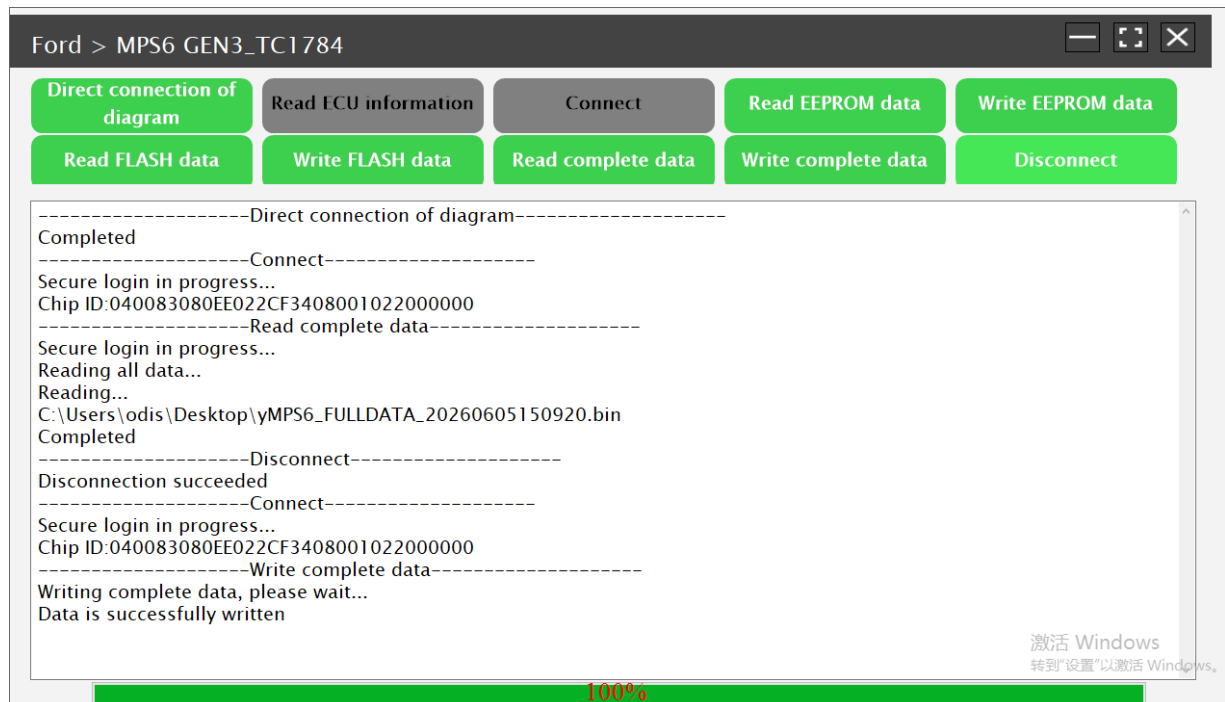
12. Select 'Write Complete Data' to enter



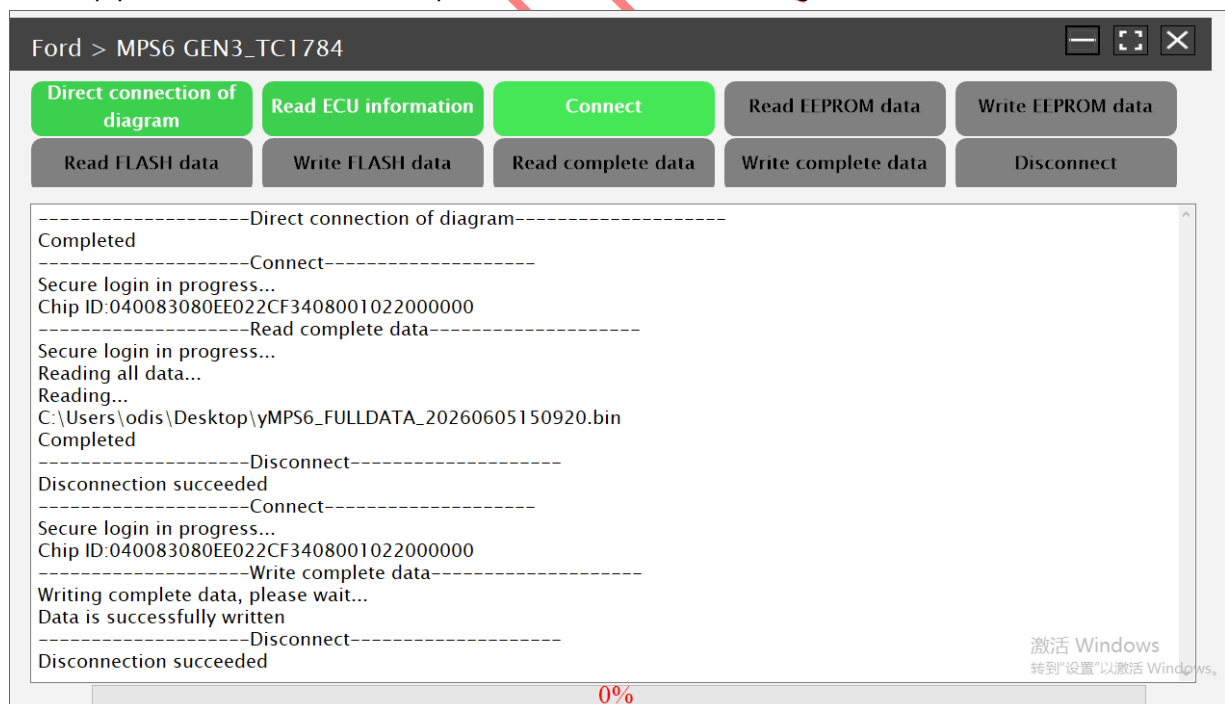
13. Select the just saved original car data



## 14. Data write successful, select 【 Disconnect 】



## 15. Simply load the second-hand computer onto the vehicle for testing

**Statement:**

The content of this document is copyrighted by LAUNCH TECH CO., LTD., and no individual or organization may quote or reprint it without consent.