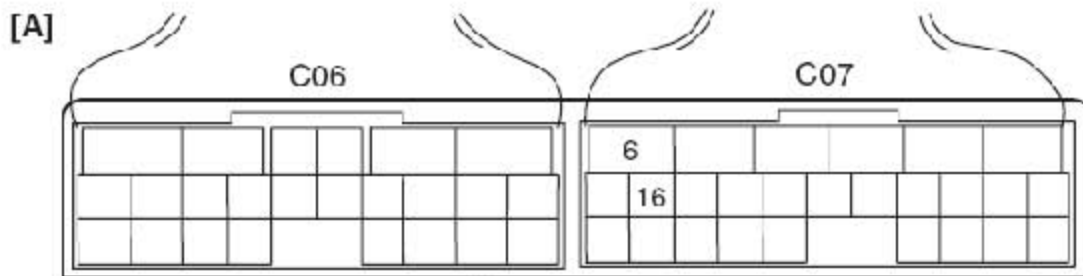
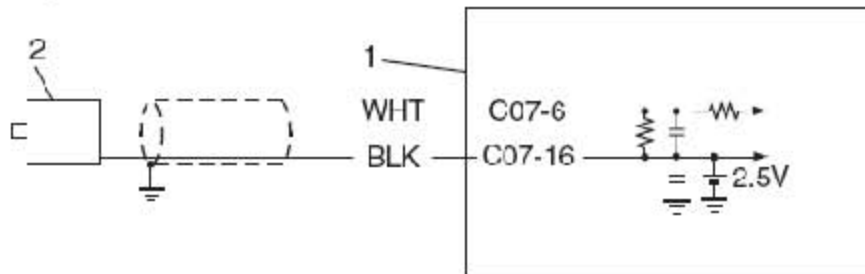


P0717: Input / Turbine Speed Sensor Circuit Malfunction

Wiring Diagram



1. TCM	2. Input shaft speed sensor	[A]: Terminal arrangement of TCM connector (viewed from harness side)
--------	-----------------------------	---

DTC Detecting Condition and Trouble Area

DTC detecting condition	Trouble area
No input shaft speed sensor signal is detected although output shaft speed sensor signals are detected.	<ul style="list-style-type: none"> • Input shaft speed sensor or its circuit malfunction • Improper input shaft speed sensor installation • Damaged direct clutch drum • Foreign material attachment to sensor or drum • TCM

DTC Confirmation Procedure

- 1) Connect scan tool to DLC with ignition switch OFF, if available.
- 2) Clear DTC in TCM memory and start engine.
- 3) Shift select lever to "D" range and drive vehicle at 25 km/h (15 mile/h) or more with 3rd gear at least for 1 km (0.6mile).
- 4) Stop vehicle and check DTC.

DTC Troubleshooting

Step	Action	Yes	No
1	Was "A/T System Check" performed?	Go to Step 2.	Go to "A/T System Check".
2	<p>Check input shaft speed sensor circuit</p> <p>1) Disconnect TCM connectors with ignition switch OFF.</p> <p>2) Check for proper connection to input shaft speed sensor at "C07-6" and "C07-16" terminals.</p> <p>3) If OK, check resistance of sensor circuit.</p> <p>Input shaft speed sensor specification</p> <p>Between terminals "C07-6" and "C07-16": 560 – 680 Ω at 20 °C (68 °F)</p> <p>Between terminal "C07-6" / "C07-16" and ground: No continuity</p> <p>Are check result satisfactory?</p>	Go to Step 4.	Go to Step 3.
3	<p>Inspect input shaft speed sensor</p> <p>1) Inspect input shaft speed sensor referring to "Input Shaft Speed Sensor Inspection".</p> <p>Is result satisfactory?</p>	"WHT" or "BLK" circuit open or short.	Replace input shaft speed sensor.
4	<p>Check visually input shaft speed sensor and direct clutch drum for the following</p> <ul style="list-style-type: none"> • No damage • No foreign material attached • Correct installation <p>Are they in good condition?</p>	<p>Intermittent trouble or faulty TCM.</p> <p>Check for intermittent referring to "Intermittent and Poor Connection Inspection in Section 00".</p> <p>If OK, substitute a known-good TCM and recheck.</p>	Clean, repair or replace.