

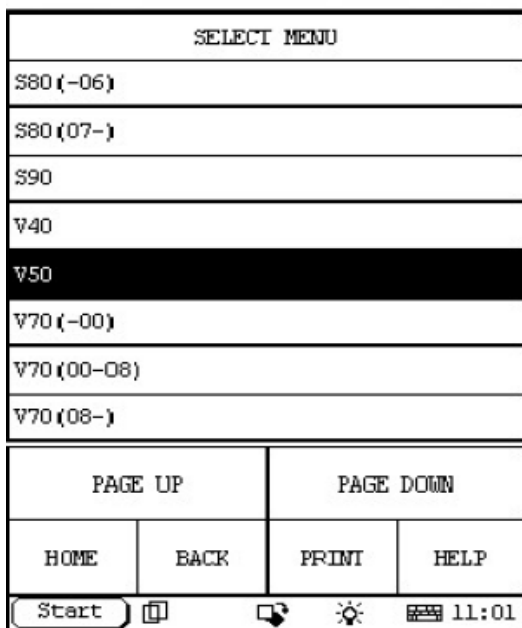
Calibration (car with DSTC)

This function is intended to calibrate the adaptive data in the brake control module (BCM).

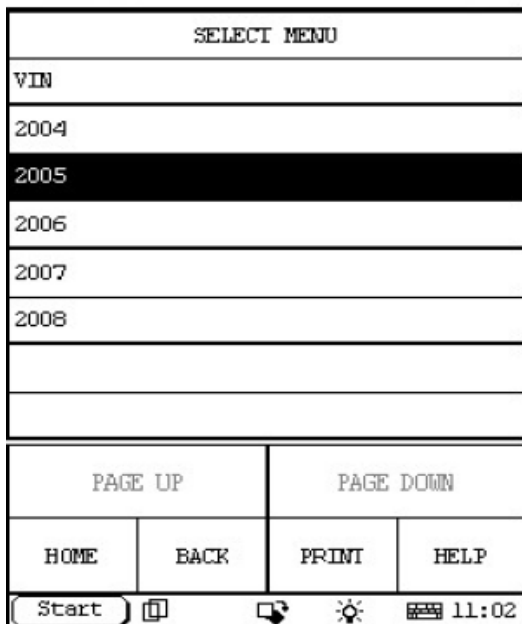
Now we take V50_2005 08688027 B (ECU Diagnostic Part Number) as an example to illustrate the operation:

Note: The highlight item in the figure indicates corresponding action.

1. step 1: V50



2. step 2: select year



3. step 3: select ABS

SELECT MENU			
General Service			
ECM(Engine Control Module)			
DIESEL ENG(Fuel system/Combined system)			
TCM(Transmission Control Module)			
ABS/BCM(Anti-brake System Module)			
SRS(Supplemental Restraint System Module)			
CEM(Central electrical module)			
PAGE UP		PAGE DOWN	
HOME	BACK	PRINT	HELP
Start			11:02

4. step 4:

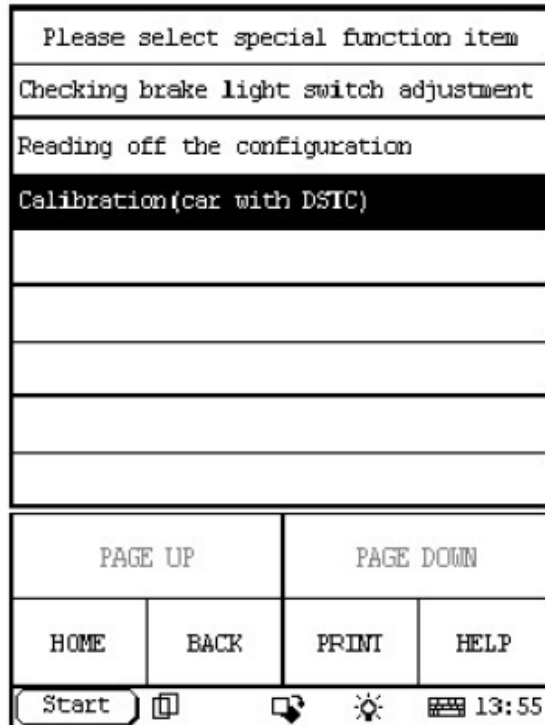
Select special function

If you can't find the Special Function menu, it means the function has not been developed on your vehicle. Please record the VIN (Vehicle Identification Number) and Version Information (can be read by X431 with the function: Reading off control module ID) and email to Launch (x431@cnlaunch.com). We may work out a solution on how to solve the problem.

Select function			
Reading off control module ID			
Reading off Diagnostic Trouble Codes			
Reading off extended diagnostic trouble code(DTC) information			
Erasing Diagnostic Trouble Codes			
Parameter display			
Activating components/functions			
Special Function			
PAGE UP		PAGE DOWN	
HOME	BACK	PRINT	HELP
Start			11:03

5. step 5:

Select Calibration (car with DSTC)



6. step 6:

The information of Calibration (car with DSTC):

Note! Applies only to cars with DSTC (dynamic stability and traction control).

Note! The adaptive data in the brake control module (BCM) must be calibrated for the stability function to operate correctly after repair.

When replacing:

The brake control module (BCM), the adaptive data for the brake pressure sensor, lateral accelerometer, accelerometer (only cars with All-wheel drive) and steering wheel angle sensor must be calibrated:




The body sensor cluster stability sensor (BSC), the adaptive data for the yaw rate sensor, lateral accelerometer and accelerometer (only cars with All-wheel drive) must be calibrated.

Ensure that the car is unloaded and on a flat surface (no incline) with the wheels pointing straight ahead

Brake pedal released (no braking)

Ignition on

With the ignition turned on, turn the steering wheel at least 15° to the right or left. Then turn the steering wheel so that the front wheels are pointing straight ahead. Start the calibration.

Note information			
Note! Applies only to cars with DSTC (dynamic stability and traction control)			
Note! The adaptive data in the brake control module (BCM) must be calibrated for the stability function to operate correctly after repair. When replacing: The brake control module (BCM), the adaptive data for the brake pressure sensor, lateral accelerometer, accelerometer (only cars with All-wheel drive) and steering wheel angle sensor must be calibrated			
The body sensor cluster stability sensor (BSC), the adaptive data for the yaw rate sensor, lateral accelerometer and accelerometer (only cars with All-			
OK	PAGE UP	PAGE DOWN	CANCEL
Start			 13:55

7. step 7:

Select OK, then it will display four Item function:




Steering angle, calibration

Lateral accelerometer calibration

Pressure sensor calibration

Longitudinal accelerometer, calibration

When you select any one item, it will send command to vehicle and show result to you (see step 8).

Calibration(car with DSTC)			
Steering angle, calibration			
Lateral accelerometer calibration			
Pressure sensor calibration			
Longitudinal accelerometer, calibration			
PAGE UP		PAGE DOWN	
HOME	BACK	PRINT	HELP
Start			 13:59

8. step 8:

If calibrate successes, it will display: Operation finished.

Otherwise it will display: Operation failed. In the case, please try again.

