

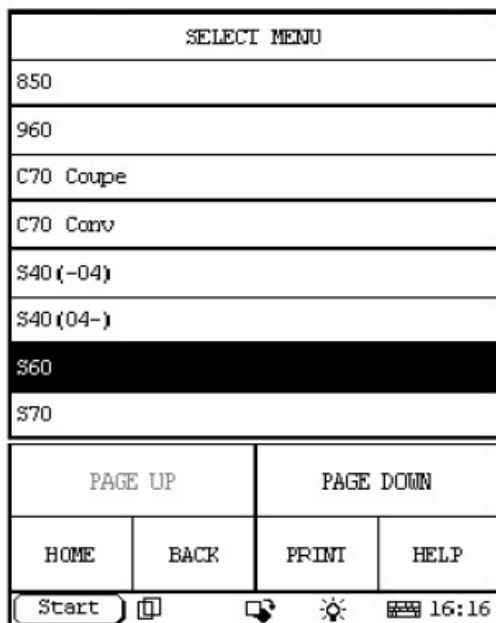
Initialize the window

This function is intended to initialize the window.

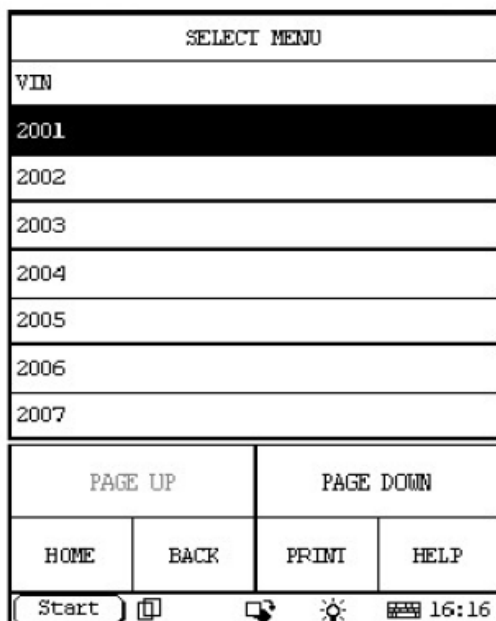
Now we take S60 2001 09452835 A (ECU Diagnostic Part Number) as an example to illustrate the operation:

Note: The highlight item in the figure indicates corresponding action.




1. step 1: S60



2. step 2: select year






3. step 3: select DDM

SELECT MENU			
UEM (Up electrical module)			
REM (Rear electrical module)			
DIM (Driver information module)			
PDM (Passenger door module)			
PSM (Power seat module)			
DDM (Driver door module)			
CCM (Climate control module)			
PHM (Phone module)			
PAGE UP		PAGE DOWN	
HOME	BACK	PRINT	HELP
Start			 16:16

4. step 4:

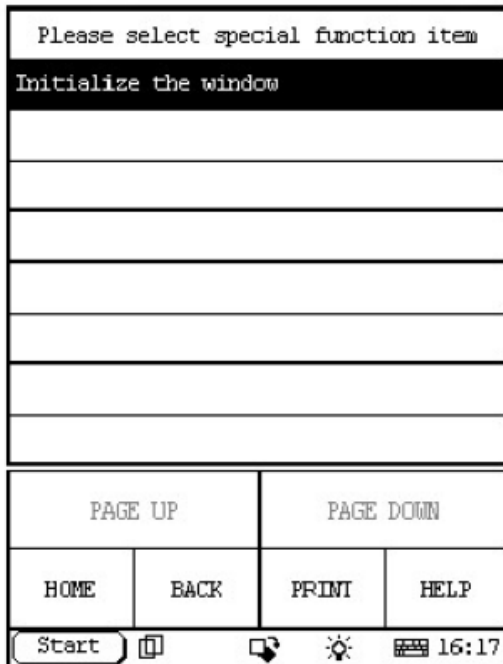
Select: Special Function.

If you can't find the Special Function menu, it means the function has not been developed on your vehicle. Please record the VIN (Vehicle Identification Number) and Version Information (can be read by X431 with the function: Reading off control module ID) and email to Launch (x431@cnlaunch.com). We may work out a solution on how to solve the problem.

Select function			
Reading off control module ID			
Reading off Diagnostic Trouble Codes			
Reading off extended diagnostic trouble code(DTC) information			
Erasing Diagnostic Trouble Codes			
Parameter display			
Activating components/functions			
Special Function			
PAGE UP		PAGE DOWN	
HOME	BACK	PRINT	HELP
Start			 16:17

5. step 5:

Select: Initialize the window



6. step 6:

The information of Initialize the window:

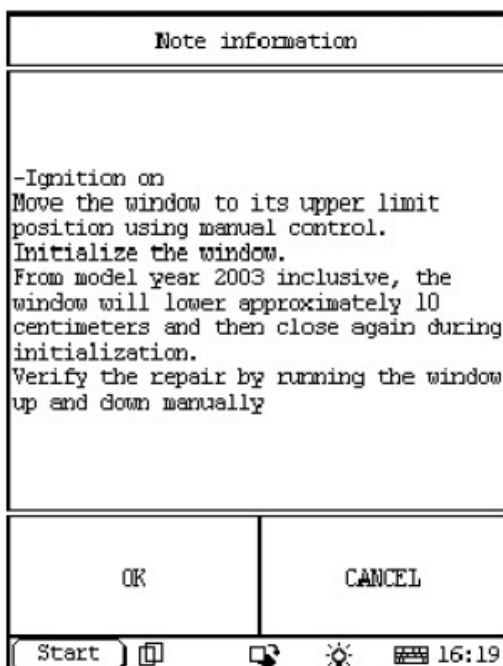
-Ignition on

Move the window to its upper limit position using manual control.

Initialize the window.




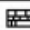
From model year 2003 inclusive, the window will lower approximately 10 centimeters and then close again during initialization.

Verify the repair by running the window up and down manually.



7. step 7:

Select Ok then it will send command to ECU, and display information like this:



ACTUATION TEST		
Driver Window	Not initialized	
Passenger Window	Initialized	
F1:Initiate driver window (DDM)		
F2:Initiate passenger window (PDM)		
PAGE UP	PAGE DOWN	PRINT
F1	F2	EXIT
Start     16:27		

The upper 2 lines in the screen display the initialization status of both driver window and passenger window,, if any window has not initialized, you can perform the function on it as necessary according to the list:

F1: Initiate driver window (DDM)



F2: Initiate passenger window (PDM)

For Example: if you want to initiate driver window (DDM), please select F1 and it will start programming. When programming finish, the Programmed Value will change to Initialized as the following figure, it means that the programming succeed.

ACTUATION TEST		
Driver Window	Initialized	
Passenger Window	Initialized	
F1:Initiate driver window (DDM)		
F2:Initiate passenger window (PDM)		
PAGE UP	PAGE DOWN	PRINT
F1	F2	EXIT
Start     16:35		

8. step 8:

When you want to exit this programming, please select EXIT:

ACTUATION TEST		
Driver Window	Initialized	
Passenger Window	Initialized	
F1:Initiate driver window (DDM)		
F2:Initiate passenger window (PDM)		
PAGE UP	PAGE DOWN	PRINT
F1	F2	EXIT
Start		 16:46

LAUNCH