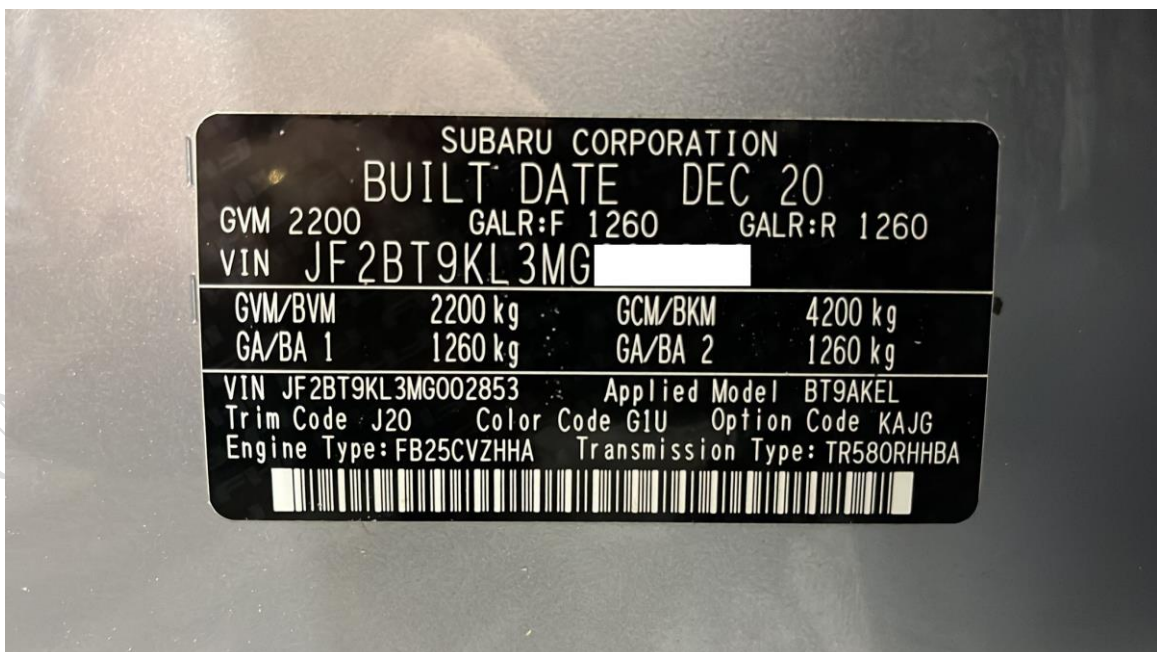


## Subaru Outback Parameter Selection

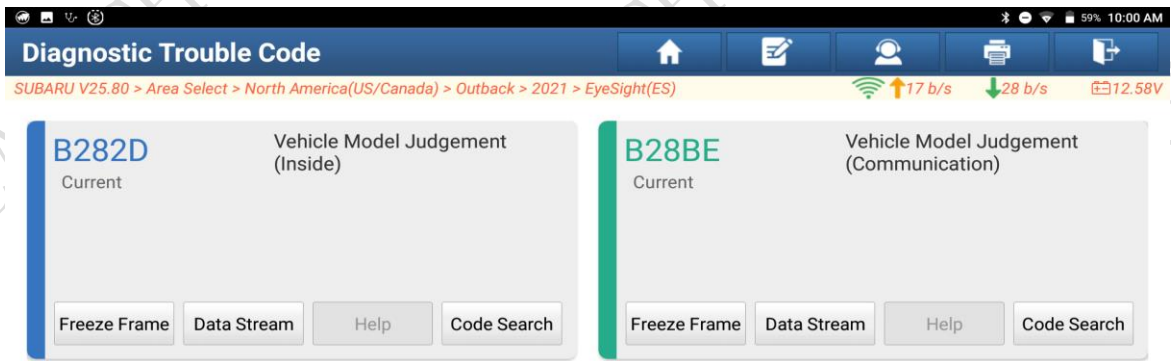
**Function description:** parameter selection

**Supported product:** Launch PRO or PAD series comprehensive diagnostic equipment

**Tested model:** Subaru Outback VIN: JF2BT9KL3MG\*\*\*\*\* (See the following figure)

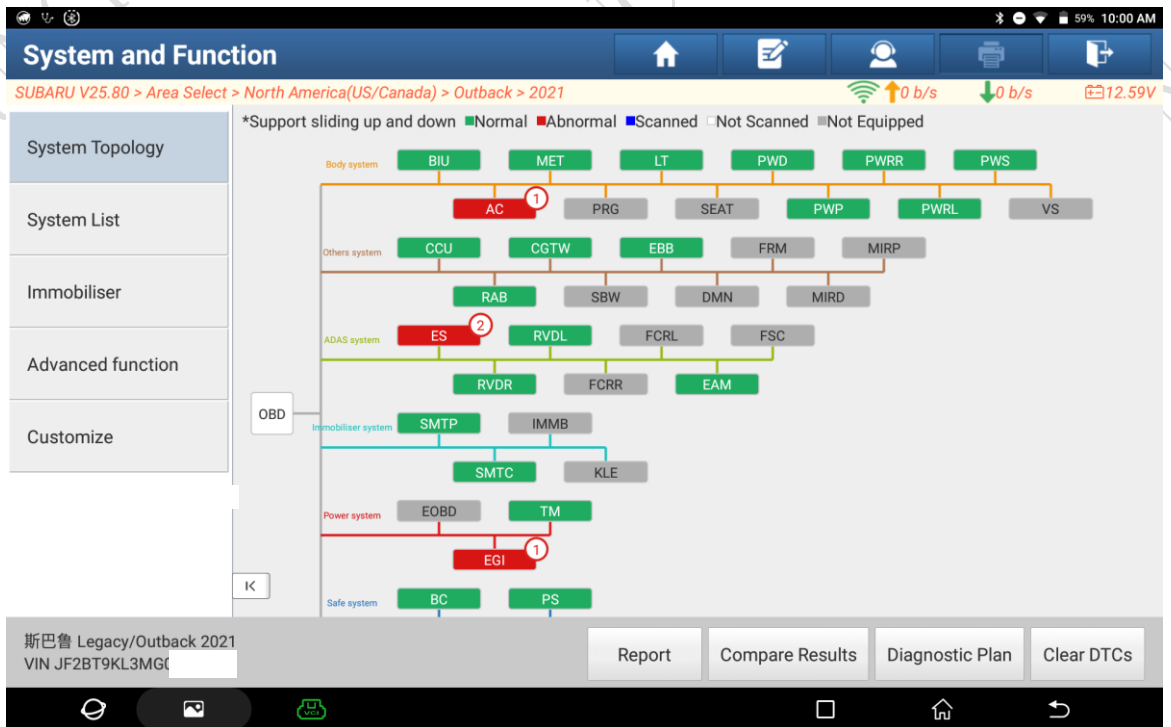


The system reads out the DTCs: B282D Vehicle Model Judgment (Inside), B28BE Vehicle Model Judgment (Communication). (See the following figure.)

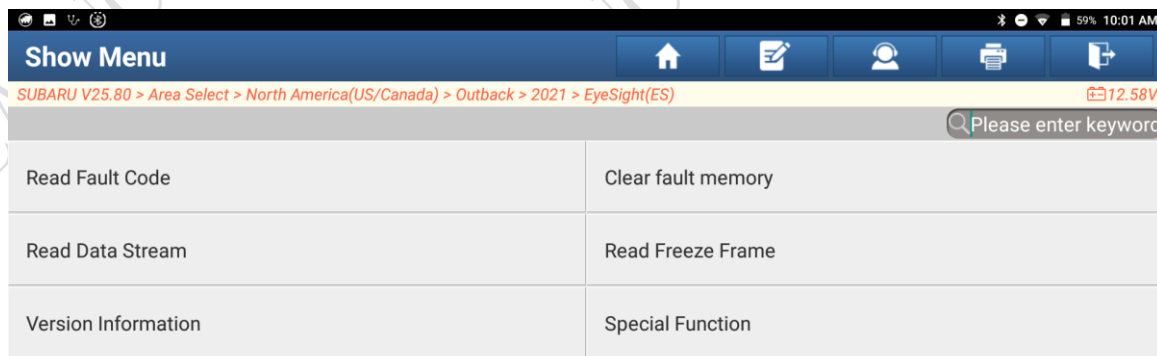


## Procedure:

1. Access the ES system. (See the following figure.)



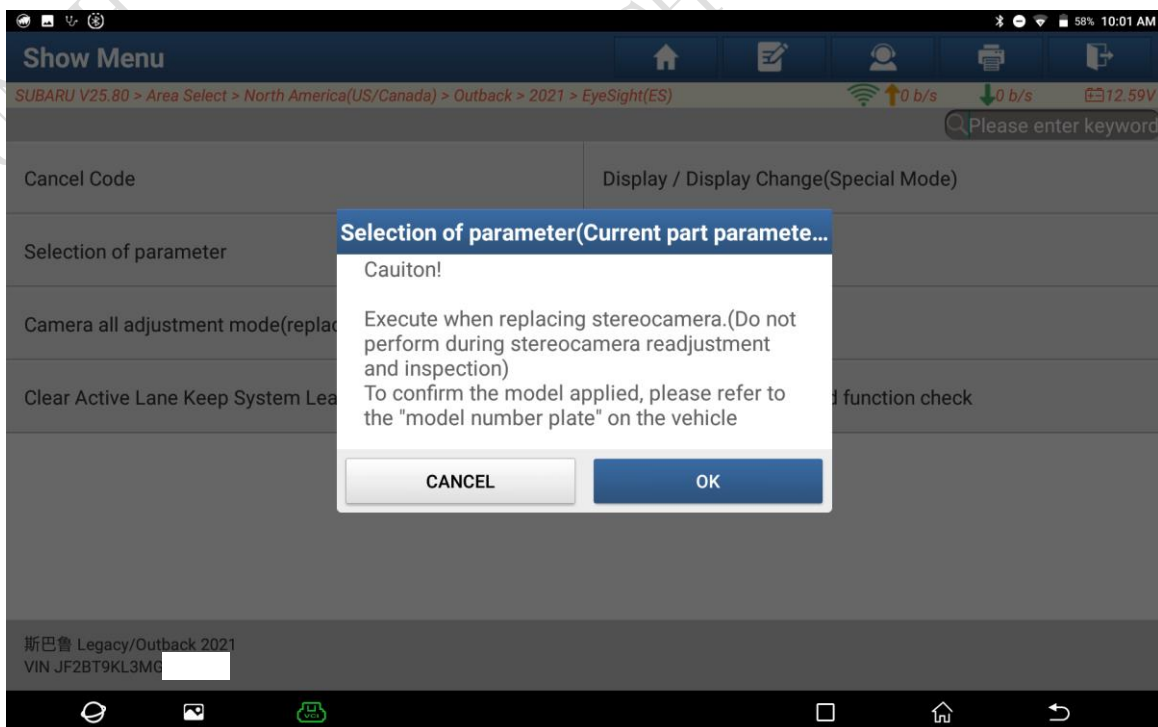
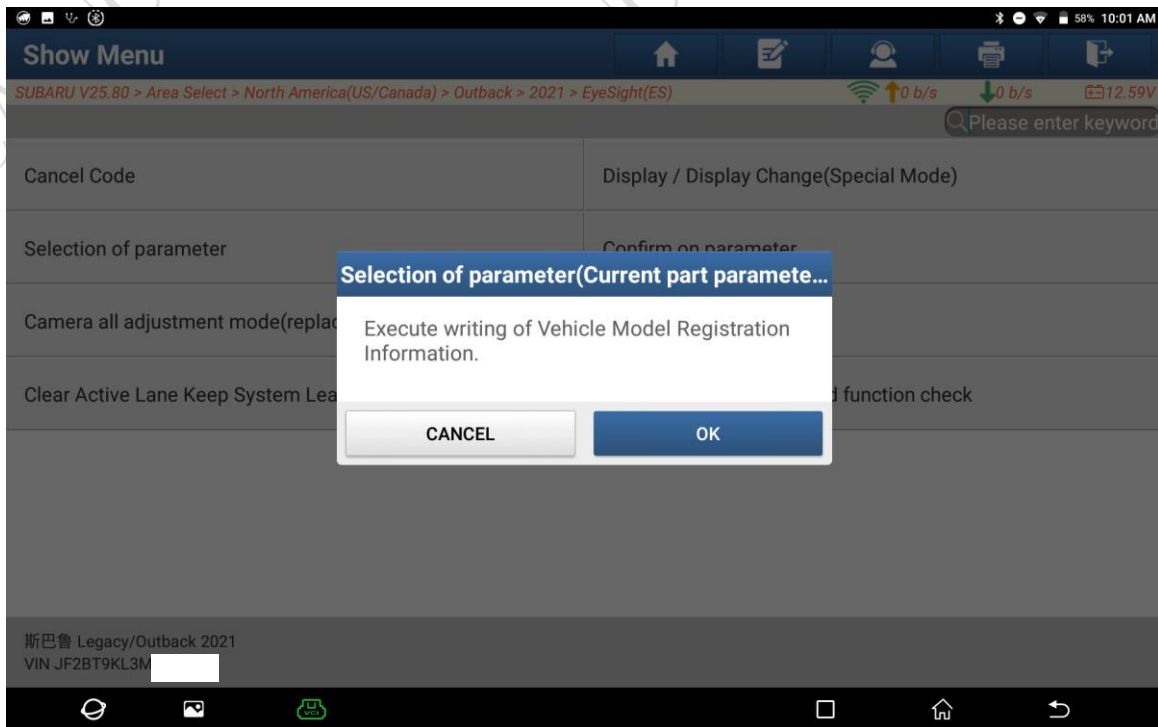
2. Choose [Special Function]. (See the following figure.)

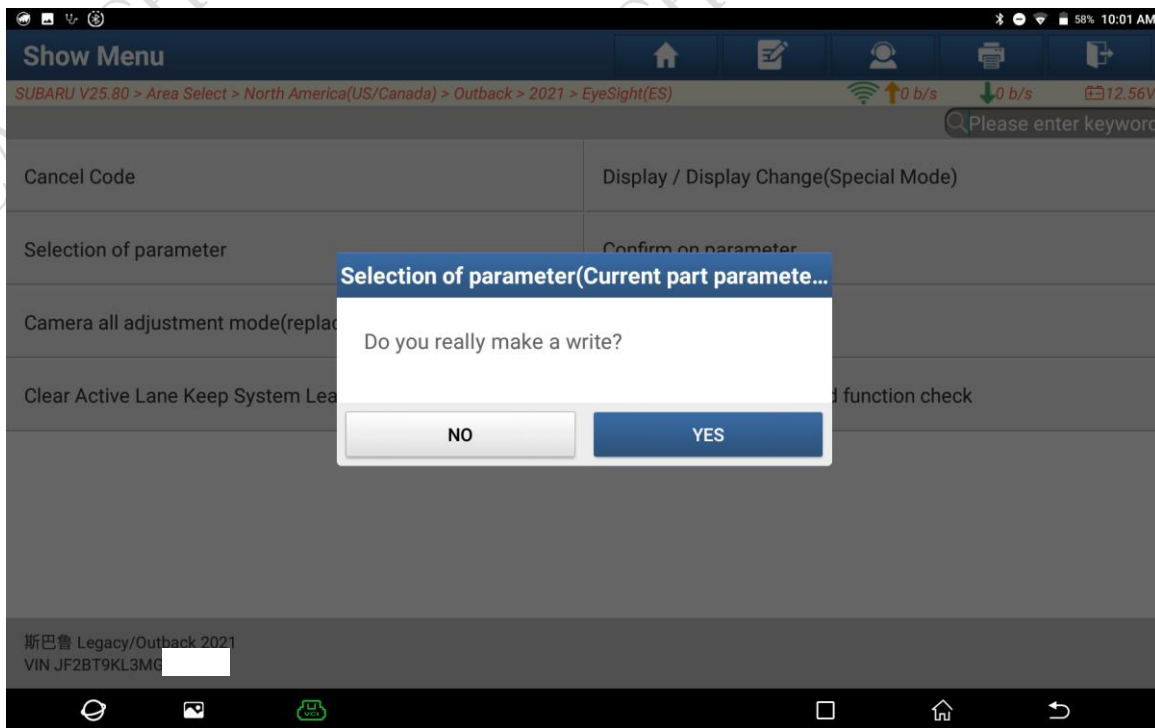


3. Choose [Selection of parameter]. (See the following figure.)

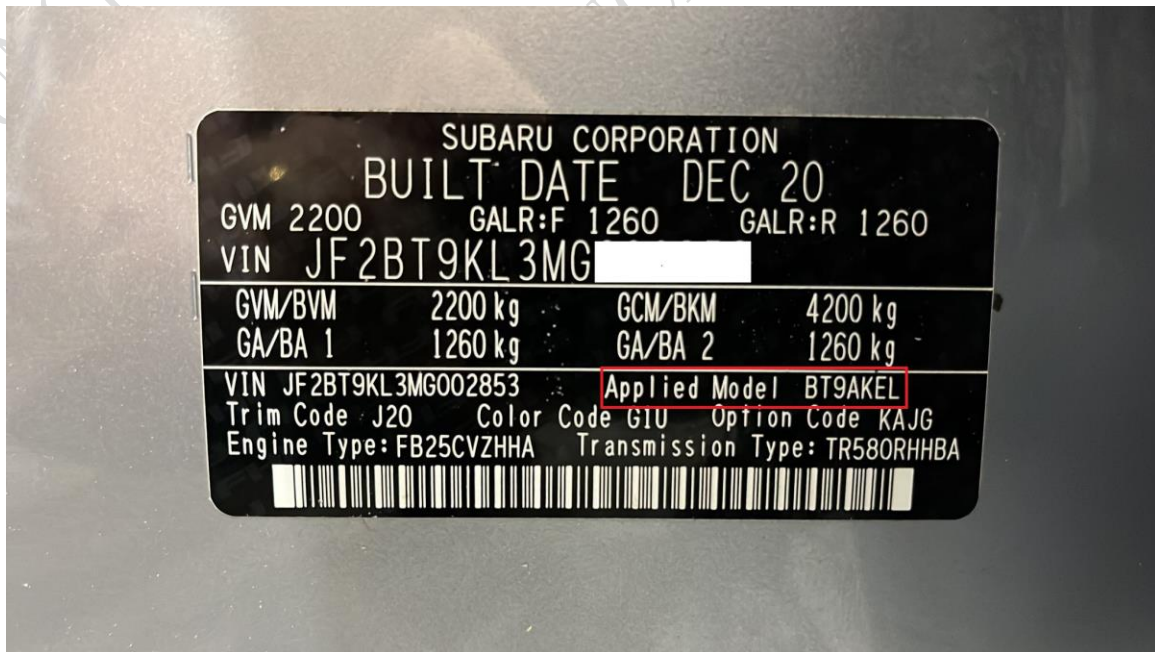


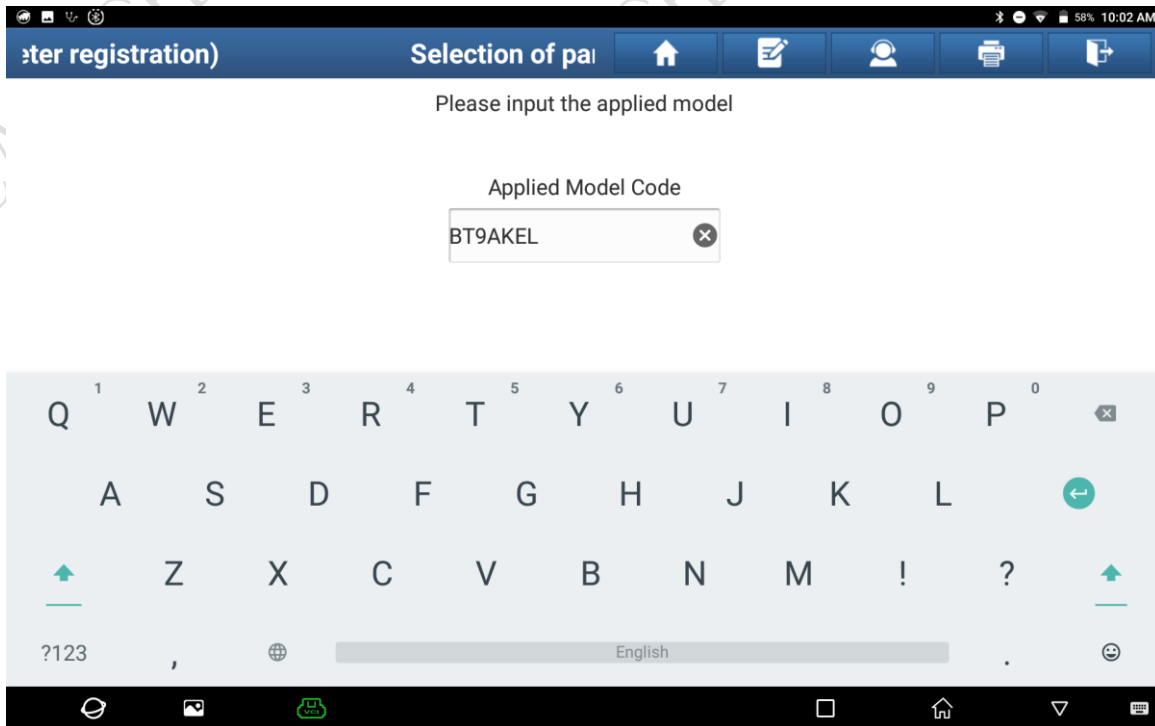
4. The following prompts will be displayed in sequence. (See the following figures.)



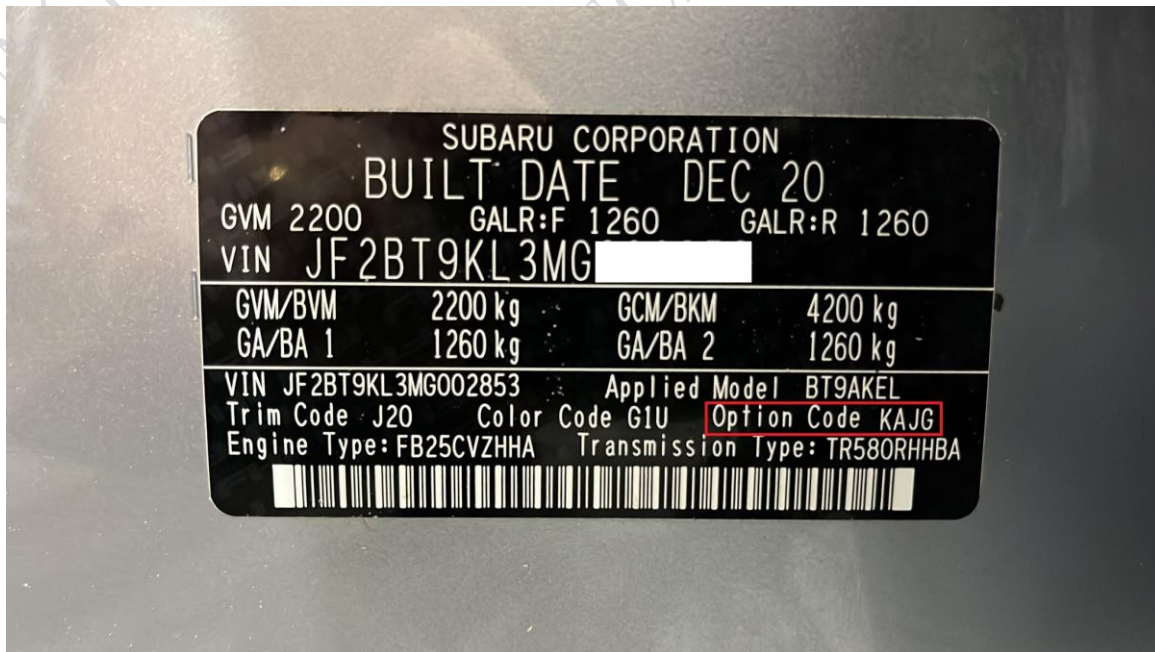


5. After selecting to start writing, enter the applied model code of the illustrated position. (See the following figures.)

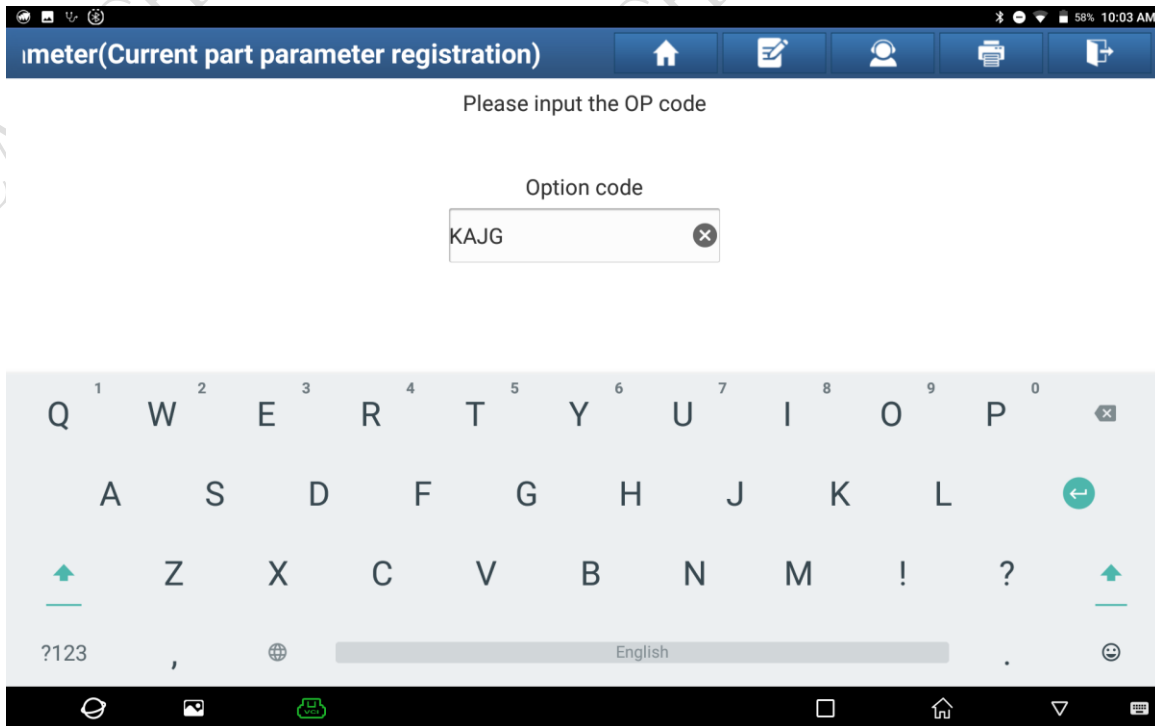




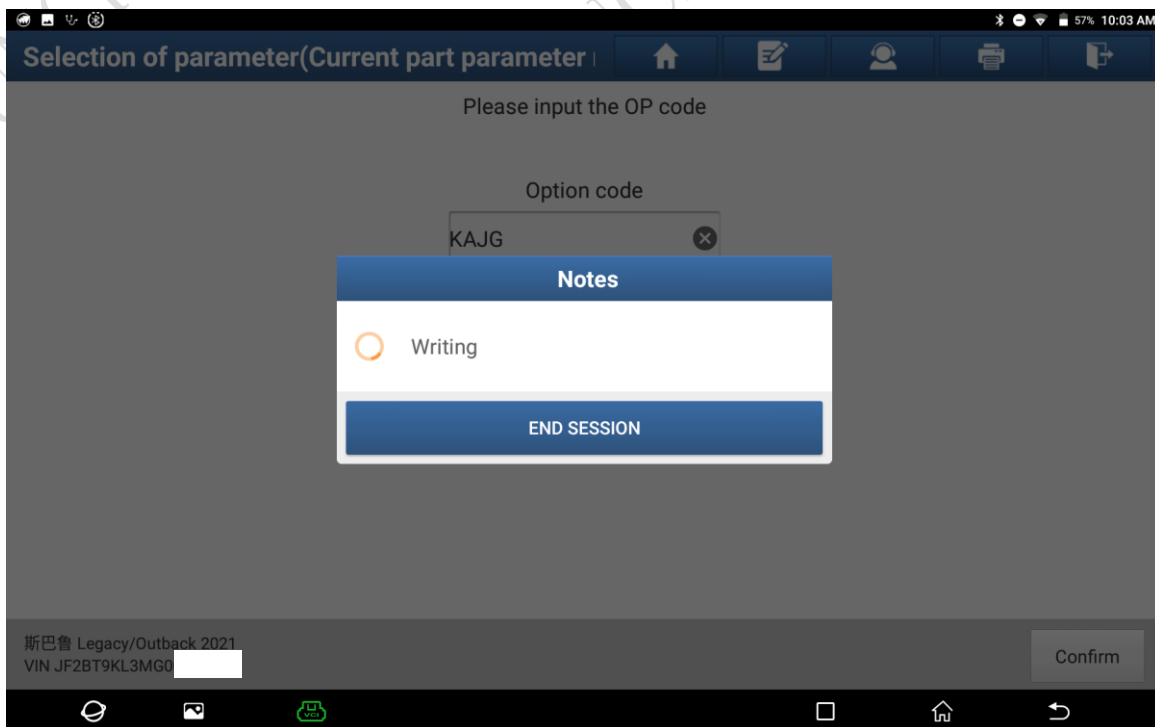
6. Continue to enter the option code of the illustrated position. (See the following figures.)



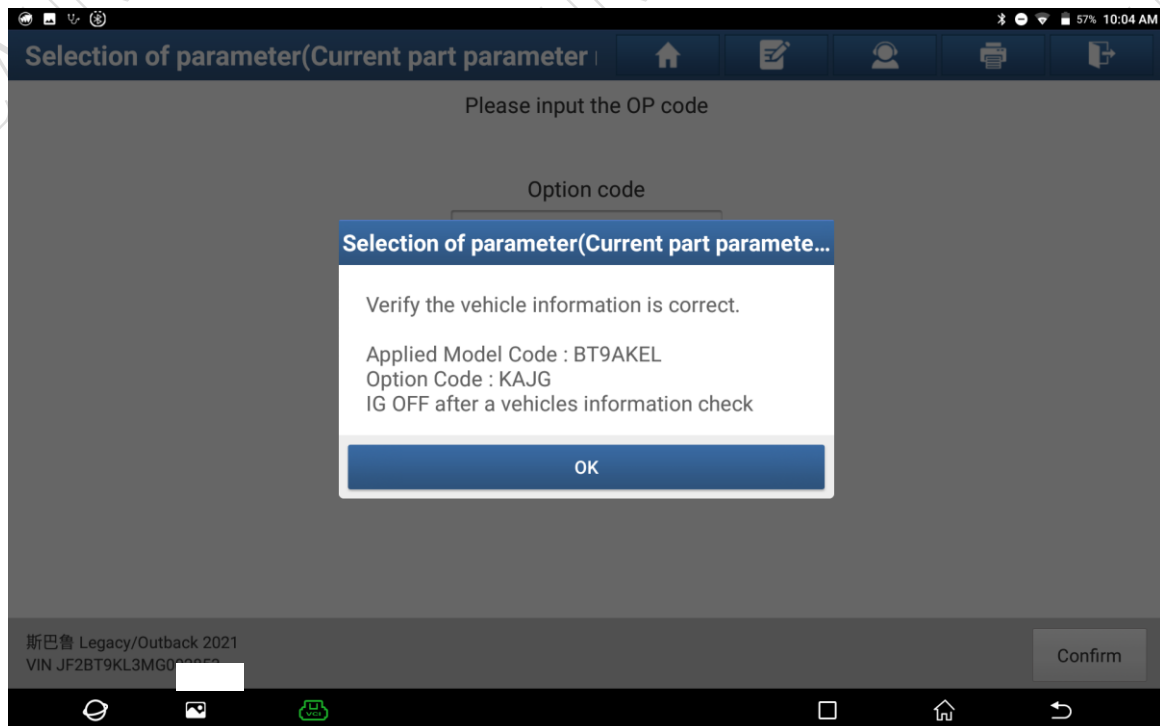




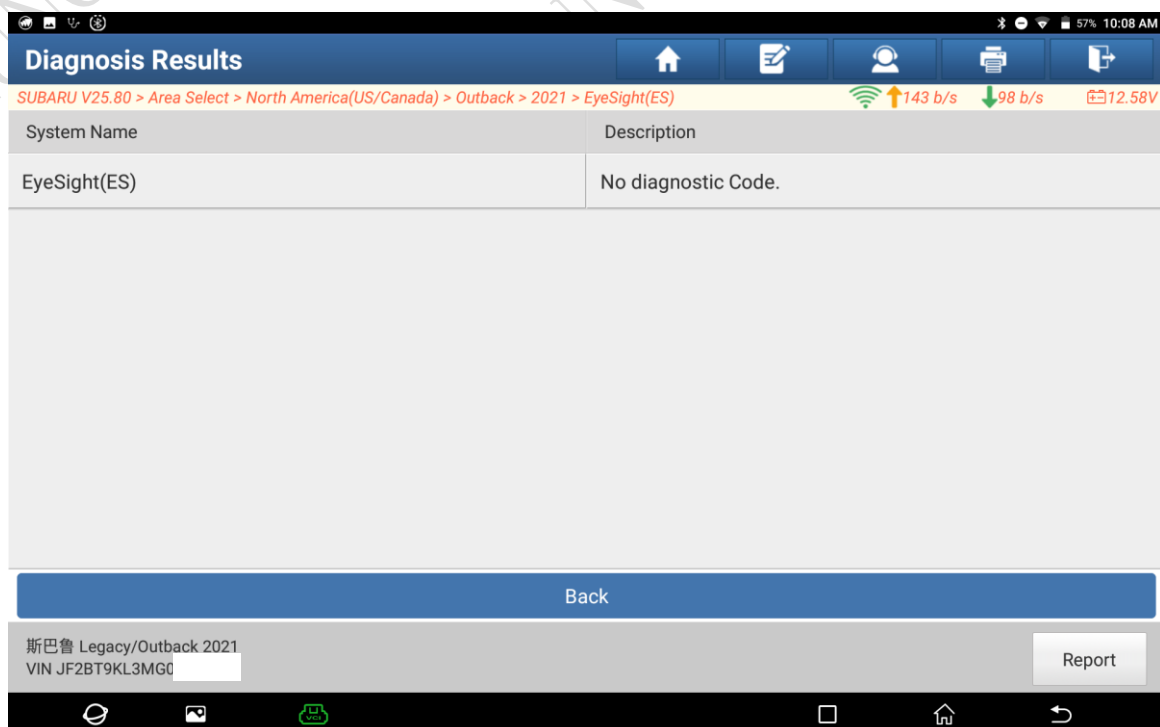
7. After entering, the registration information will be written. (See the following figure.)



8. After writing is completed, check whether they are consistent with those on the vehicle. (See the following figure.)



9. After the parameter selection is completed, clear the DTCs. Then, read the DTCs and there is no DTC found. (See the following figure.)



## Statement:

The content of this document is copyrighted by Shenzhen Launch Tech Co., Ltd., and no individual or organization may quote or reprint it without consent.