

Write VIN

Applicable Models: Some Hyundai Kia 2009 and later models that support VIN reading and writing

Function Description: This function is used to write the VIN of the vehicle into the ECU. Generally, after replacing the vehicle computer, it is necessary to rewrite the VIN.

Conditions:

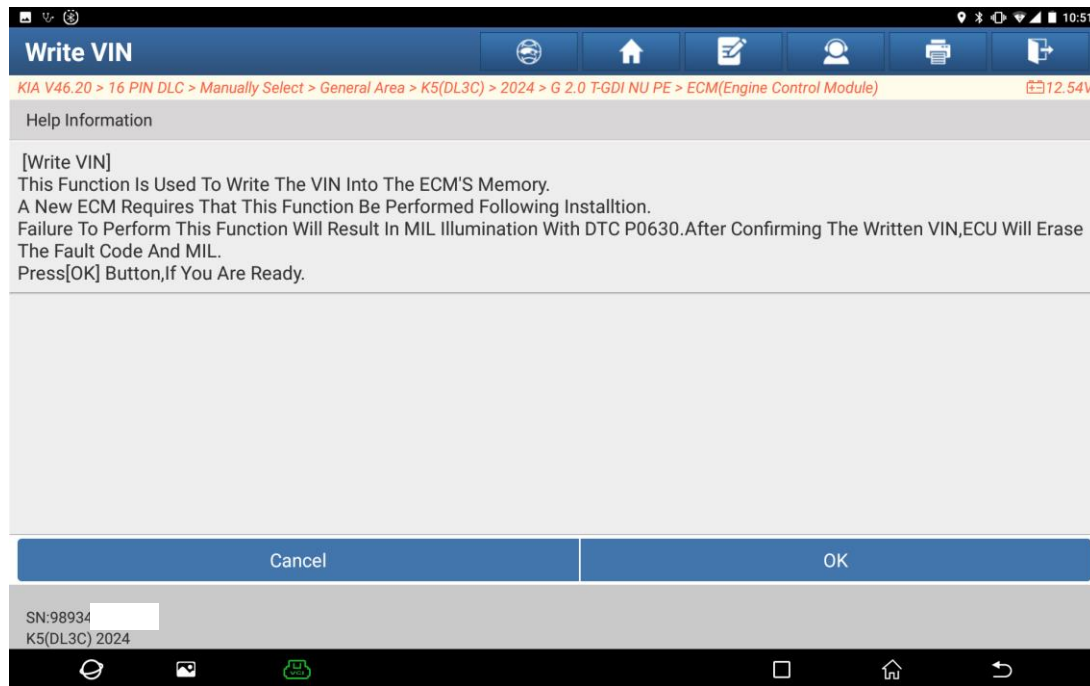
1. The VIN has not been written into the vehicle ECU.
2. Ignition switch ON and engine stopped

Procedure:

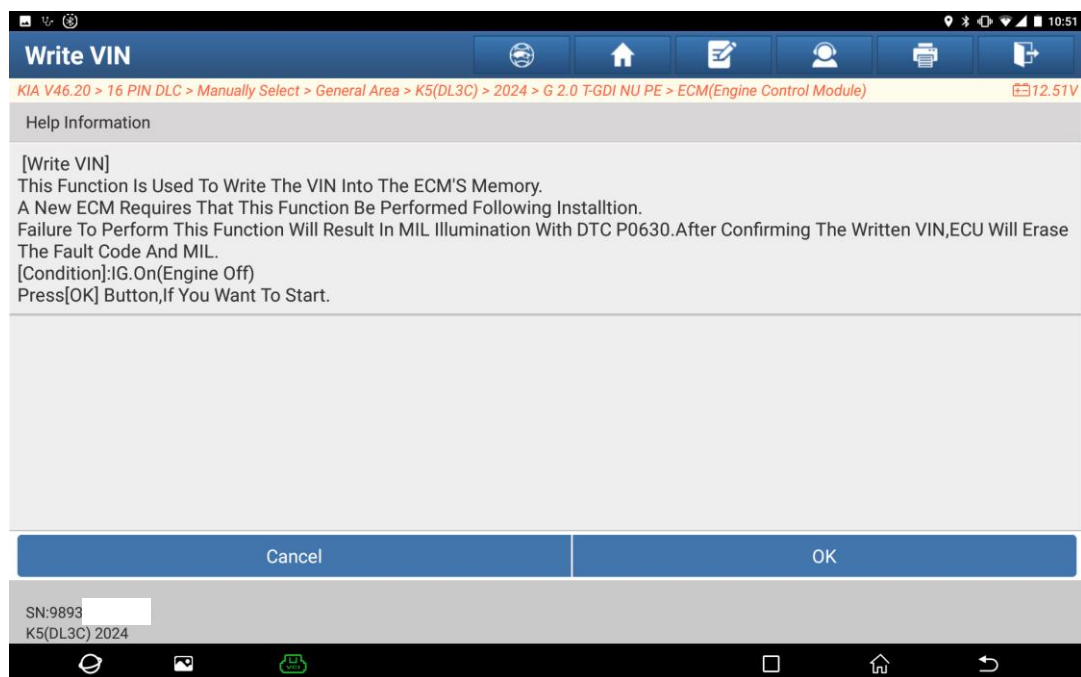
1. After entering the engine system, choose the special function [Write VIN].
See the following figure.



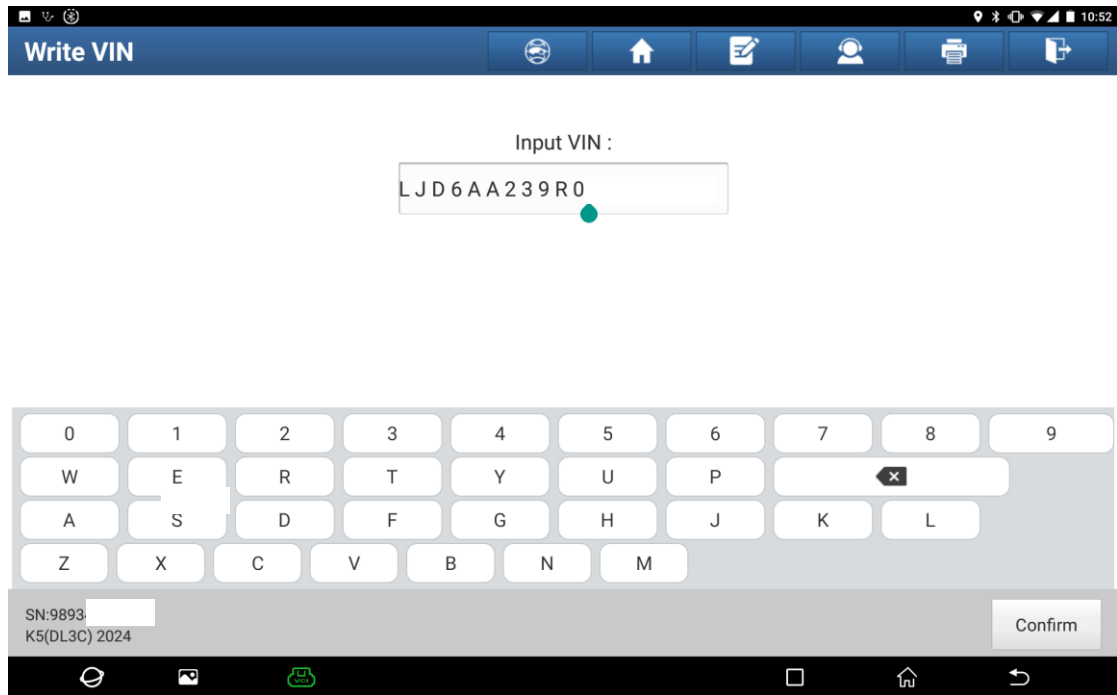
2. The program pops up a prompt message.



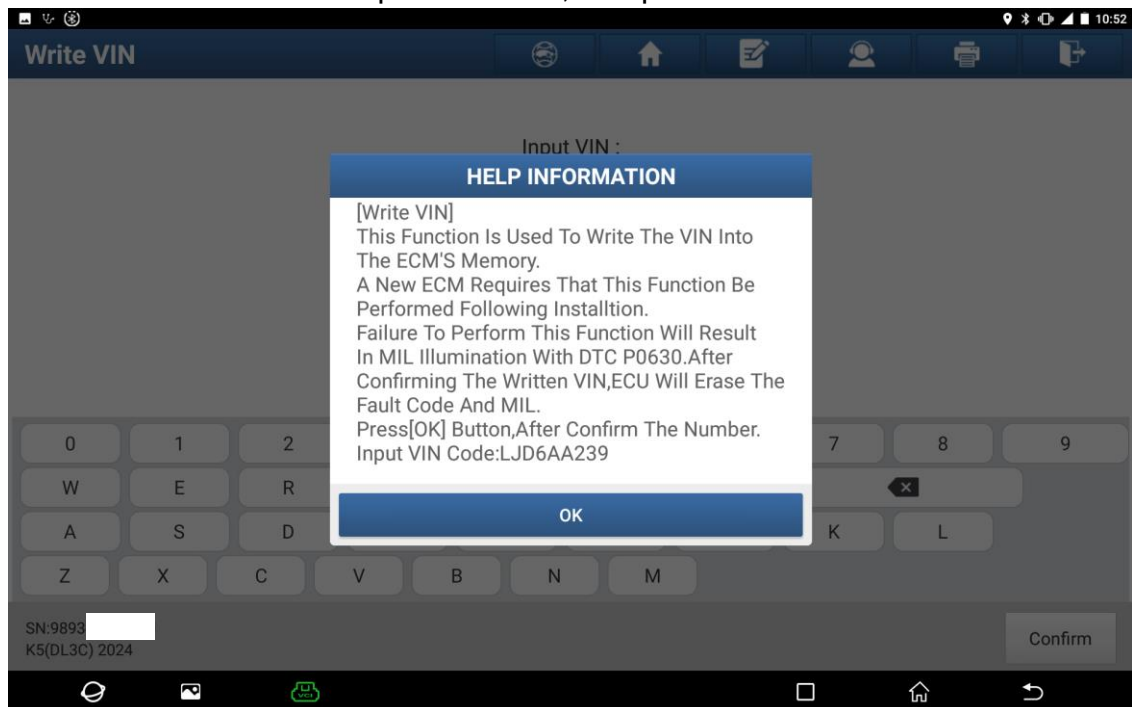
3. Press OK to continue. The function execution condition information will pop up.



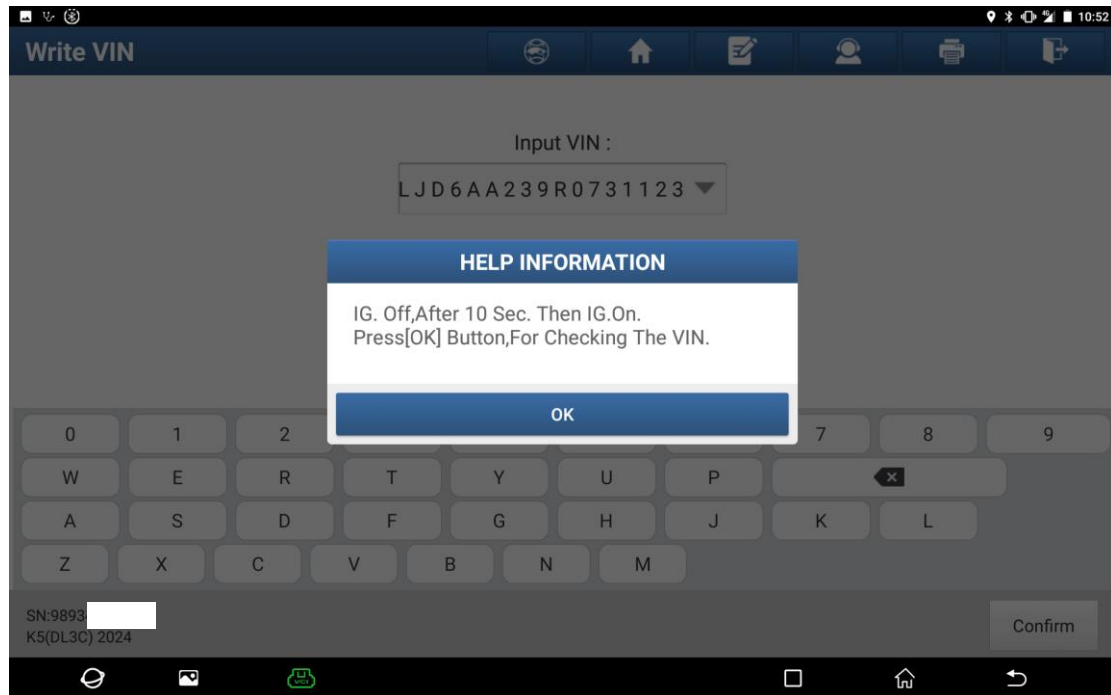
4. Enter the VIN to be written (repeatedly confirm that there is no input error, case insensitive).



5. Confirm whether the input is correct, and press OK to write.



6. After writing is completed, exit the system, turn off the ignition key, and wait for 10 seconds before turning it on again. Then, enter the engine system and use the [Read VIN] function to check whether the writing is successful.



Statement:

The content of this document is copyrighted by Shenzhen Launch Tech Co., Ltd., and no individual or organization may quote or reprint it without consent.