

Method for Modifying the Blinking Times of Turn Signals for 2011 Mercedes-Benz C200

Function description: Method for modifying the blinking times of turn signals for 2011 Mercedes-Benz C200.

Supported products: Launch's full range of comprehensive diagnostic equipment

Tested model: 2011 Mercedes-Benz C200





Procedure:

1. Enter the diagnostic software with X-431 PAD 5 and choose [Driver-side SAM - Front Signal Acquisition And Actuation Module].

System	Status	Action
Topology	Driver-side SAM - Front Signal Acquisition And Actuation Module	Normal Enter
System List	CGW[ZGW] - Central Gateway	Normal Enter
Control module programming	SG-SOGE-AGA - Sound Generator For Exhaust system(N12)	Not Equipped Enter
Anti-theft Function	FSCU - Control Unit'Fuel pump'(N118)	Not Equipped Enter
Special Function	FSCU - Left Fuel pump(N118/3)	Not Equipped Enter
Setting/Changeover	FSCU - Right Fuel pump(N118/4)	Not Equipped Enter
Replace The Used Airbag ECU	ISM - Shift module(A80)	Not Equipped Enter
	ECM - Engine Control Module(ME)	Not Equipped Enter

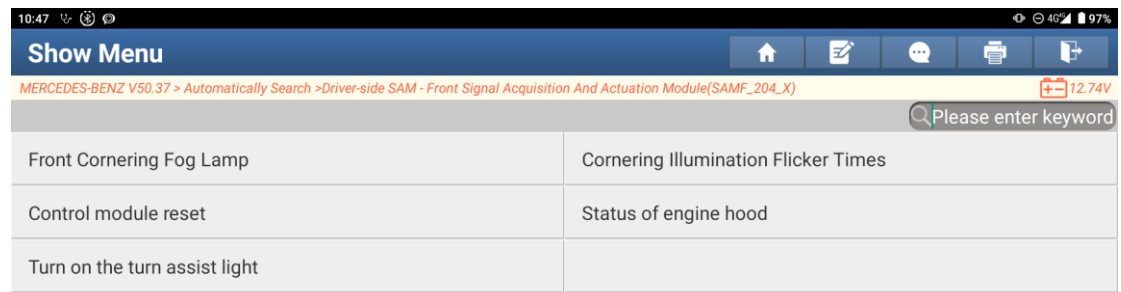
SN: 98934
 Mercedes-Benz C 200 CGI 2010
 VIN LE4GF4JB3BL132

Report Compare Results Diagnostic Plan Clear DTCs

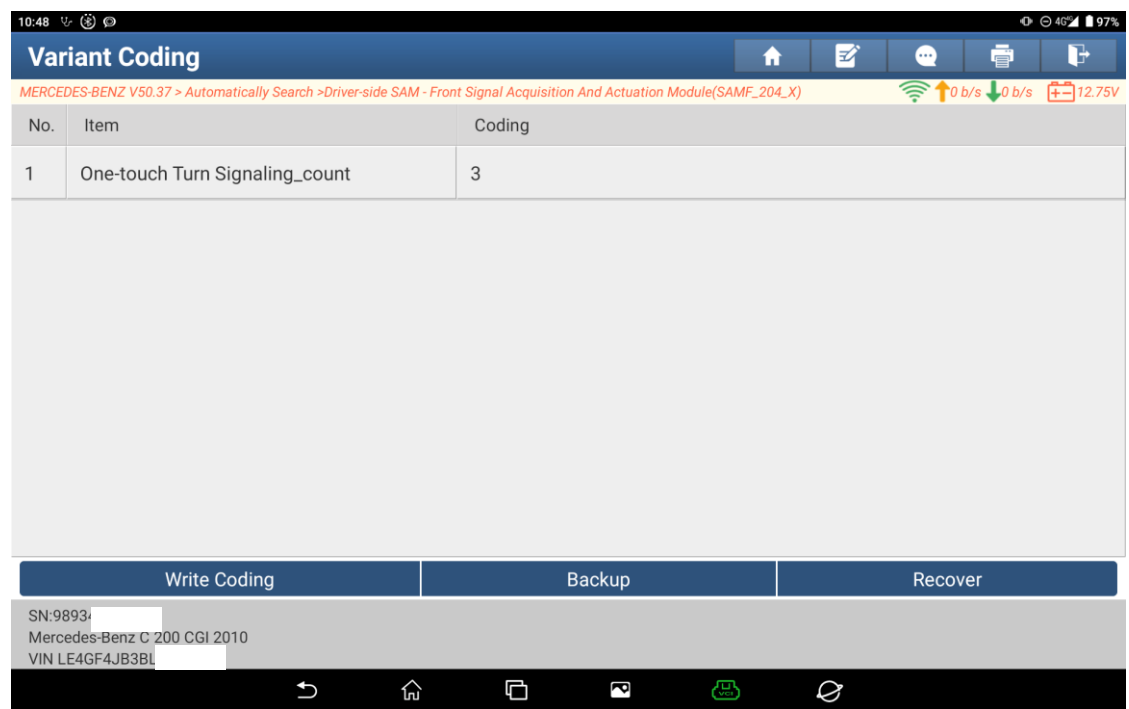
2. Click [Setting/Changeover].



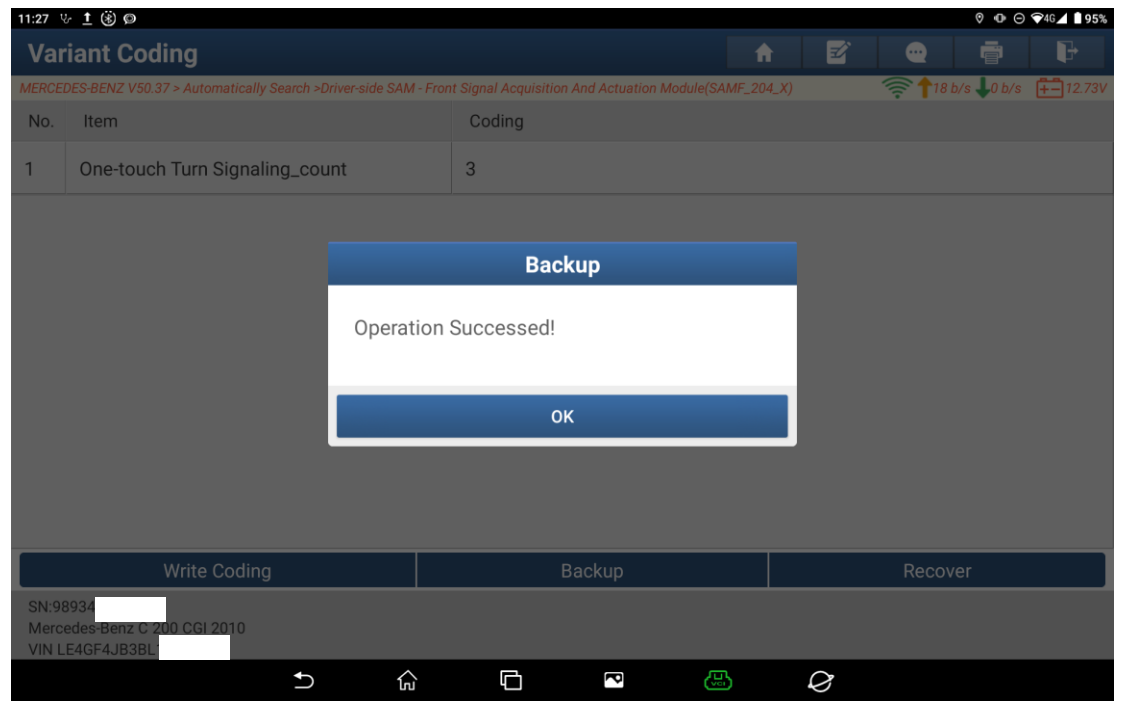
3. Choose [Cornering Illumination Flicker Times].



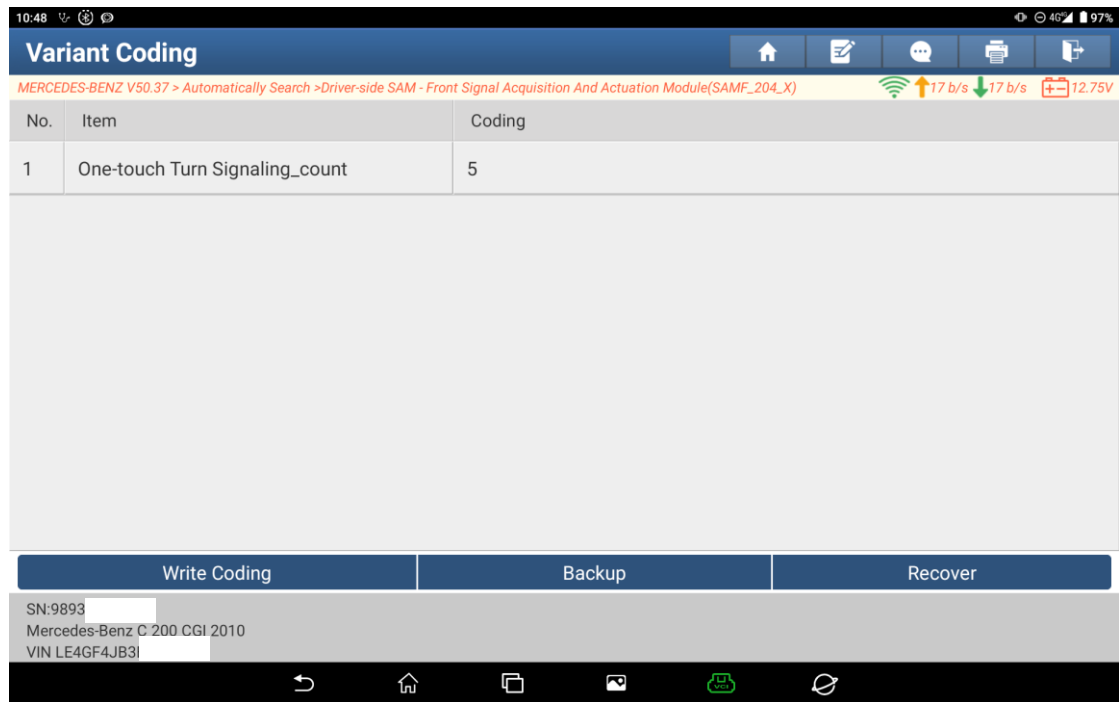
4. The original factory setting for the blinking times is [3]. Click [Backup] before modification.



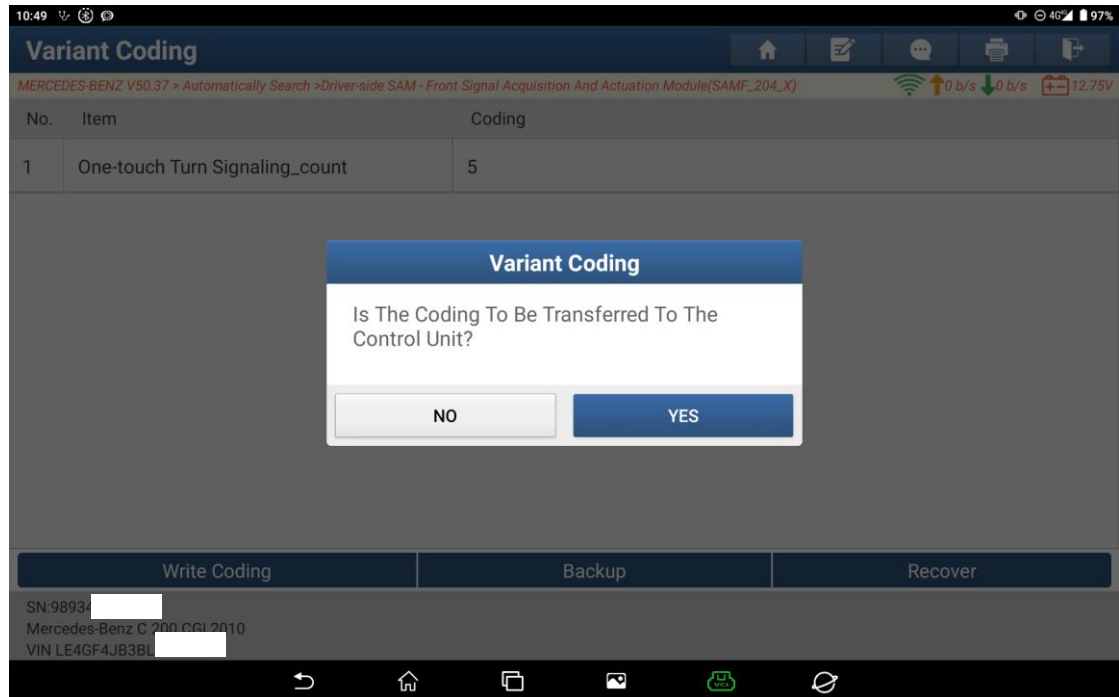
5. The backup is completed.



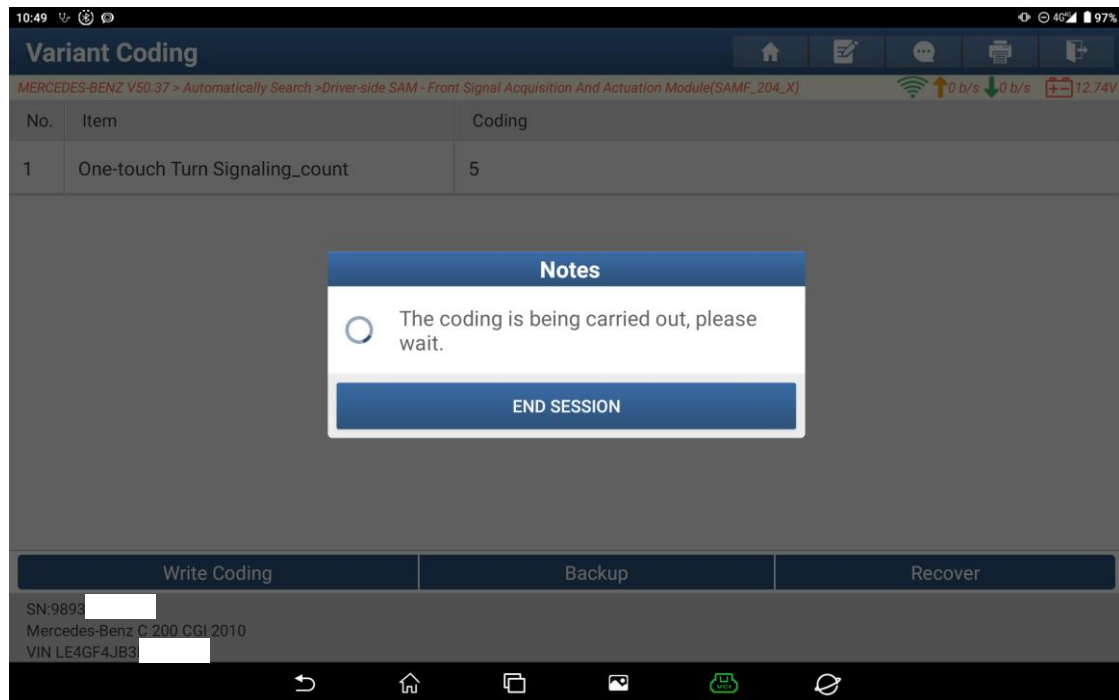
6. Modify the blinking times to [5] and click [Write Coding].



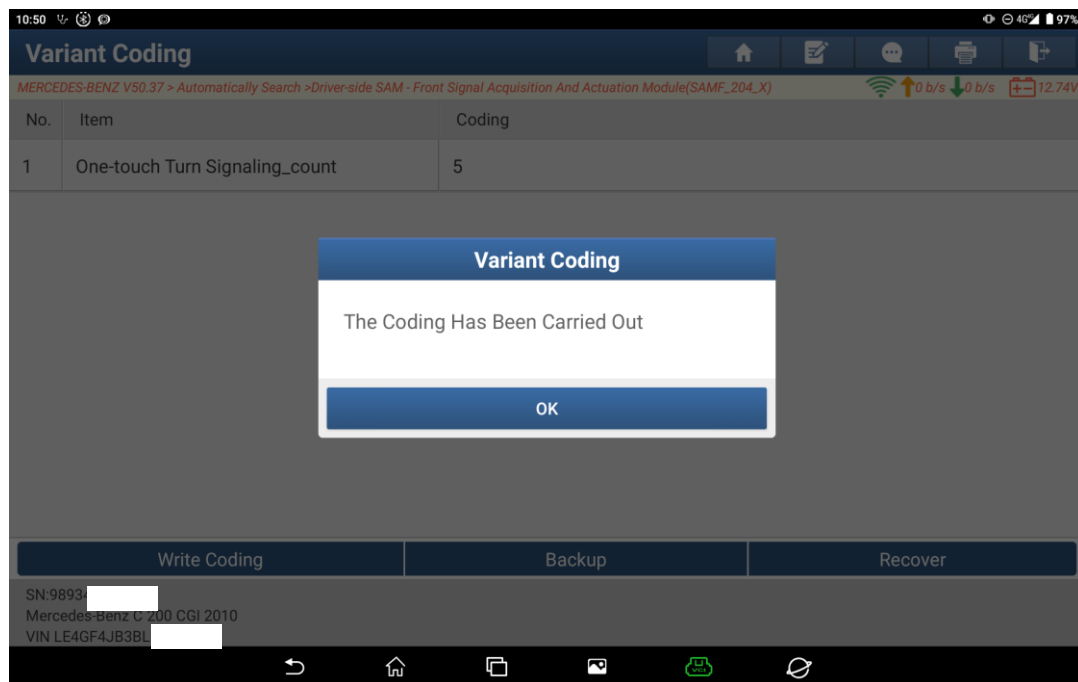
7. Click [YES].



8. Modifying...



9. The modification is completed. Click OK. Now, when the turn signal stalk is lightly toggled, the turn signals blink for 5 times.



Statement:

The content of this document is copyrighted by LAUNCH TECH CO., LTD., and no individual or organization may quote or reprint it without consent.